

# SAYRE AREA SCHOOL DISTRICT TECHNOLOGY TIPS

## SKYWARD STUDENT MANAGEMENT (OFFICE STAFF)

### UPGRADE TO VERSION 2.0

#### Purpose

To give an overview of the Skyward Upgrade to Version 2.0 for Student Management users (office staff) and its new features and new look.

The go live date for SASD is February 15<sup>th</sup>, 2012.

#### PLEASE NOTE:

Skyward will be updated starting at 2:30pm EST on February 15 and will not be available until 5:00pm EST.

#### Recorded Skyward Webinar on the New Features of Version 2.0

The following link will take you to a recorded Skyward Webinar on the New Features of Version 2.0.

[https://support.skyward.com/deptdocs/Corporate/Documentation/Public%20Website/Tutorials/Software/PW/SMS20-Overview\\_1575049\\_100\\_T.html](https://support.skyward.com/deptdocs/Corporate/Documentation/Public%20Website/Tutorials/Software/PW/SMS20-Overview_1575049_100_T.html)

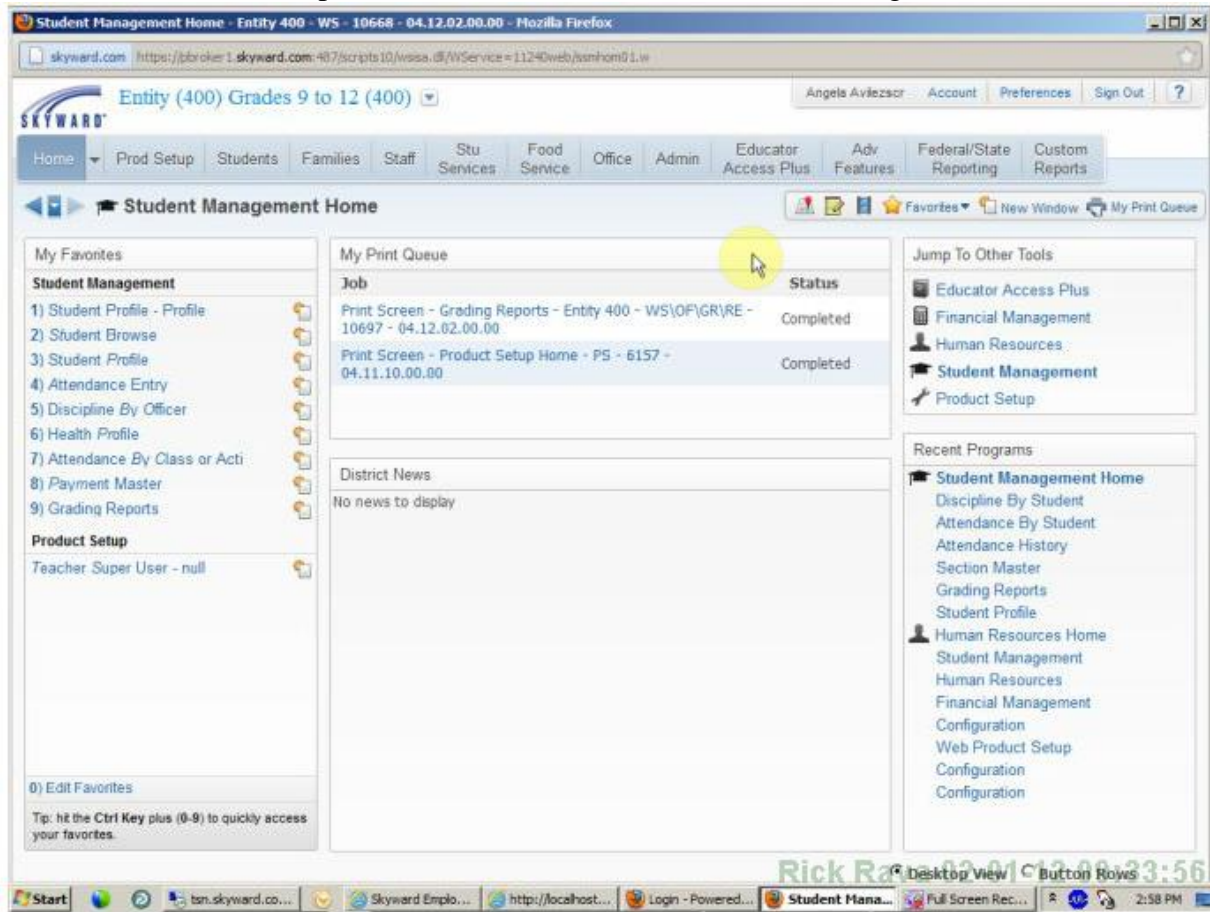
#### What is Changing for Office Staff?

- Course Re-Enrollment Options have been added to the General Configuration Entry/Withdrawal Settings screen.
- A Default Family/Student Access Lesson Plan Layout has been added.
- A viewable District Calendar has been created for Skyport, allowing the general public to view events.
- Educator Access Plus has a new design to comply with the Web 2.0 standards.
- The My Conference Scheduler link has been added to Teacher Access as well as Calendar View, allowing teachers to schedule their own parent-teacher conferences.
- Teachers now have the capability to modify Curriculum Maps in Educator Access Plus.
- The Message Center now allows staff to format messages, including hyperlinks.
- Teachers can now print an Academic Standard Trend Report when scoring Academic Standards on Assignments.
- The Lesson Scheduler has several new enhancements.

- Student Busing can be viewed in Educator Access Plus.
  - Student RtI information can now be displayed within Family Access.
  - Family and Student Access now have the same color scheme as Web 2.0.
  - BMI and BMI Percentile can now be viewed from the Health Information Physical tab in Family Access.
  - Family and Student Access users can now see Lesson Plans.
  - Parents can now sign up in Family Access to attend Parent/Teacher Conferences.
  - District Calendar screens have been created under Advanced Features for maintaining Calendar and Activity Events, as well as Field Trips.
  - A Past Due Unscored Assignments chart has been added.
  - An option has been added to turn off Family and Student Access for all entities in the district.
  - Separate viewing options have been added for displaying Special Education in Family Access.
  - A new Items Purchased in EA+ report has been added.
  - The Class Roster template now allows selection of a teacher and his/her classes.
  - Several changes have been made to the Discipline Graph.
- 
- A new User-Defined Discipline Report has been added.
  - A Course Requirements area has been added, which restricts who signs up for courses based on specified criteria.
  - Interactive Master Builder can now be run from the Interactive Scheduling Board.
  - A new option has been added to auto-schedule courses using the Special Education Course Type flag.
  - A new Medication Administration by Date report has been added.
  - Office Visits by Date and Office Visits by Student reports have been added to Health Records.
  - An Intervention Result Analysis Graph has been added to Response to Intervention.
  - Custom Forms can now be linked to RtI Areas and Interventions.
  - Separate viewing options have been added for displaying Special Education information in Student Information/Student Services.
  - Existing Special Education Forms can now be viewed while adding or editing another form.
  - The capability to toggle between previously-added Special Education forms from the Forms Editor is available.
  - Portfolio Attachments and Highlights are now available in Data Mining.
  - Discipline Graphs have been added to the Quick Print button on the Discipline tab.
  - A Pick Up field has been added to the Emergency Contact record.
  - A Class Profile feature has been added to the sections within the Course Master.
  - Changes made from the Special Education tab can now be tracked and viewed.
  - A Team Meeting Calendar has been added to the Team Members tab within Special Education. In addition, the capability to email all attendees of a scheduled meeting automatically when it is created, modified, or deleted is also available.
  - BETA: Secondary Gradebook has an option to allow teachers to grade multiple classes in a single, shared gradebook.
  - An option has been added to allow districts to dictate how the SMS 2.0 Desktop will display.
  - A footer has been added to the bottom of emails that are sent through the system, to assist in identifying the origin of emails.

# Sample Main Screen for Office Staff

Course Re-Enrollment Options have been added to the General Configuration



The biggest visual change is the removal of the image buttons

Most of the changes that have occurred reduce the number of clicks to get to the Skyward feature that you use the most!

You can go to the old view if needed by clicking on the Button Rows (bottom right hand screen).

