

REMOTE ACCESS HELP WITH DESKTOP AUTHORITY

Purpose

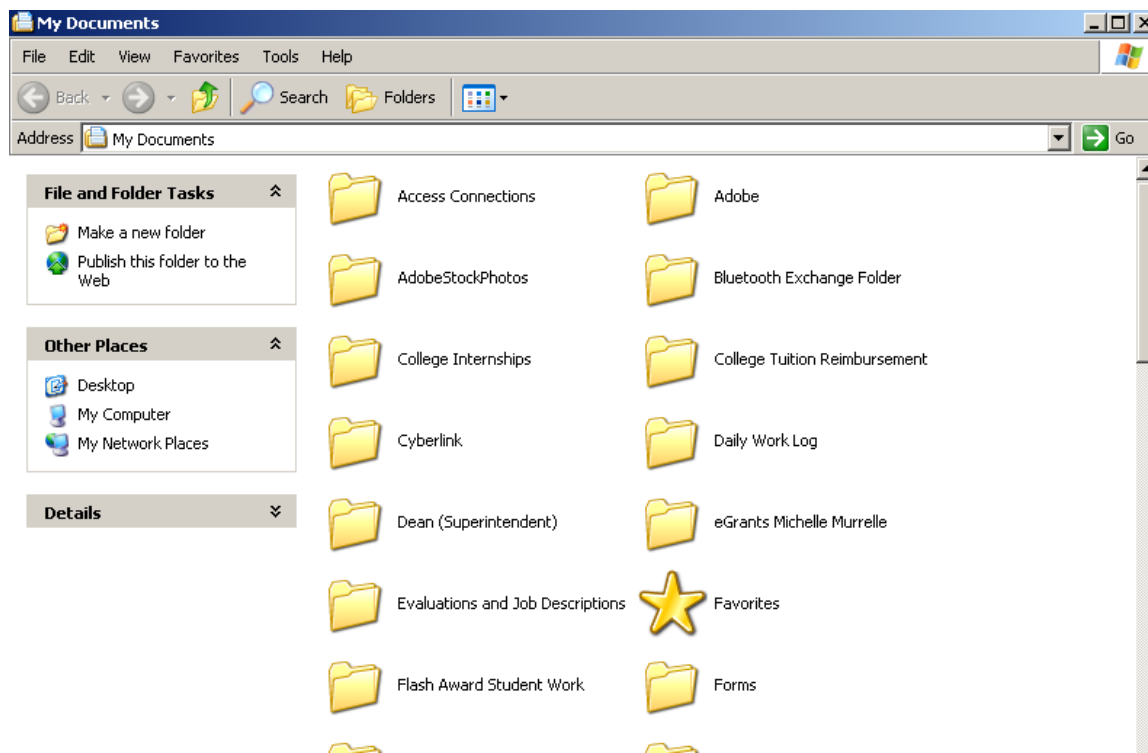
- To ensure that all of your work created in the Numonics PI-1500 Virtual Whiteboard is saved to your network drive (this ensures that your work is backed up and can be accessed from any computer)
- Please note that you only need to do this procedure once – unless your computer is re-imaged!

Create a Folder for Your Work on Your Network Drive

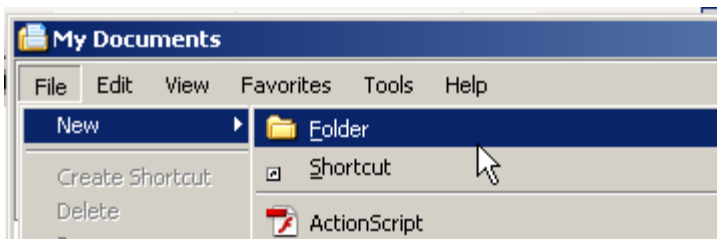


Double-click My Documents

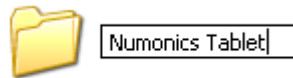
See the following sample



Click on File → New → Folder



Type in Numonics Tablet



Now you have a folder to save all of your Numonics Tablet work!

Setting Your Default File Location for Numonics Virtual WhiteBoard

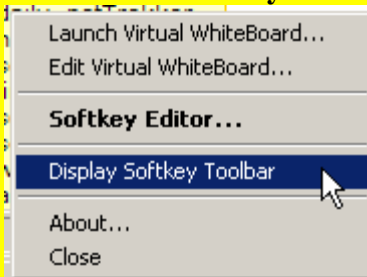
Once you start up your PC – you will see the following toolbar on your screen



This will automatically start up when you turn your PC on

Please Note – if you do not see the Softkey Toolbar – just click on the Softkey icon and

choose show Softkey

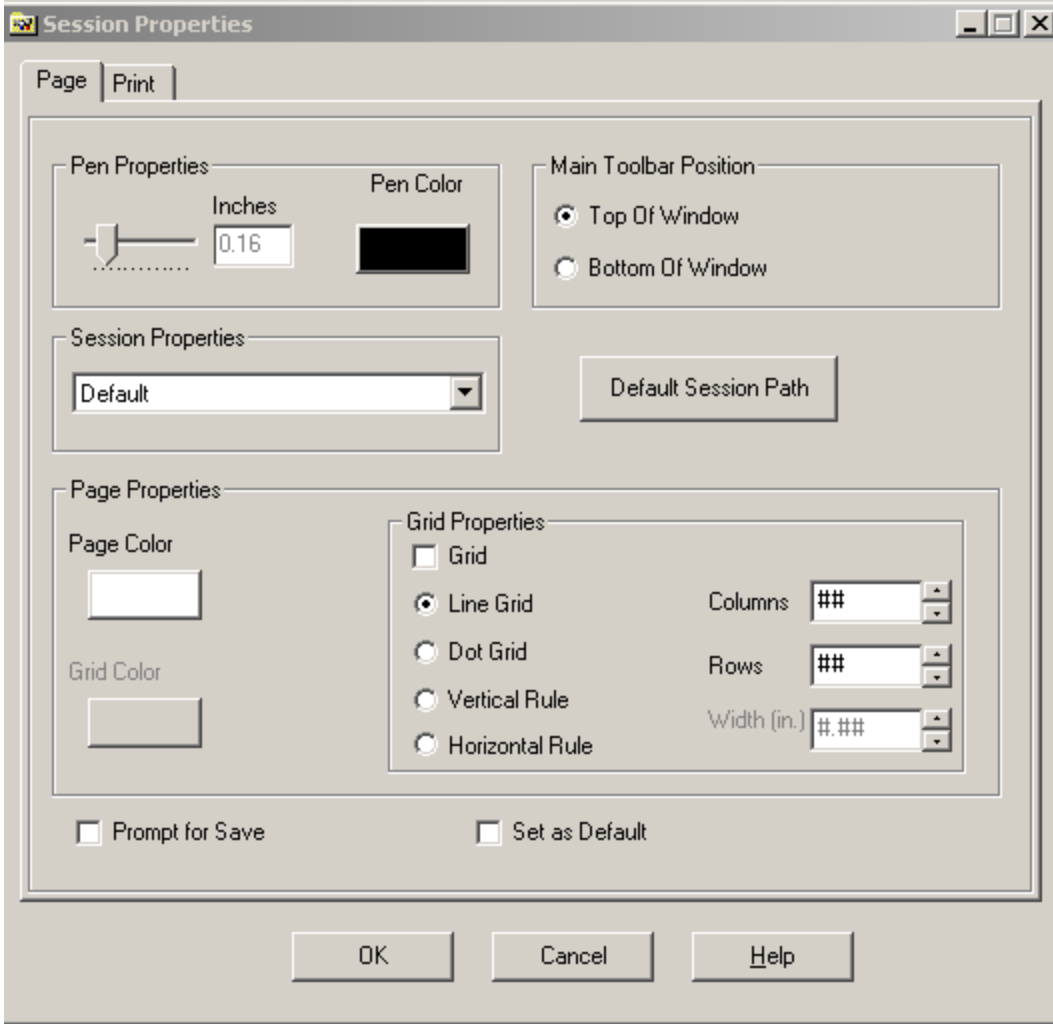


Now just click on **Launch Virtual Whiteboard** icon on your Softkey Toolbar

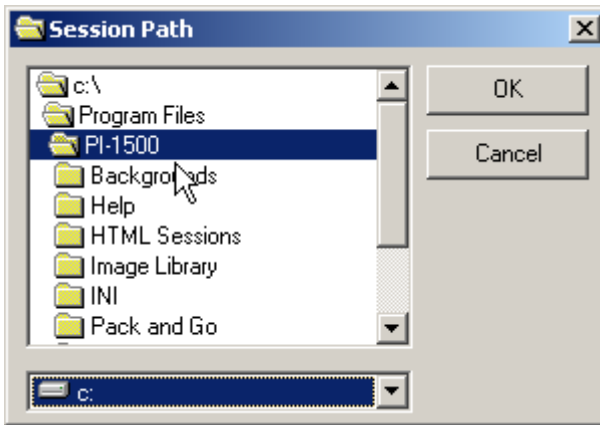




Click on the Format menu → Options

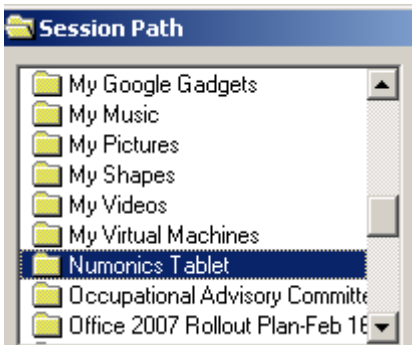
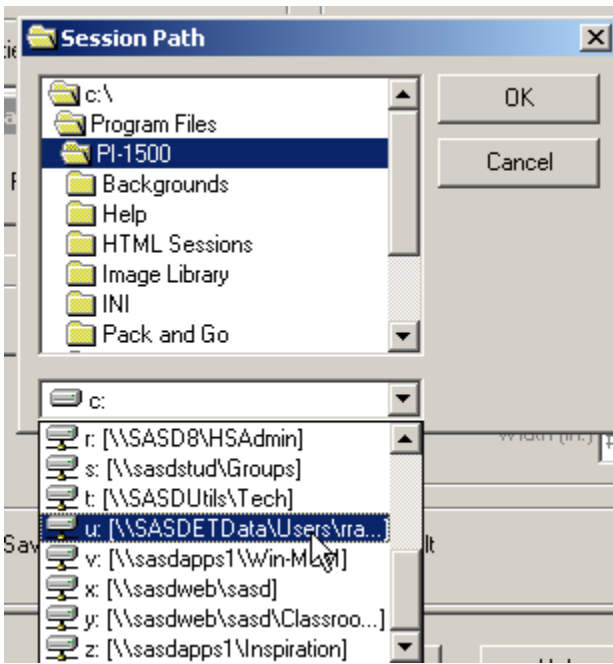


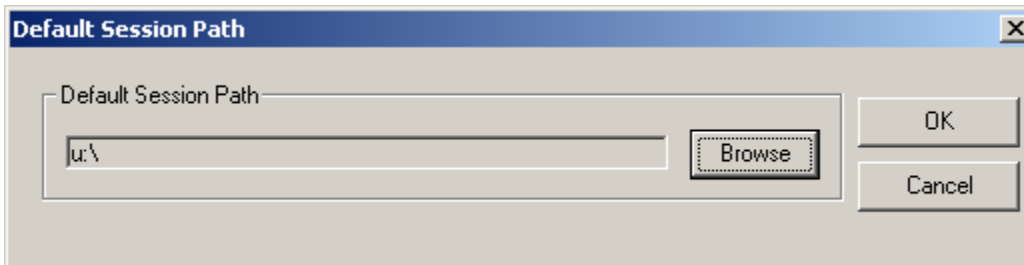
Click on 



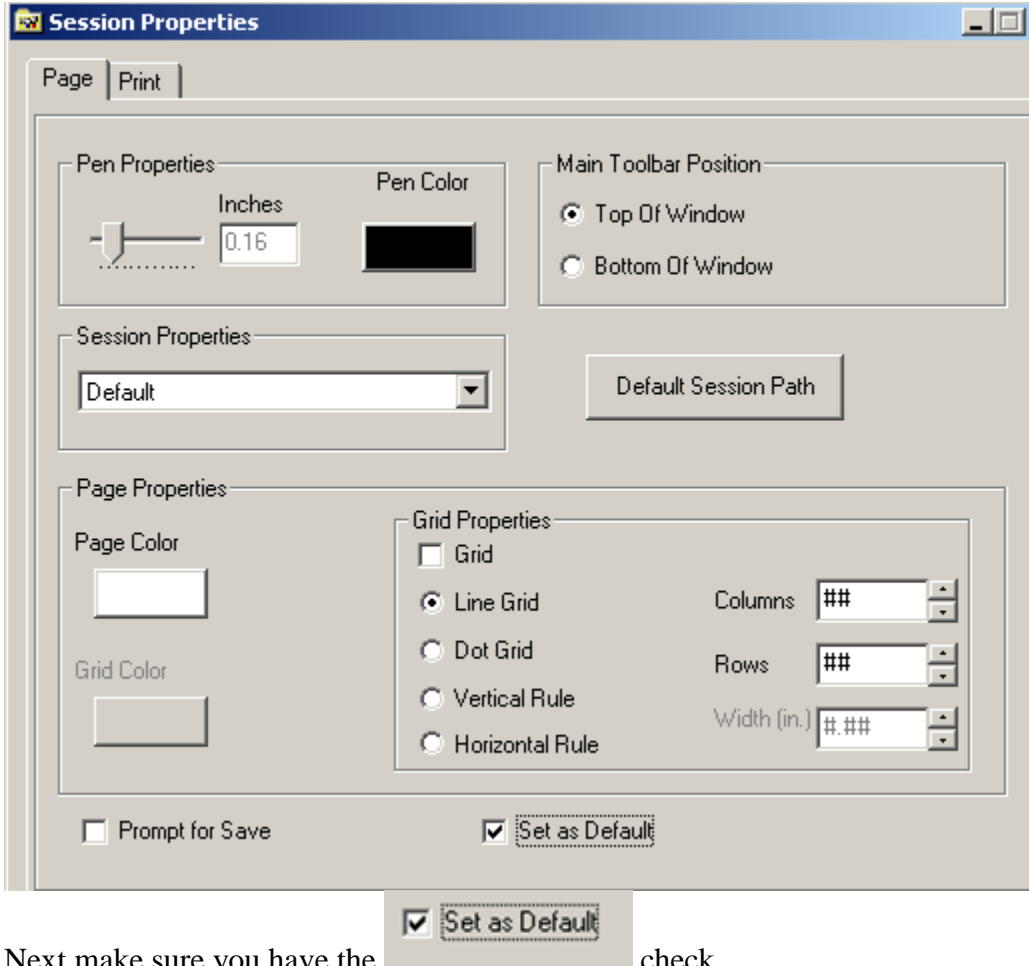
The above default is your local PC – **which we do not want!**

Click on the pull down next to the C: drive and select your U: drive and then navigate to the folder you created





Next click on OK



Next make sure you have the  check

Click on OK

Exit Numonics Virtual WhiteBoard

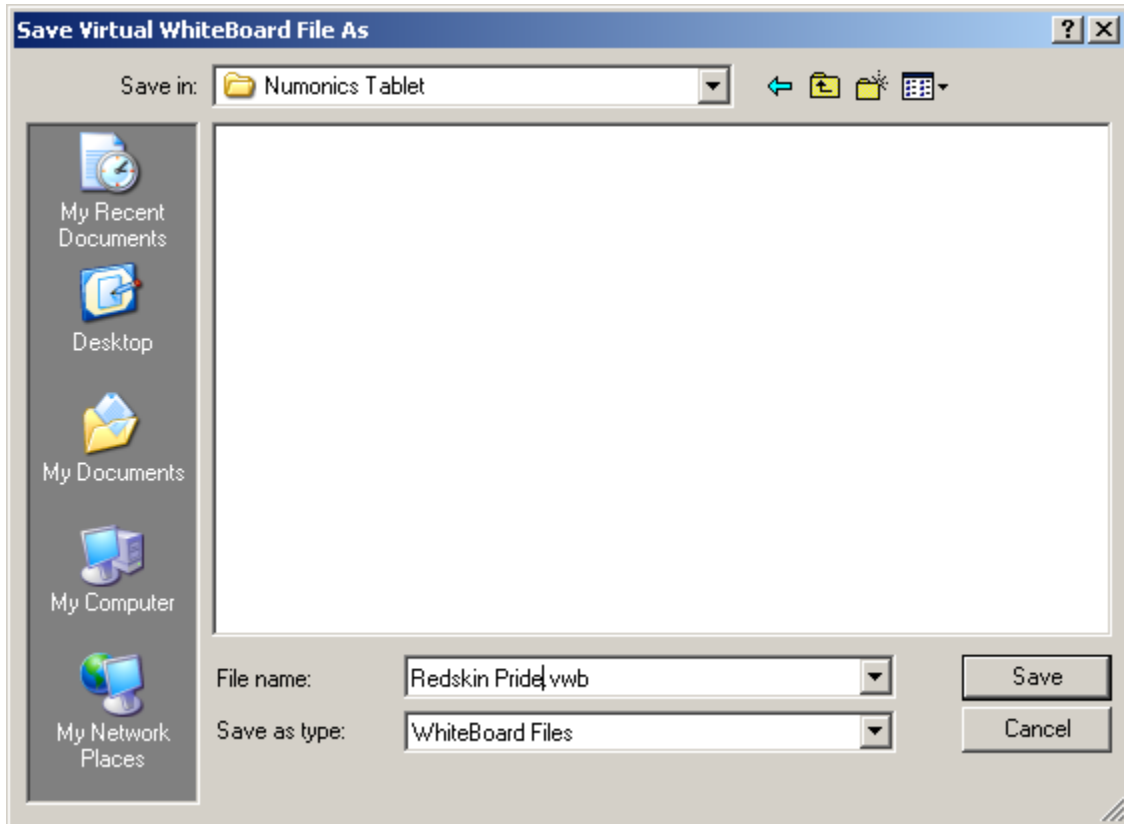
Restart Numonics Virtual WhiteBoard

Saving Your Numonics Virtual WhiteBoard Work to Your Network Drive

Start up Virtual WhiteBoard

Click on the File menu → then click on Save As

Navigate to your desired network folder



Enter a good descriptive file name so that you will understand what is being saved!

Save