

# SETUP – Music Lab Keyboard and Hub Setup

## Purpose

To document how the HS Music Lab Keyboard and Hub is setup.

## Basic Overview

The laptops are connecting to our wireless network and do not need a network cable. The only items hooked to the laptops are the USB White cable and the Power cord.

Keyboards – each have a controller box hooked up to it. There is an orange network cable that is plugged into the top network jack (example 1M) – the M is for the musical keyboard devices.

Power to Keyboards – the keyboards are powered by the laptops – the laptops connect the keyboards via the USB White cable. The keyboards work as long as the laptops are connected and on.

Teacher Unit – is exactly the same as the student unit except it has the Controller Unit that is plugged into the 10D network wall plate port. The teacher unit is labeled teacher.

## Setup HUB

To begin; make sure all of the devices are connected the main hub.



There are 3 different devices to connect:  
(Each device's cable is color coded.)

1. The student's instrument box **BLACK** (uses ports 1M through 9M and port 11M).
2. The teacher's instrument box **GREY** – (uses port 10M)
3. The Controller **GREY** – (uses port 10D)

## Setup Teacher CONTROLLER

The teacher station has one additional piece of equipment, the CONTROLLER.

There is a black with blue end network cable that must be plugged into the controller and into the wall jack 10D.

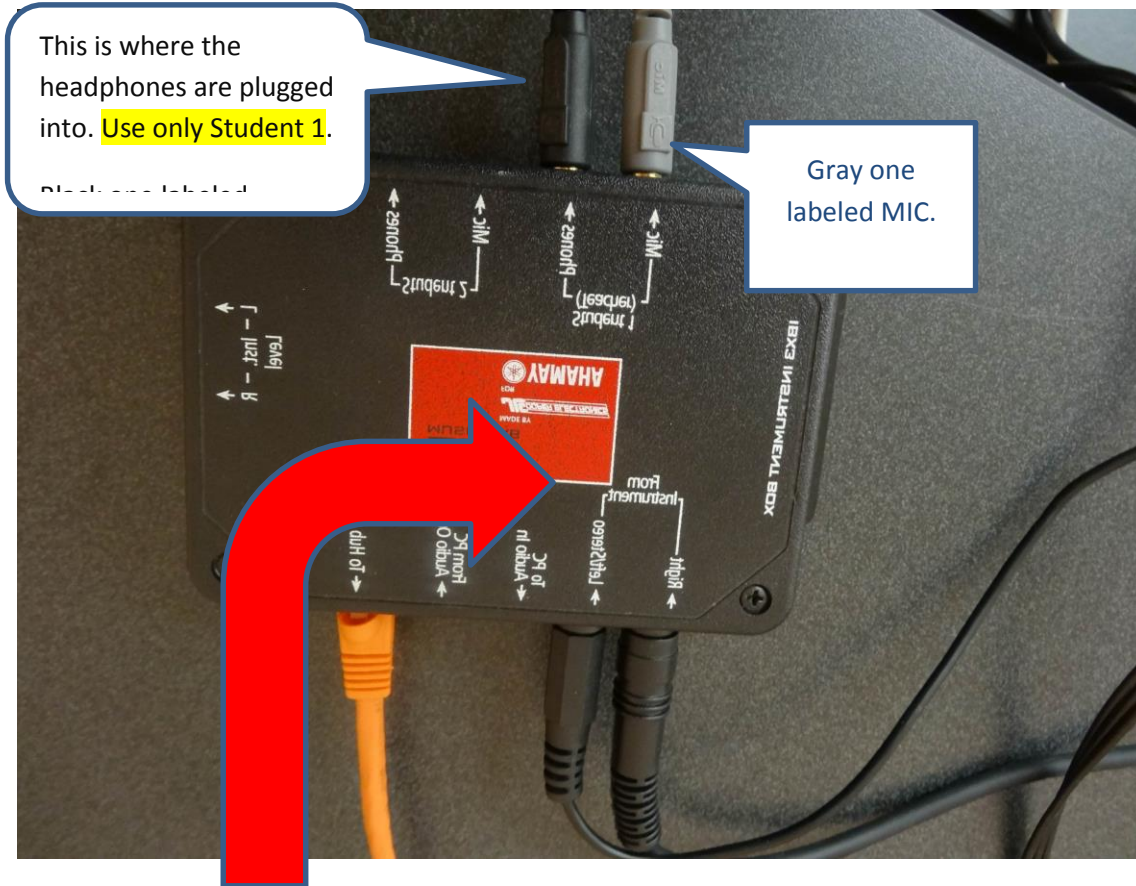


## Setup STUDENT / Teacher HUBs

To begin; make sure all of the devices are connected the main hub.

There is one hub per keyboard.

Next, you need to set up connect the audio cables from the piano/keyboard to the instrument box.



Here is the where the two cables (left and right) are hooked into the instrument box.

Then connect the cables to the back of the Keyboard. Output ports



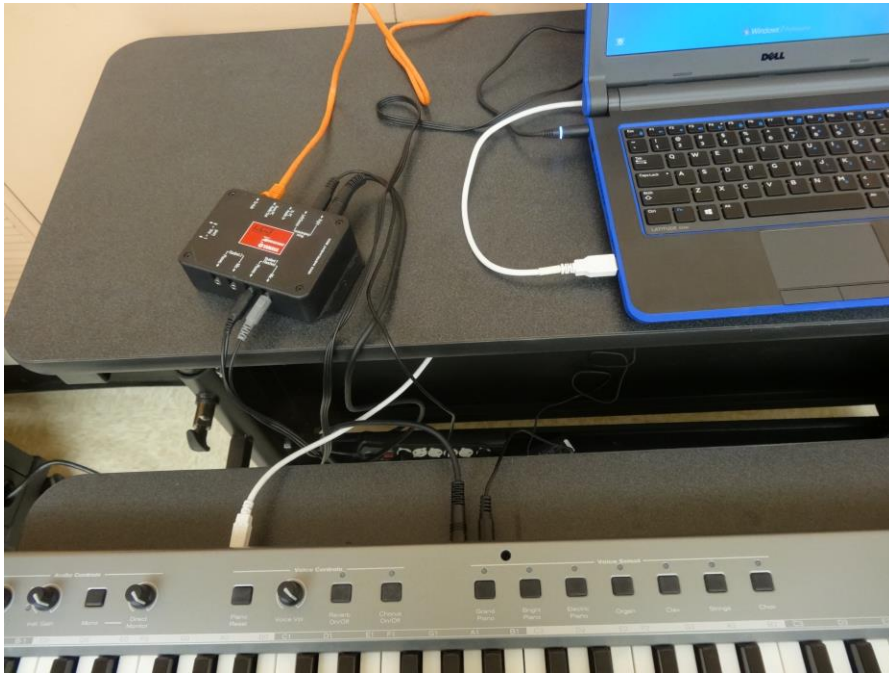
Output ports  
Back view

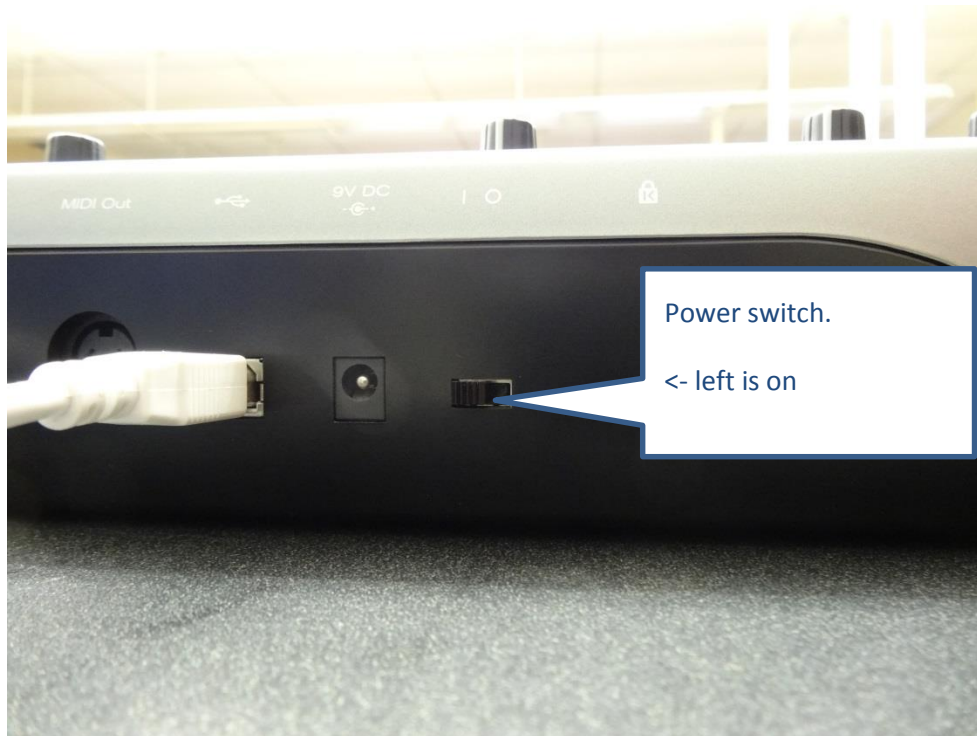


## Setup STUDENT / Teacher USB Power for Keyboard from Laptops

To begin; make sure all keyboards have a white USB cord connected to the laptops – this supplies the power.

Plug the USB into the computer or laptop and plug the other end into the type a USB port on the keyboard.





Turn the computer on and then press the power switch on the keyboard. Also make sure the hub is turned on. You should see red lights on the controller when the hub is powered up.

You should now be able to hear the piano when you play it!

If not then you might need to do some tinkering with the **controller**.