

APP-CONTROL (RESTRICTING STUDENTS TO A SPECIFIC PROGRAM ON THE PC)

Purpose

App-Control is a part of the Geneva Logic Classroom management system that allows a teacher to help keep their students on task.

For example, if you are teaching AutoCAD 2008 and only want the students to be able to access AutoCAD 2008 and now other programs – you can do this with App-Control.

App-Control is available from the teacher PC in any of the SASD PC Computer Labs.

Starting Vision and Connecting to the Classroom (you need to start Vision to access App-Control)

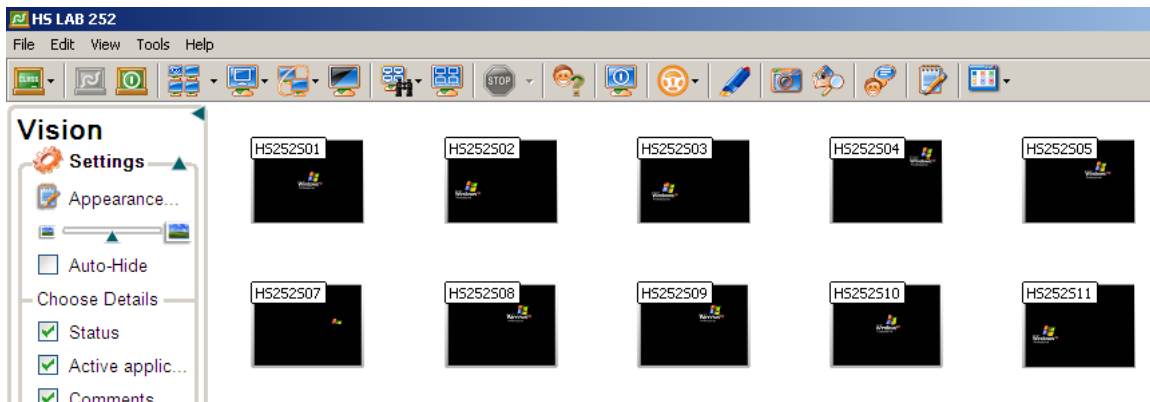
To begin using *AppLock*, an instructor logs on to the instructor computer.

Start *Vision* and Connect to the Classroom:

The *Vision* icon appears on the desktop – just click to start up Vision



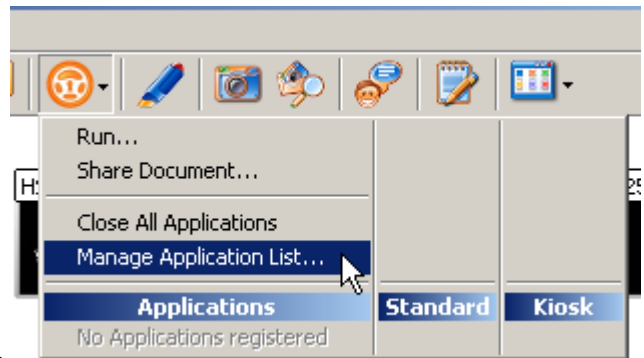
Click on the Connect to Classroom icon



You may now select the Lab to connect to – the following example connects to HS LAB 252.

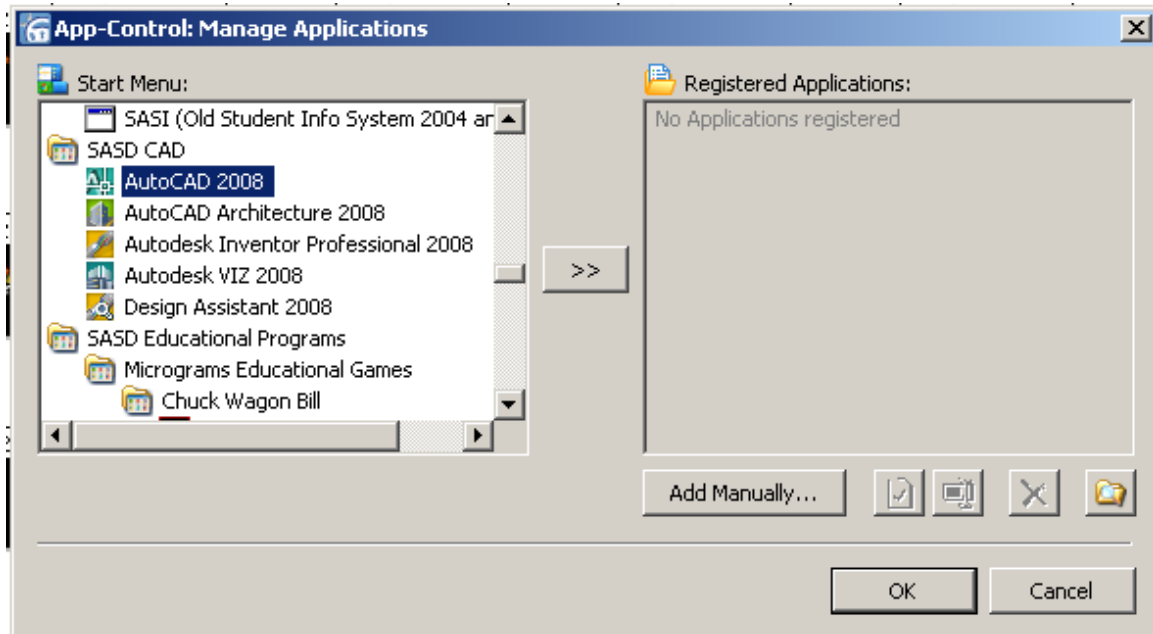
Define Your Application that you wish to Restrict your Students To

After starting up Vision – you need to define your Application that you wish to restrict your students to (you only need to define this once on that particular teacher PC).



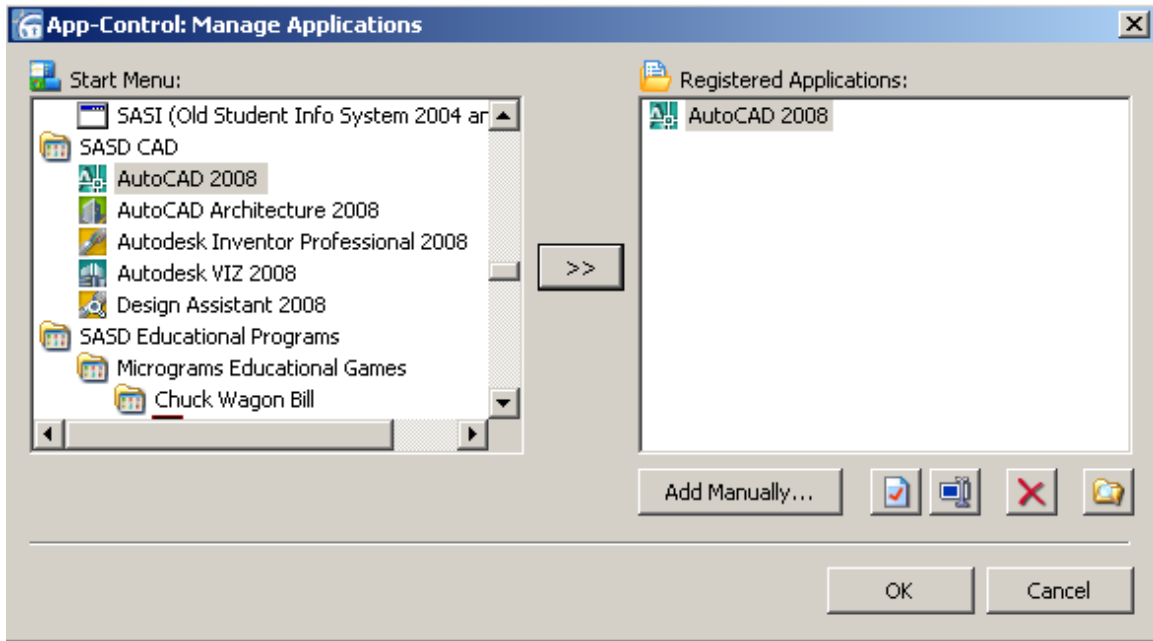
Click on App-Control Manage Application List

The following sample screen appears:



Scroll to the desired application (in this case AutoCAD2008)

Click on the  button to select it

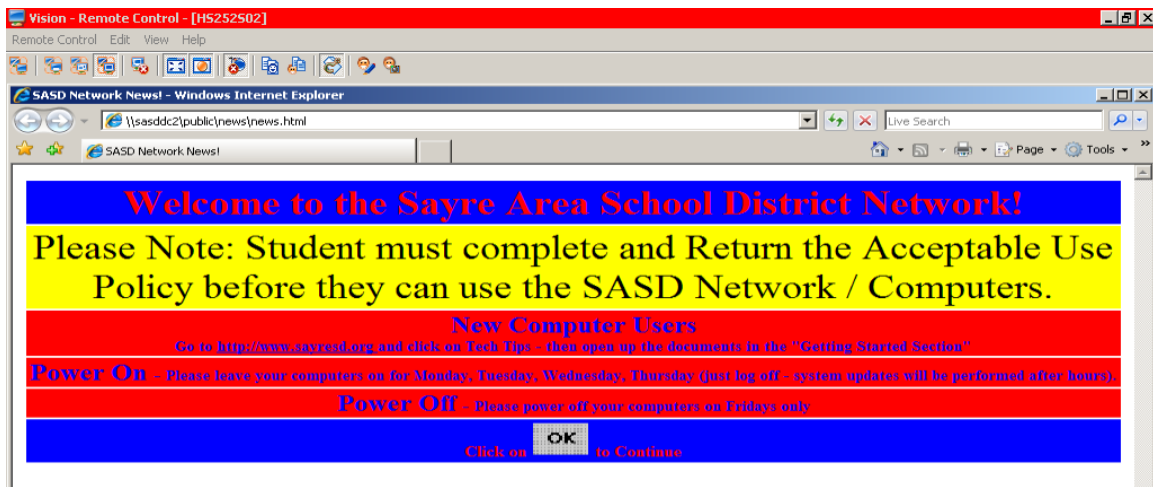


Click on OK

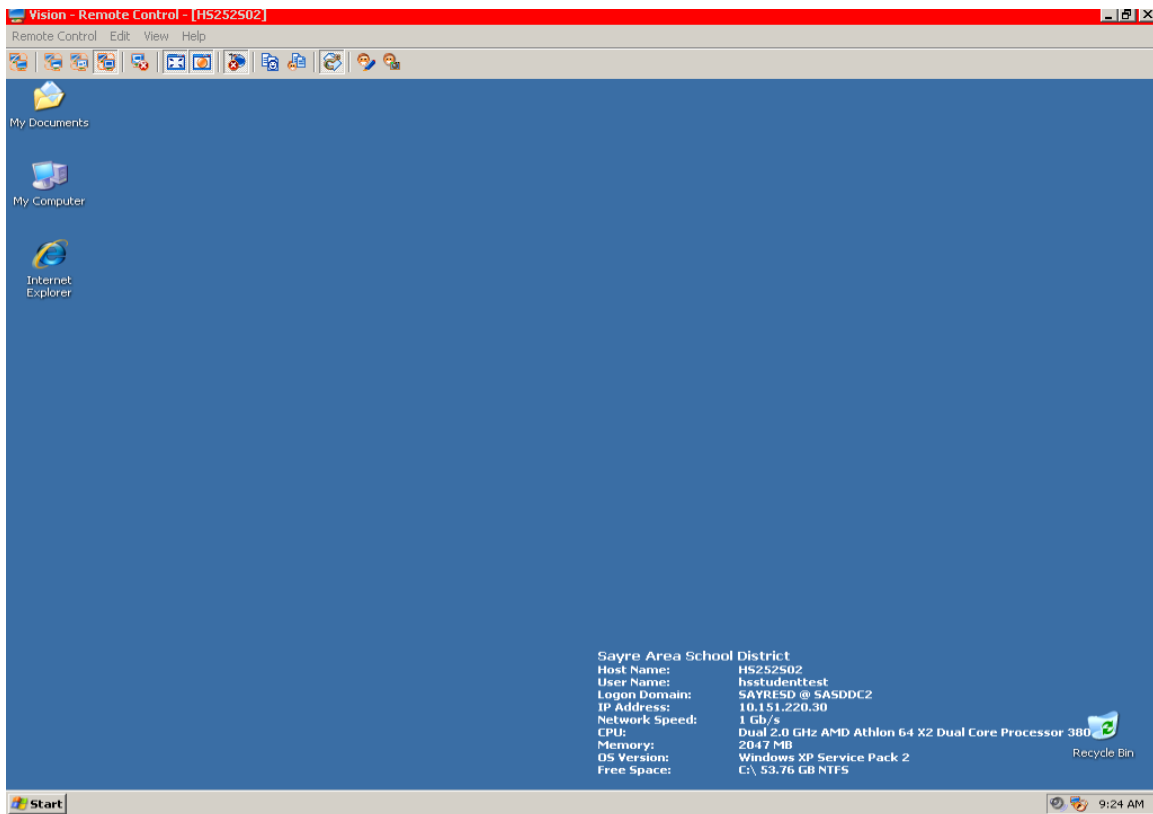
Using App-Control

After following the above steps – you are now ready to use App-Control

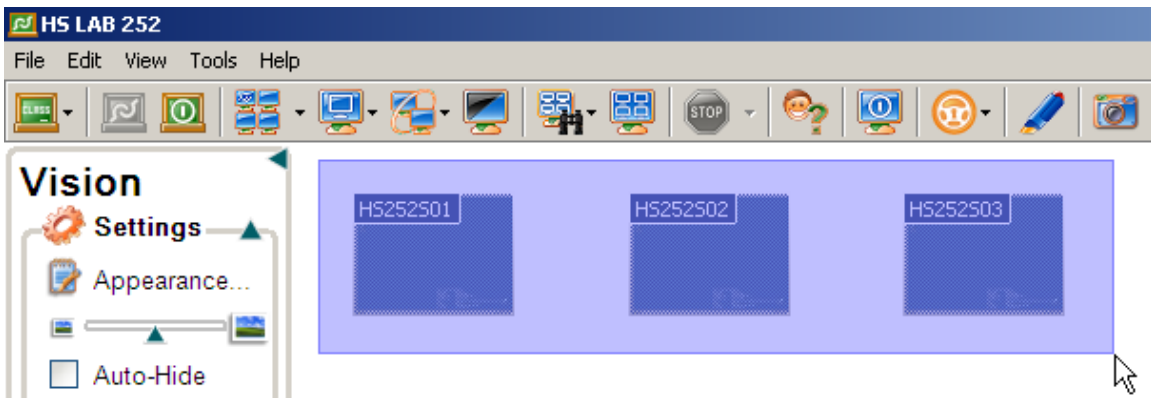
Step 1: Have all students log into their PCs



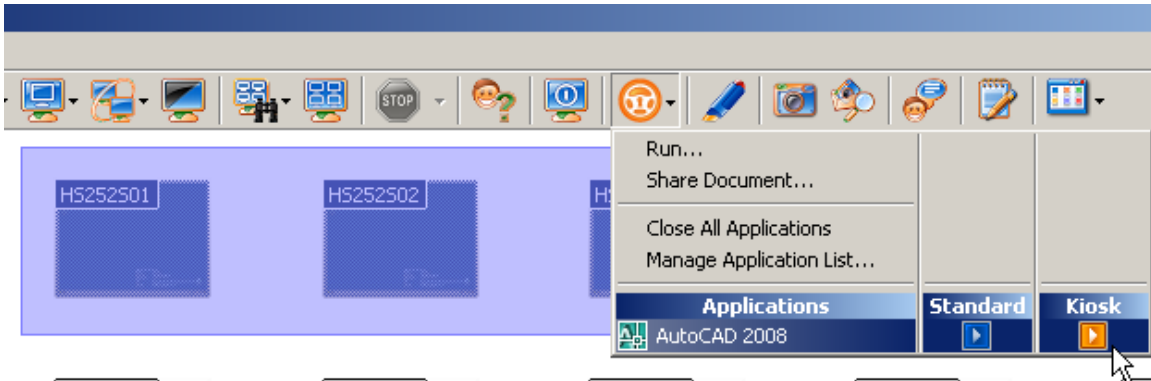
Step 2: Have all students close any open program (including Internet Explorer)



Step 3: From Vision – select all of the PCs (either do CTRL-A short cut keys or drag your mouse over all of the PCs)



Step 4: Turn on App-Control



In the above example – click on the down arrow next to App-Control and choose the desired application (AutoCAD 2008) and then click on Kiosk button.

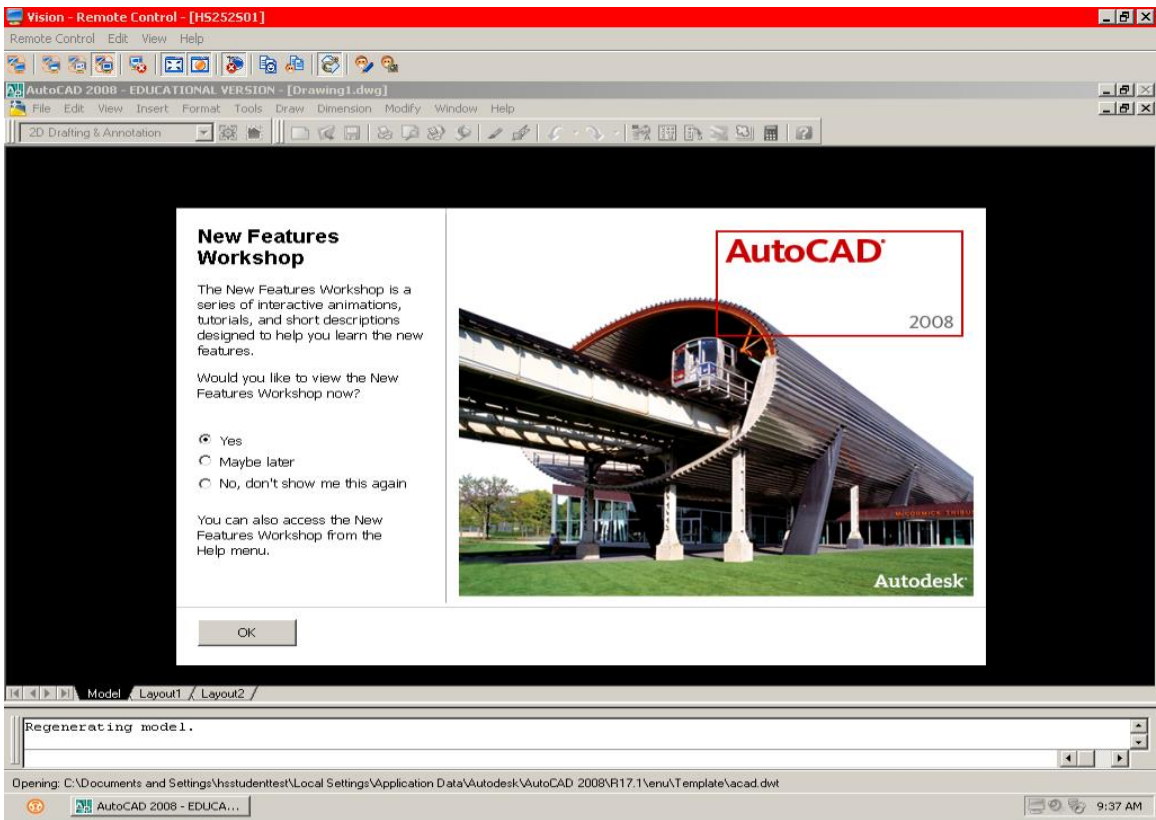
Kiosk mode only allows the students to use the selected program (in this case AutoCAD 2008).

You will now see the following:



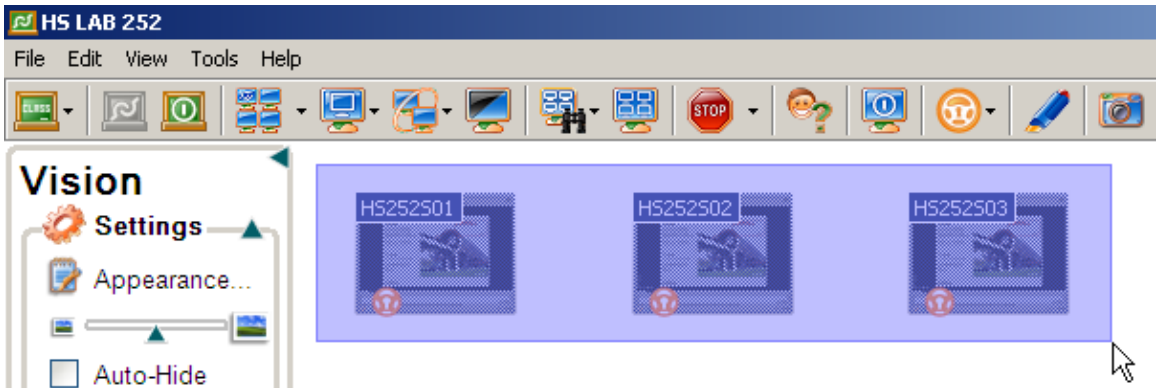
The App-Control icon will now appear on all of the controlled student PCs.

What does the student see?



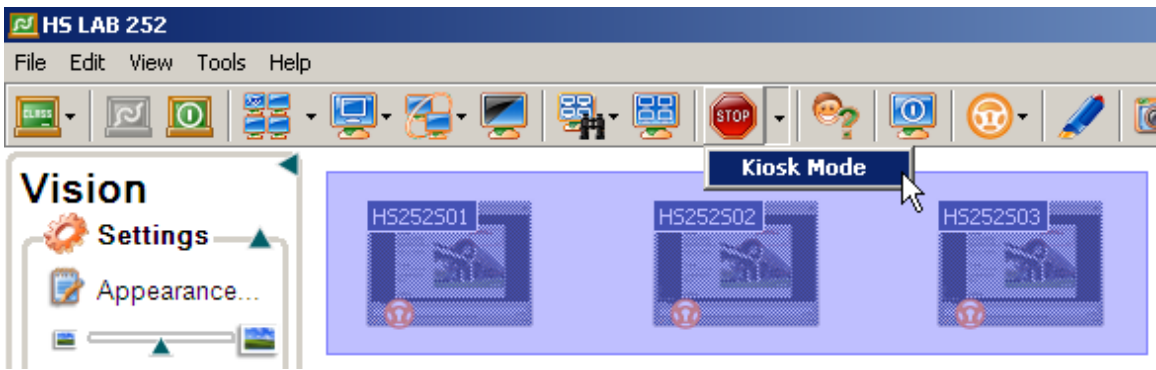
Note that the student can work in the program but can not access anything else on the PC (the start button is not even accessible).

Once the lab is finished, do the following:



Highlight all of the PCs

Click on Stop Kiosk Mode



Disconnect from the Classroom



Have each student log out of their computers.