

# SAYRE AREA SCHOOL DISTRICT TECHNOLOGY TIPS

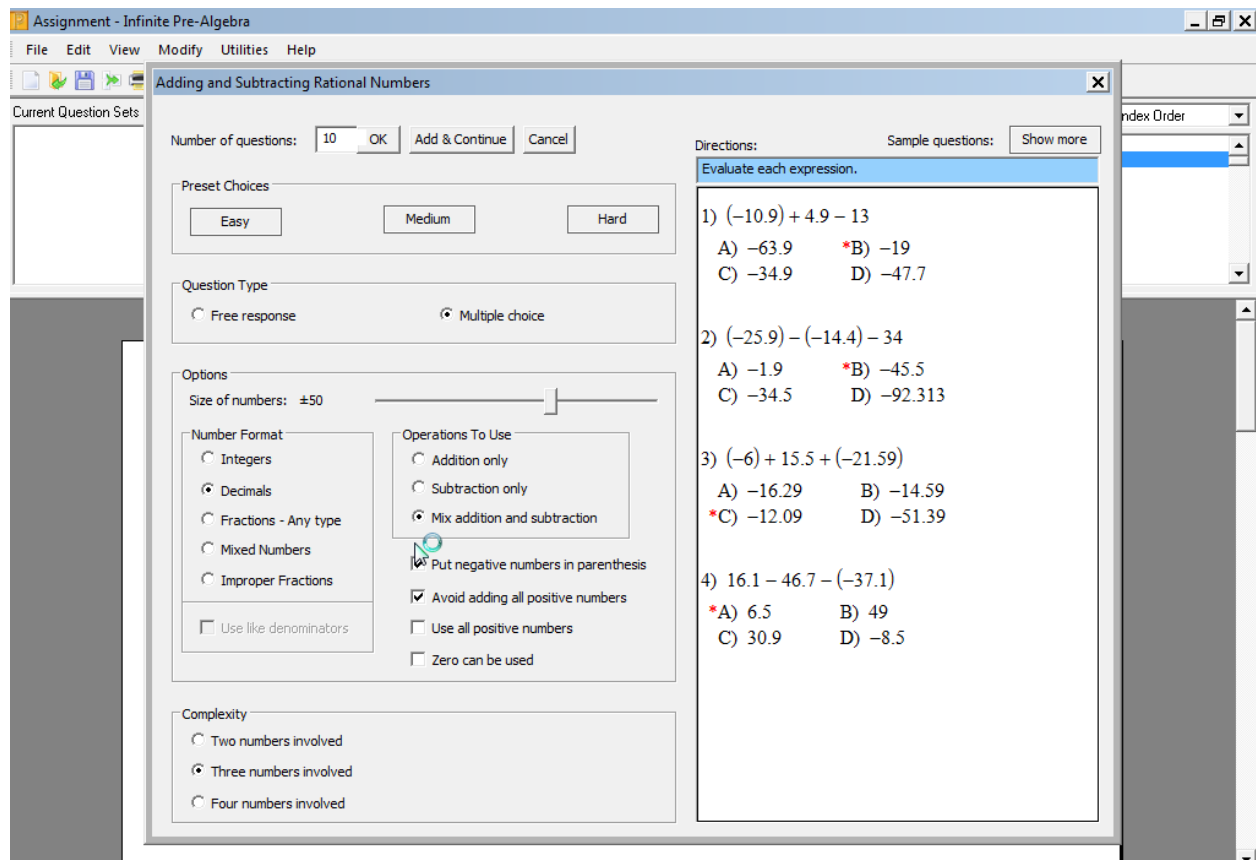
## ACCESSING THE ALGEBRA (KURTA) SOFTWARE FROM SASD TEACHER PCs

### Purpose

This documentation illustrates how to access Algebra (Kurta) software from Sayre Area School District Teacher PCs.

There are two programs to access, Pre-Algebra and Algebra I.

Below is a sample from Pre-Algebra.



## Installation on HS Teacher PCs

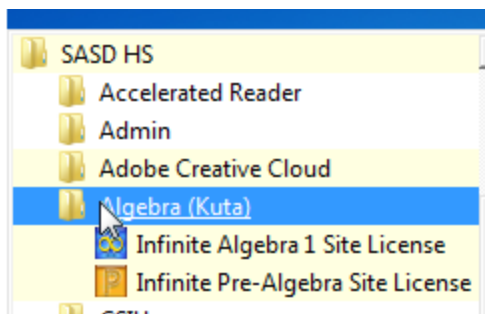
To access the software, please note the following:

1. Software is only accessible from High School Teacher PCs in the classrooms (not the labs).
2. Software needs to initially install during your logon your PC.
3. You will need to log in twice to have access to the software (the first login installs both programs and the second login configures the site license).

## Accessing the Software on HS Teacher PCs

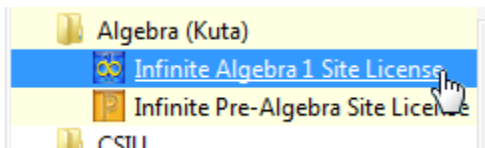
How will you know that you have the software properly installed?

You will see the following shortcuts appear when the installation and configuration is complete:



When you first start up each program, the site license key is setup but you will be prompted to enter your PCs computer name.

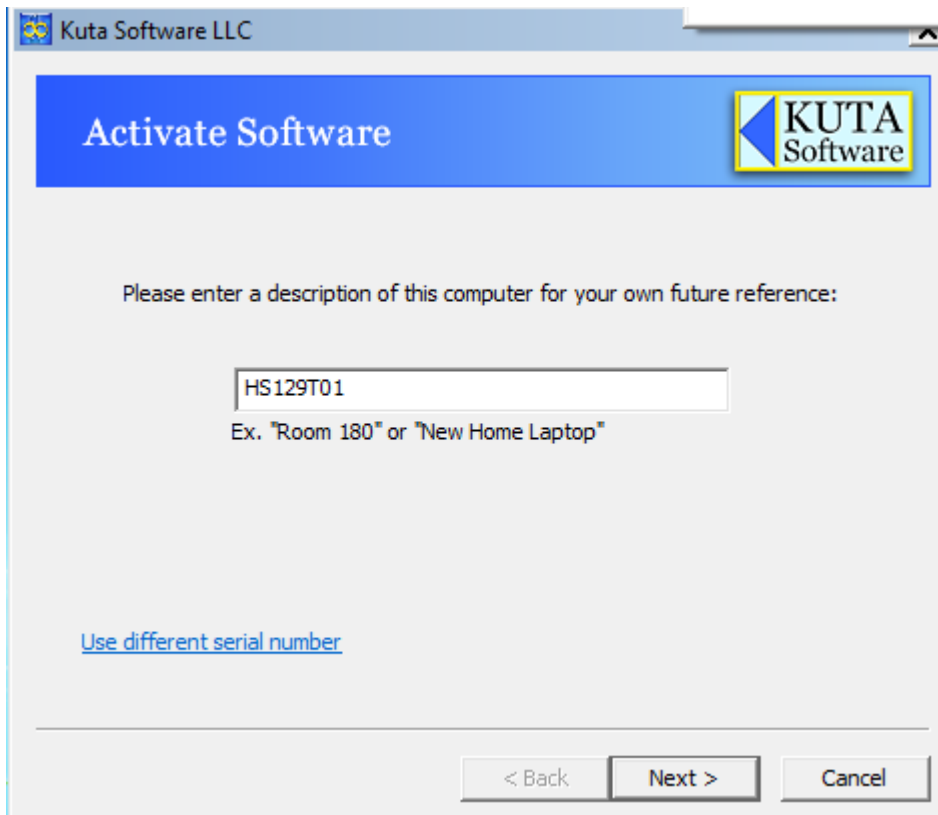
The following is an example from HS129T01 while starting up the Algebra I program:



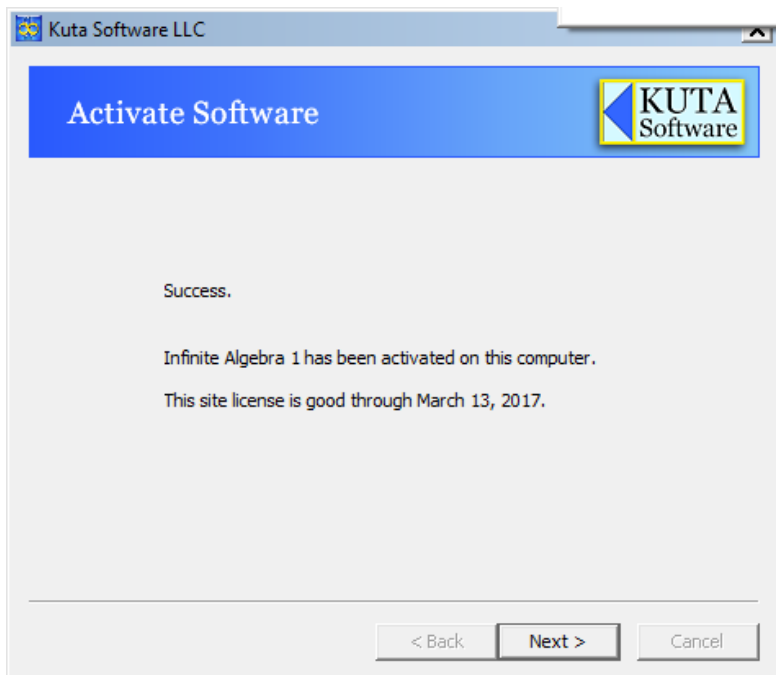
Off of your Start bar – click on Infinite Algebra 1 Site License



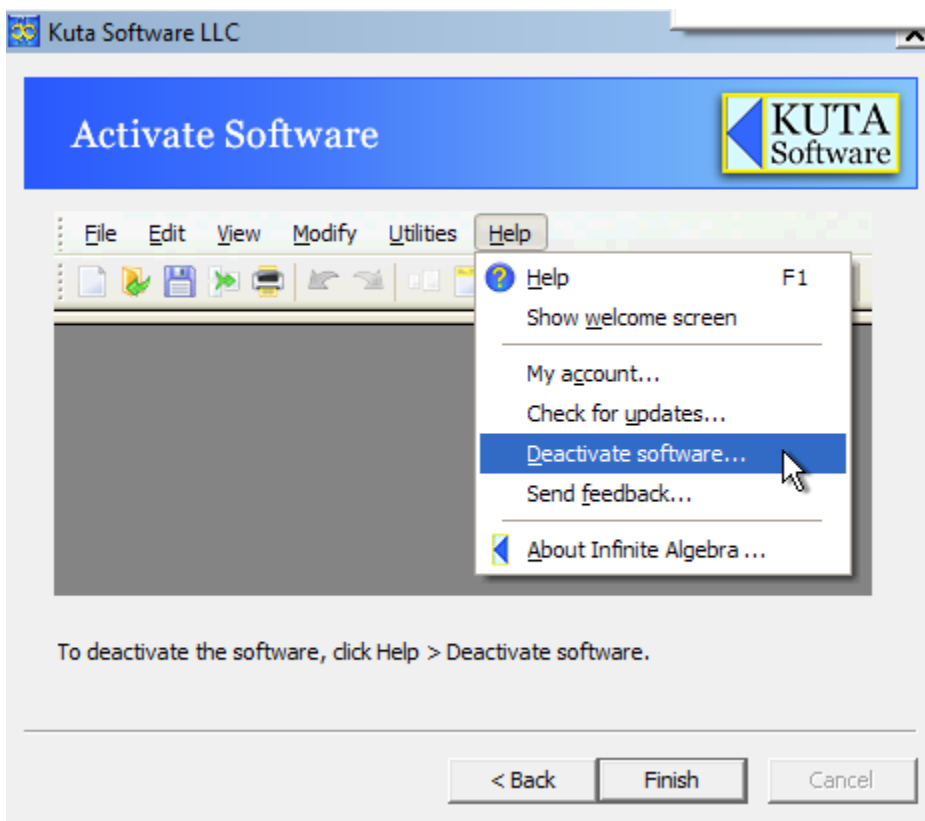
Click on Next



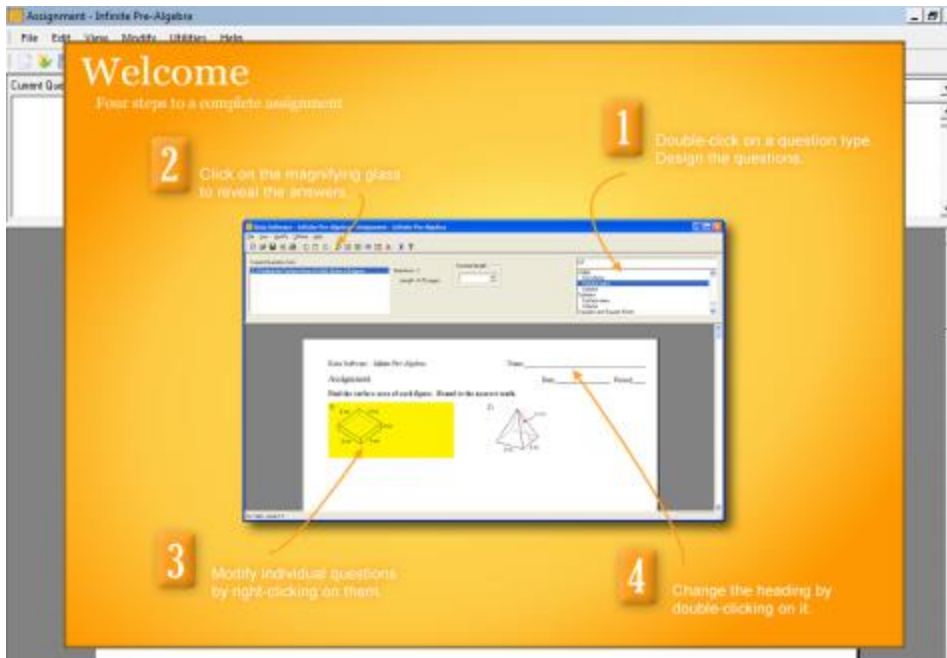
Click on Next



Click on Next



Click on Finish (we do not wish to ever deactivate software)



Do the same type of procedure for the Pre-Algebra program.

That's it!