

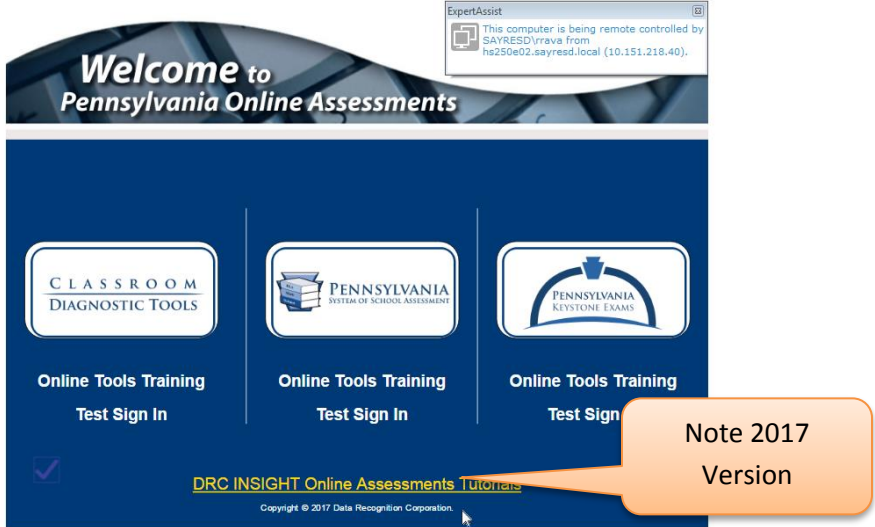
# SAYRE AREA SCHOOL DISTRICT TECHNOLOGY TIPS

## ACCESSING THE PA ONLINE ASSESSMENTS FROM SASD PCs

### UPDATED FOR SPRING 2017

## Purpose

This documentation illustrates how to access **PA Online Assessments** Exams from Sayre Area School District PCs.



## Contents

Purpose.....	1
Updates – Plan Time for This.....	2
Background on PA Online Assessments .....	2
How do the PA Online Assessments Work? .....	2
Installation of PA Online Assessments Software / Configuration .....	2
How do I know if the PA Online Assessment software is installed? .....	2
Where can the PA Online Assessments be Accessed? .....	3
How can I Access PA Online Assessments? .....	3
Optional Method:.....	3
Updates Automatically From PDE .....	6
Check Readiness of INSIGHT Software on PC (Optional).....	9

## Updates – Plan Time for This

Please note that PDE can update the tests / software at any time they need to. The good news is that their software will automatically get the updates. On the new PCs, it takes between 1 and 3 minutes to update.

Please plan for these updates (see the section below on [Updates Automatically from PDE](#)).

## Background on PA Online Assessments

PA Online Assessments need to have the PA Online Assessment software installed on SASD PCs.

KEY FEATURE: This program only allows users to run the assessment / exam and locks down the PC so that no other program can be used while taking the assessment / exam.

## How do the PA Online Assessments Work?

For 2017, the PA Online Assessments work as follows:

1. Every SASD computer is now registered to the PDE PA Online Assessments Cloud (to prevent fraud).
2. When a student logs in and takes a test, the content of the test comes from our SASD TSM server.
3. The student responses are sent to the PDE PA Online Assessments Cloud and our SASD TSM server – if the connection to the PDE PA Online Assessments Cloud is down (ex. The internet) – then when the Cloud / Internet is back up and running, the student responses are then sent to the cloud (fail safe to ensure the responses are sent to the PDE PA Cloud).

## Installation of PA Online Assessments Software / Configuration

Please Note: PA Online Assessments needs the following to install (please note that there are now 2 parts).

Basically, the first log in installs the software and the second login configures the software. As long as the SASD computer being used has been logged into at least once, the program will run. Details are below:

1. The new version of the PA INSIGHT Online Assessment Software Needs to be installed (this will occur during the first login – do not need to start up the DRC INSIGHT software – just log out and back into the PC a second time).
2. PA Online Assessments Registration of SASD Device and configuration. The second login will install the proper configuration and once the program is started – register the device to DRC's web site (this is new for this year).

## How do I know if the PA Online Assessment software is installed?

On a SASD PC, you will see the following shortcut on the desktop:



New ICON use  
to access tests

## Where can the PA Online Assessments be Accessed?

PA DRC INSIGHT Online Assessments can be accessed from any SASD Desktop PC or Laptop PC.

## How can I Access PA Online Assessments?

**PLEASE NOTE:** If the above software is not installed, the shortcut will not appear to access this program.

You may access the software from the desktop shortcut or from the following location.

On the SASD PC, you will see the following shortcut on the desktop:

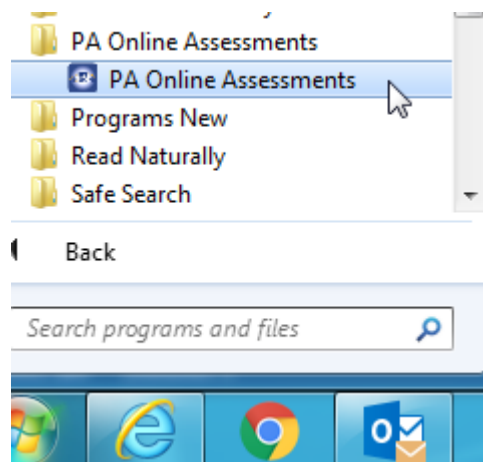


Click on the DRC Insight link to take the test.

## Optional Method:

Start – All Programs – SASD HS or SASD SE

Open up this folder & click on the PA Online Assessments shortcut



Once you click on the program icon, If you see the screen below – you are ready to take the PA Test.

**Pennsylvania Online Assessments**

**CLASSROOM  
DIAGNOSTIC TOOLS**

**Online Tools Training**  
**Test Sign In**

**PENNSYLVANIA  
SYSTEM OF SCHOOL ASSESSMENT**

**Online Tools Training**  
**Test Sign In**

**PENNSYLVANIA  
KEYSTONE EXAMS**

**Online Tools Training**  
**Test Sign In**

[DRC INSIGHT Online Assessments Tutorials](#)

**Exit**

Copyright © 2017 Data Recognition Corporation.

Note 2017  
Version

Please Note: If you see the following screen, you will need to log out and back in to install the 2<sup>nd</sup> component of PA Online Assessments. You will now need to log out and back in one more time to install the 2<sup>nd</sup> component.

## Configuration Not Found

Please raise your hand and wait for help.

---

Contact your technical resource and provide them with the following information:

DRC INSIGHT cannot retrieve the configuration profile associated with this device because it cannot find the Device Toolkit ORG Unit ID. The ORG Unit ID was entered incorrectly, was deleted, or was not assigned to this device.

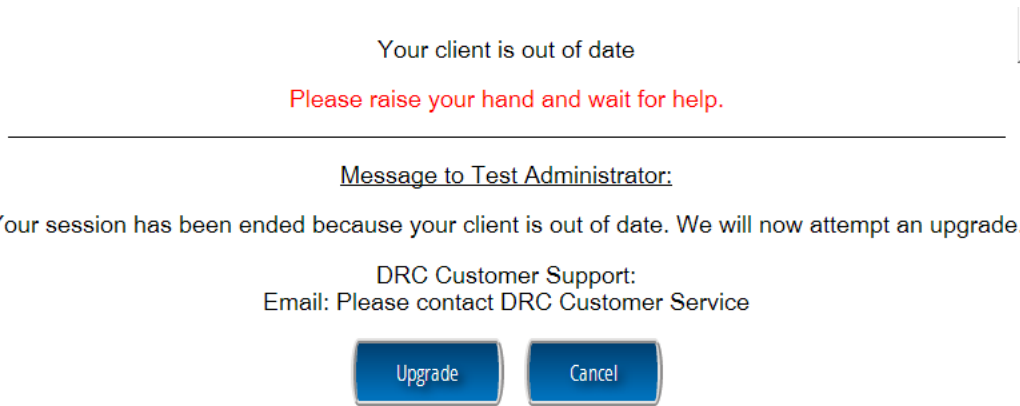
Click **Assign Device to ORG Unit** to enter the correct ORG Unit ID, or click **Cancel** to end the process.

Assign Device  
to ORG Unit

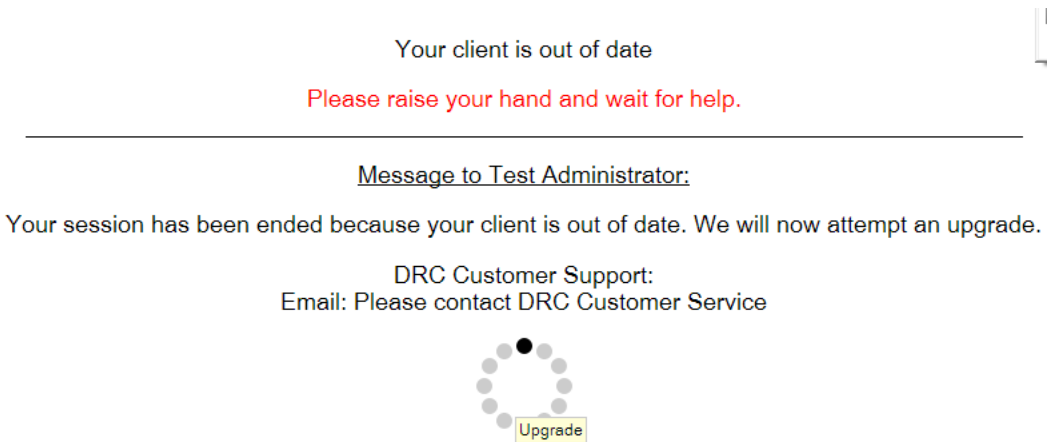
Cancel

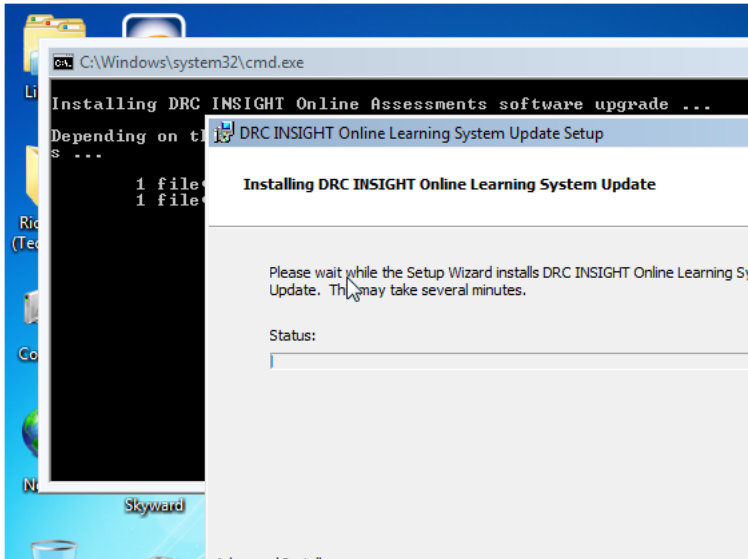
# Updates Automatically From PDE

Please note – if there is an update – the following screen will appear:



Click on Upgrade (Make sure to wait until you see some progress – there is a little delay)





Wait until this is complete – some of the downloads are bigger and take more time– do not **Cancel!**

Once complete, the following screen will appear:

Submit

Client Version	Configuration Source	Installation Directory	
7.0.0	Device Toolkit	C:\Program Files (x86)\DRC INSIGHT Online Assessments	
Machine Name	User Name	OS Level	OS Version
HSGYML07	rrava	Microsoft Windows 7 Professional Service Pack 1 (build 7601), 64-bit	6.1
Response Caching TSM Connection	Response Caching TSM Configuration	Content Caching TSM Connection	Content Caching TSM Configuration
https://3f479890-legacy-prod.drc-centraloffice.com:8443/	Yes	https://3f479890-legacy-prod.drc-centraloffice.com:8443/	Yes
HTTPS Proxy	Device ID	Device Toolkit Organizational Unit and ID	District
	7kzyz7IWf	SASDHS (6429)	SAYRE AREA SD
			School
			SAYRE AREA HS
Screen Resolution	Internet Connection	System Capability	Level
✓	✓	Response Caching TSM Connection	Agent
		Response Caching TSM Status	
		Response Caching TSM Version	
		Content Caching TSM Connection	Details
		Content Caching TSM Version	Details
		Client Version	Details

You will see green check marks showing that the PC is all set to take the test.

Click on Exit

You will need to start up the test again from the shortcut on your SASD PC.

**Pennsylvania Online Assessments**

**CLASSROOM  
DIAGNOSTIC TOOLS**

**Online Tools Training**  
**Test Sign In**

**PENNSYLVANIA  
SYSTEM OF SCHOOL ASSESSMENT**

**Online Tools Training**  
**Test Sign In**

**PENNSYLVANIA  
KEYSTONE EXAMS**

**Online Tools Training**  
**Test Sign In**

[DRC INSIGHT Online Assessments Tutorials](#) **Exit**

Copyright © 2017 Data Recognition Corporation.

You may now take the desired exam

Make sure to follow all instructions.

When finished completing the exam, click on Exit



## Check Readiness of INSIGHT Software on PC (Optional)

To check to verify that the INSIGHT Software is set to go on a PC, just do the following:

Start up the program



Click on the Check Mark



Enter the following code **7745**

## Enter Access Code

Submit

**System Information**

Client Version	Configuration Source	Installation Directory		
7.0.0	Device Toolkit	C:\Program Files (x86)\DRC INSIGHT Online Assessments		
Machine Name	User Name	OS Level	OS Version	
HSGYML07	rrava	Microsoft Windows 7 Professional Service Pack 1 (build 7601), 64-bit	6.1	
Response Caching TSM Connection	Response Caching TSM Configuration	Content Caching TSM Connection	Content Caching TSM Configuration	
https://3f479890-legacy-prod.drc-centraloffice.com:8443/	Yes	https://3f479890-legacy-prod.drc-centraloffice.com:8443/	Yes	
HTTPS Proxy	Device ID	Device Toolkit Organizational Unit and ID	District	School
	7kzyz7iWf	SASDHS (6429)	SAYRE AREA SD	SAYRE AREA HS
✓	Screen Resolut			
✓	Internet Conne			
	o Capability			
	Level			
	Agent			
✓	Response Caching TSM Connection			
✓	Response Caching TSM Status			
✓	Response Caching TSM Version			
✓	Content Caching TSM Connection			Details
✓	Content Caching TSM Version			Details
✓	Client Version			Details

Every SASD Device is now registered to the PDE / DRC Cloud

All computers now need to use the PDE / DRC Cloud

All High School Computers will use this as the school

All Snyder Computers will have "SNYDER EL SCH" as the school

All items need to be in **Green** for status – click on Exit when finished with the testing