

# SAYRE AREA SCHOOL DISTRICT TECHNOLOGY TIPS

## ADVANCED FEATURES

### (VERSION 15)

#### Purpose

To describe advanced features of Thirtyseven4 that end users can control.

The following features will be discussed:

Launch AntiMalware

Enable Entertainment Mode

Roaming Client

Update Now

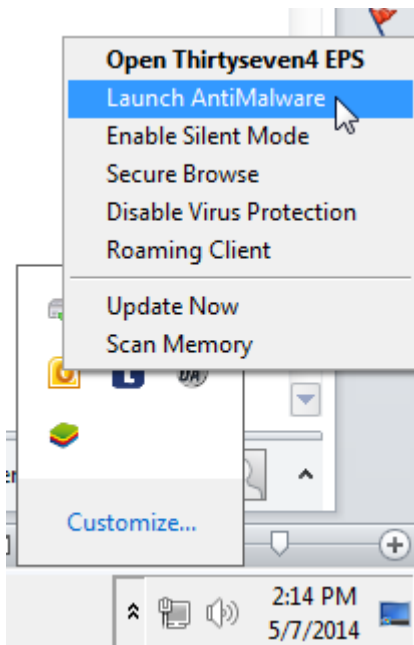
#### Please Note

If you click Settings you will be prompted for a password – only the Technology staff has access to these settings. Any features that prompt for a password are for Technology staff use only. This document covers items that end users can control.



## Launch AntiMalware

Right click the Thirtyseven4 icon  
Click Launch AntiMalware



Click on Scan Now

Malware	Files	Folders	Registry entries	Threat level
Lord Of The Chess 1.8.0.0	0	0	1	Low Risk
Water Illusion Screensaver 1.71	0	0	1	Low Risk
EZTMusicManager	0	0	1	Low Risk
CommView	0	0	2	Low Risk
LordOfSearch	0	0	1	Low Risk
VirtuaGirl	0	0	2	Elevated Risk
Suspicious	2	0	0	Low Risk
PehPai	0	0	1	Elevated Risk
PC Remote Control	0	0	1	Low Risk

Malwares detected: 9

Malicious items detected: 2

Files: 2

Folders: 0

Registry entries: 10

Scan Progress: 82% completed

Stop Scan

The following sample results appear:

Scan Result

- Lord Of The Chess 1.8.0.0 (Threat Level : Low Risk)
  - Registry entries
    - HKEY\_LOCAL\_MACHINE\SOFTWARE\Classes\...
- Water Illusion Screensaver 1.71 (Threat Level : Low Risk)
- EZTMusicManager (Threat Level : Low Risk)
- CommView (Threat Level : Low Risk)
- LordOfSearch (Threat Level : Low Risk)
- VirtuaGirl (Threat Level : Elevated Risk)
- PehPai (Threat Level : Elevated Risk)
- PC Remote Control (Threat Level : Low Risk)
- Exitbody (Threat Level : Moderate Risk)
- WinZix 1.0 (Threat Level : Moderate Risk)
- ElcomSoft Proactive Password Auditor (Threat Level : Moderate Risk)
- Suspicious (Threat Level : Low Risk)

Malware Information

Name: Lord Of The Chess 1.8

Type: Adware Bundler

Threat Level: Low

Details...

Malwares detected: 12

Malicious items detected: 2

Files: 2

Folders: 0

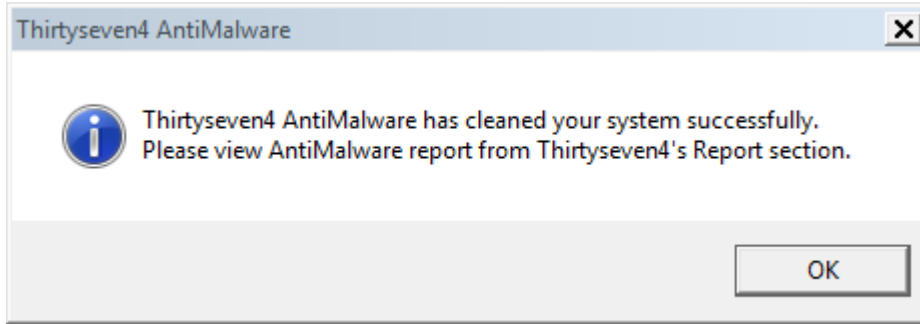
Registry entries: 13

Set System Restore point before cleaning

Skip Clean

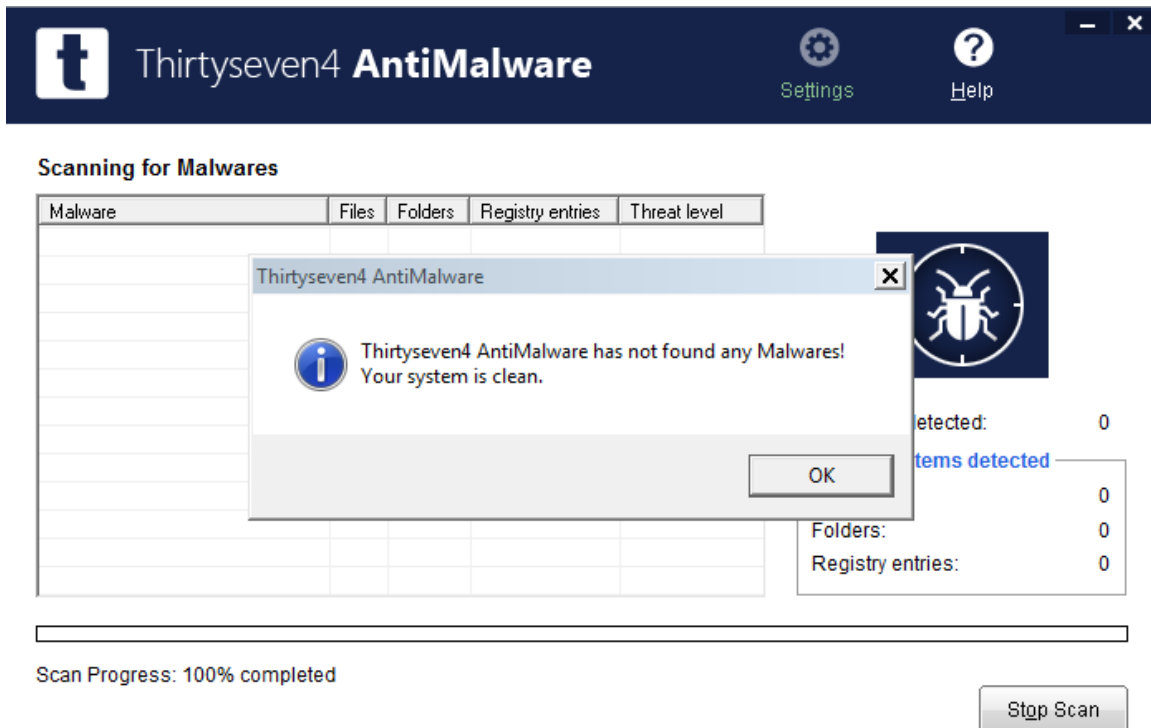
For the above sample, malware was found

If the scan found items, select Clean



Click OK

If applicable, rerun the scan after you have cleaned the items



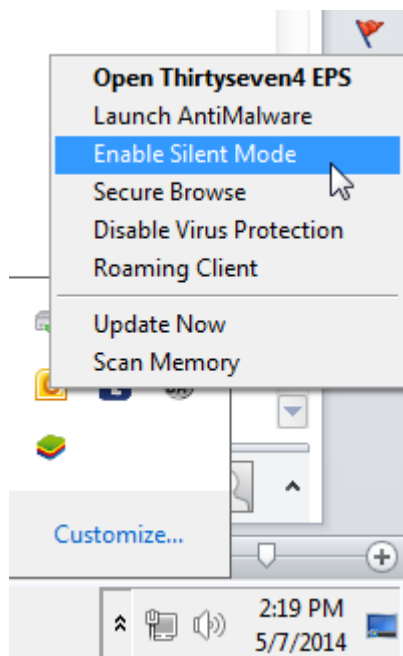
Click OK

## Enable Silent Mode

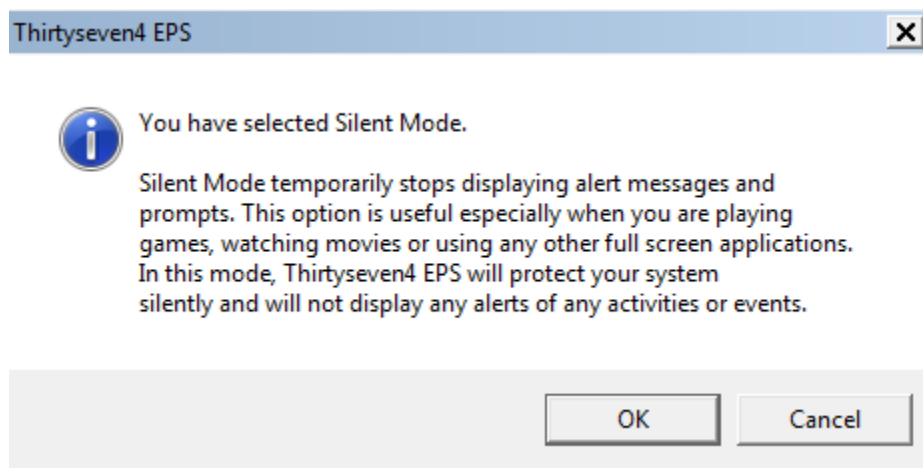
What is the Silent Mode?

This feature “Enables/Disables all Thirtyseven4 prompts and notifications”

Right click the “T” in the system tray and select Enable Silent Mode

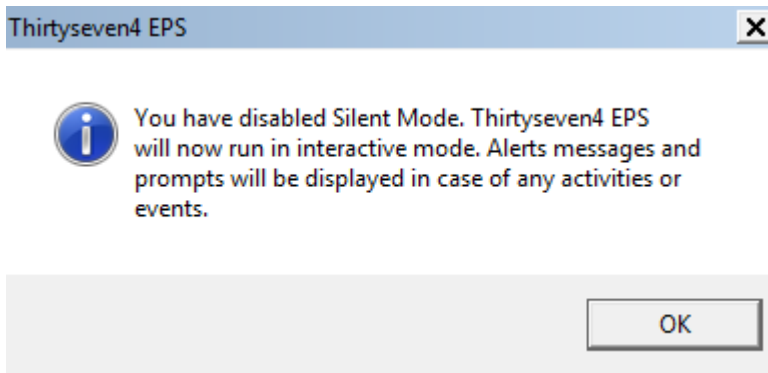
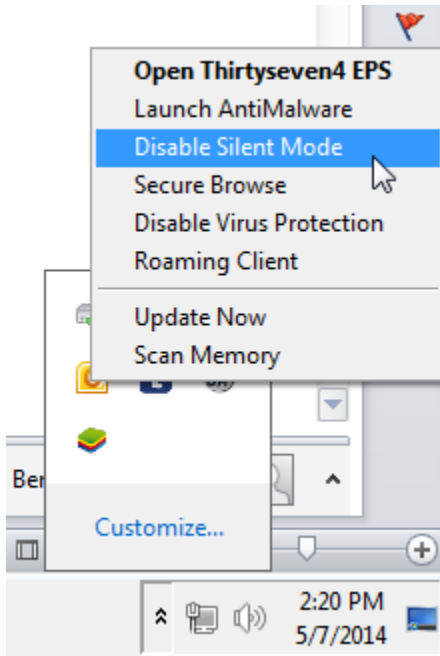


Select Enable Silent Mode



Click OK

To disable the feature, click **Disable Entertainment Mode**



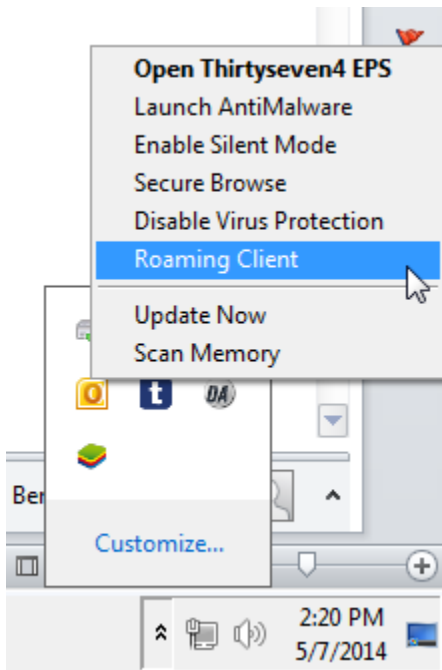
Click OK

## Roaming Client

Note: this information is only for laptops

The Roaming Client feature allows laptops taken outside of the SASD network to connect to the Internet for updates

On the laptop, right click the Thirtyseven4 icon in the system tray



Select Roaming Client

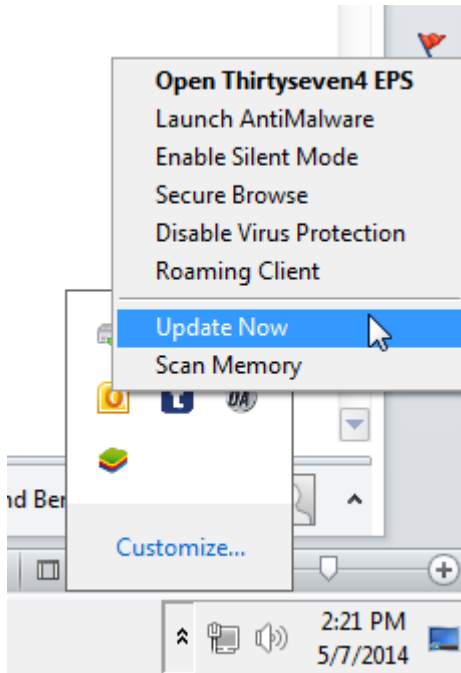
When the laptop is back in the network, please deselect the Roaming Client feature



## Update Now

This feature updates the signature files so that the antivirus program is up to date

Right click the “T” in the system tray and select Update Now



Click Finish when complete



