

# SAYRE AREA SCHOOL DISTRICT TECHNOLOGY TIPS

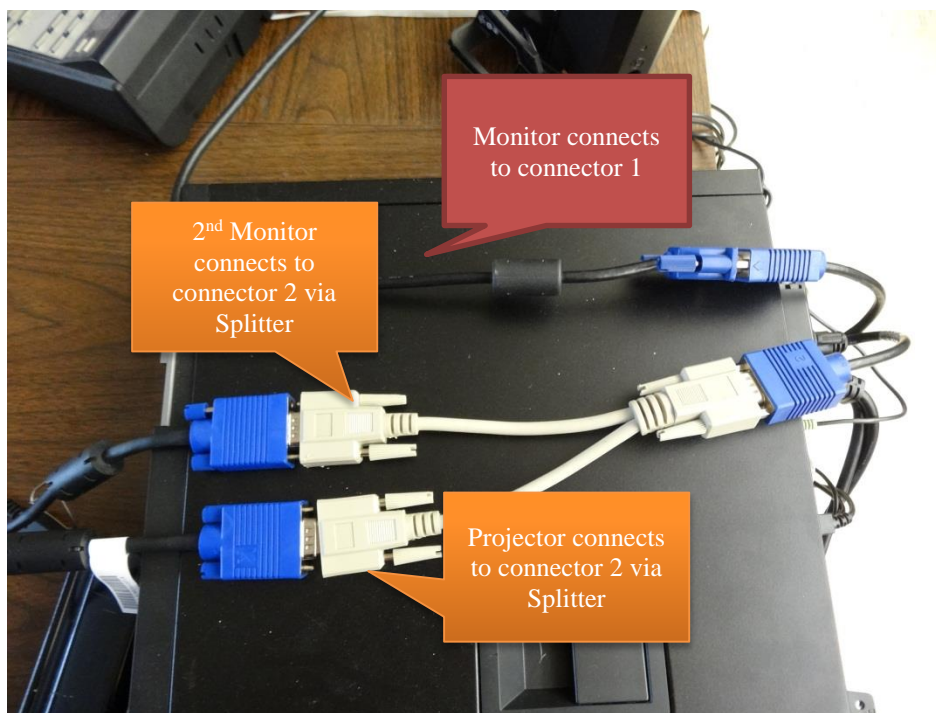
## 2 MONITORS 1 PROJECTOR EXTEND SETTINGS

### Purpose

To properly setup and use 2 monitors with 1 computer projector at SASD.

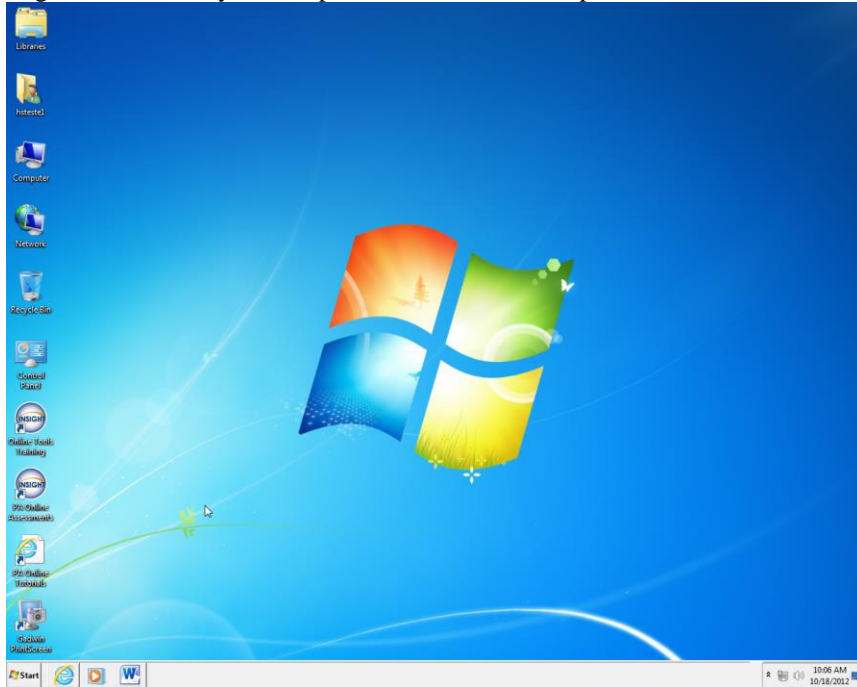
### Setup / Hookup

Make sure you have everything plugged in right. One cable should be going to the monitor and other one should be going to the projector.

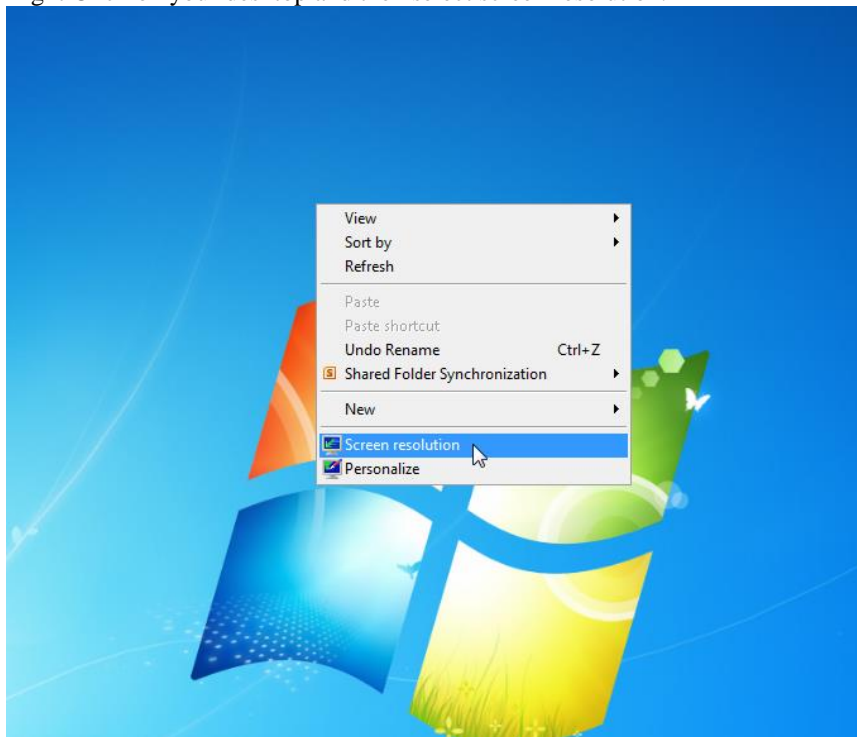


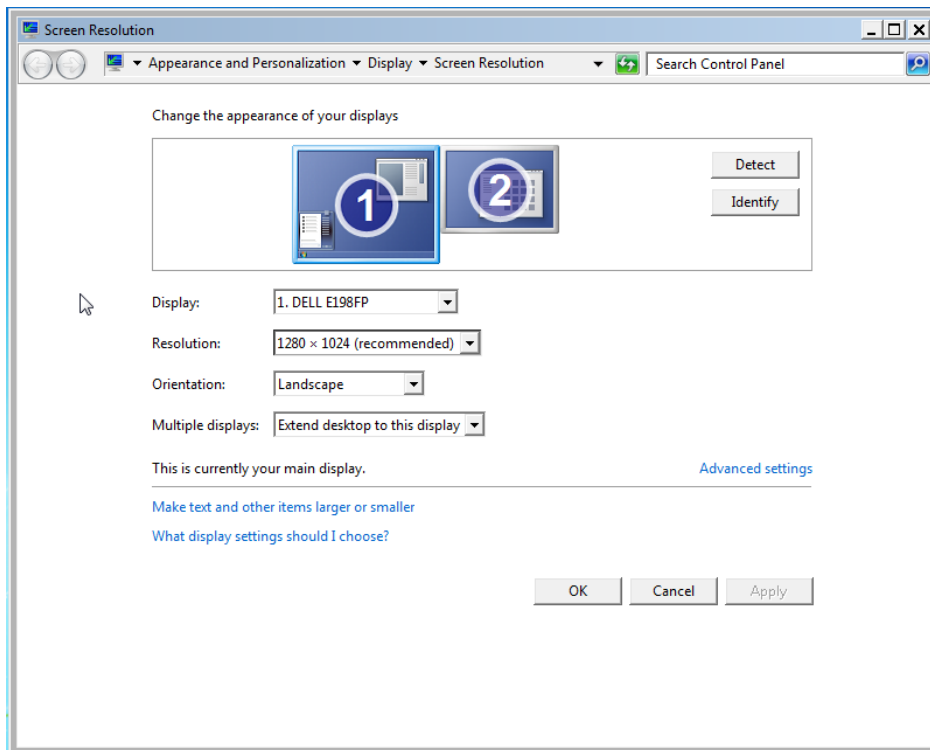
# Computer Setup - Extend

Log in and wait for your computer to show the desktop screen.



Right Click on your desktop and then select screen resolution.





Your monitor will be marked with number **1** as you can see in the picture). This will not show up on the projector screen.

(As you can see the 2<sup>nd</sup> monitor / projector is detected and it is marked with number **2**. This is what will be displayed on the projector.

Click on detect on top right and wait for the computer to find the projector.  
*(If you do not see the projector, please try powering off the projector and back on).*