

# SAYRE AREA SCHOOL DISTRICT TECHNOLOGY TIPS

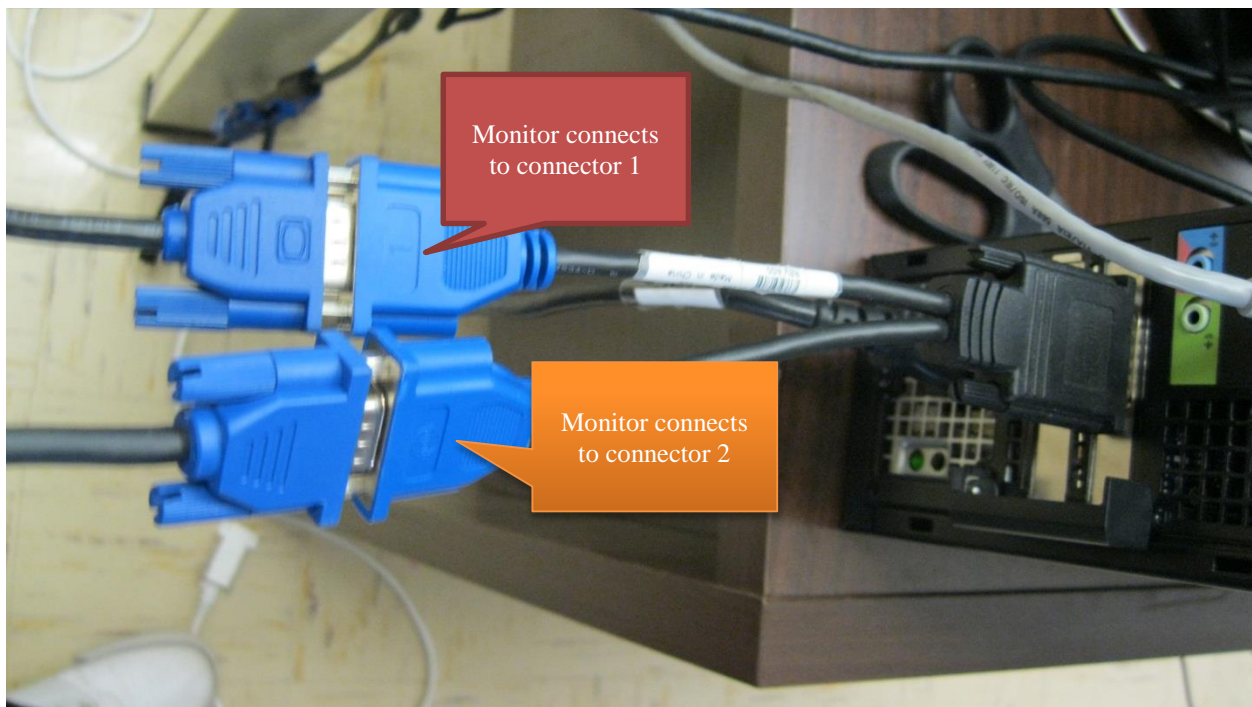
## 1 MONITOR 1 PROJECTOR DUPLICATE SETTINGS

### Purpose

To properly setup and use 1 monitor with 1 computer projector at SASD.

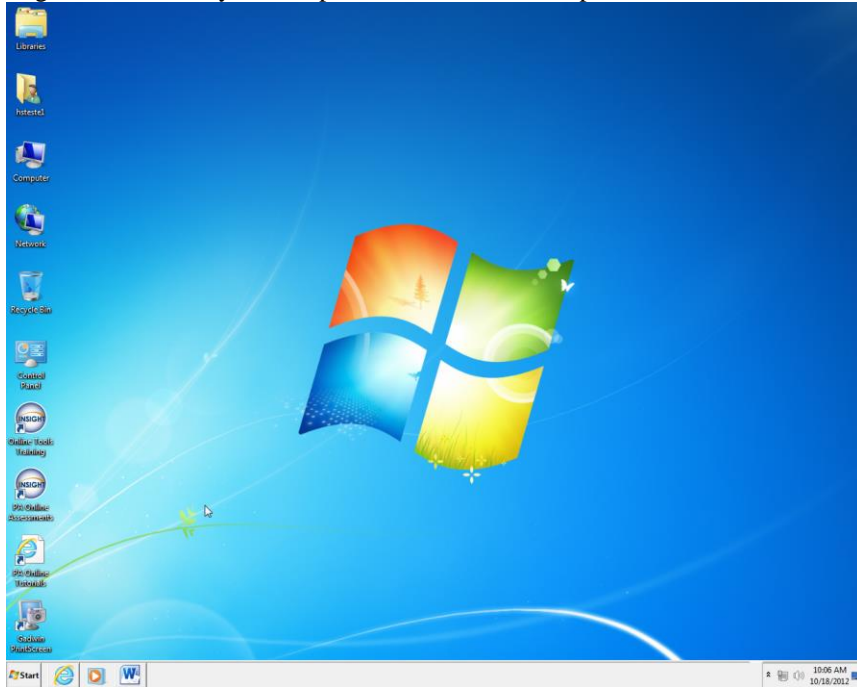
### Setup / Hookup

Make sure you have everything plugged in right. One cable should be going to the monitor and other one should be going to the projector.

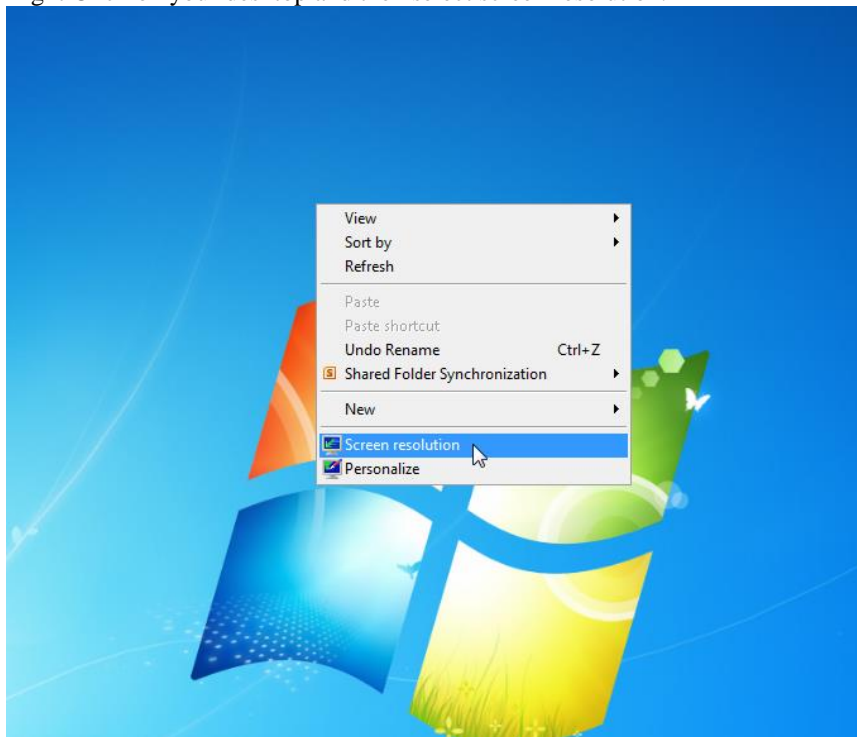


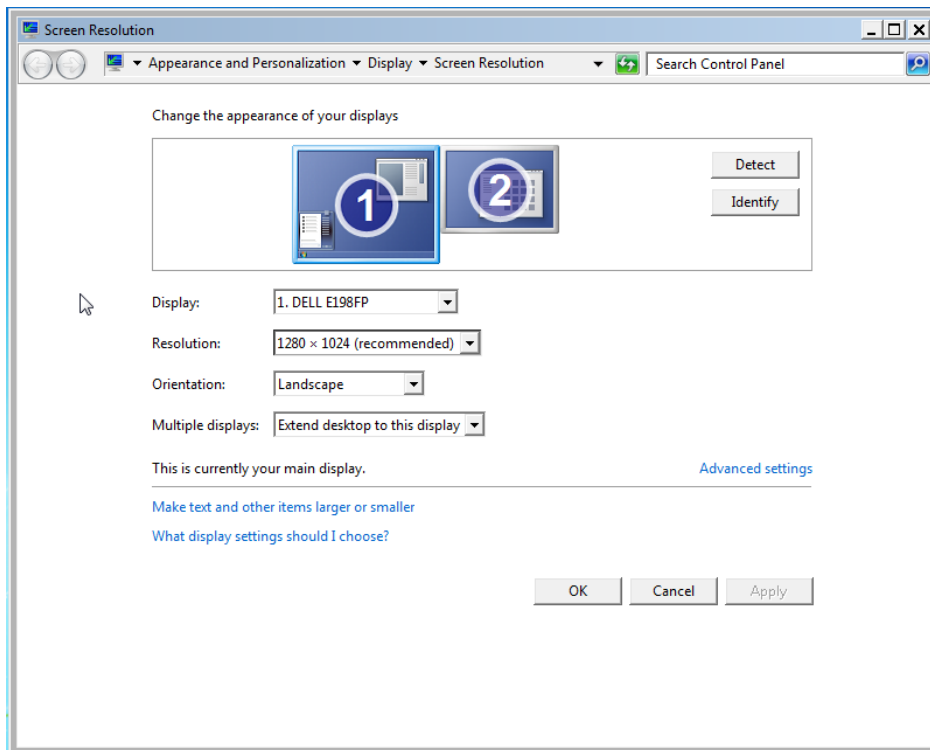
# Computer Setup - Duplicate

Log in and wait for your computer to show the desktop screen.



Right Click on your desktop and then select screen resolution.

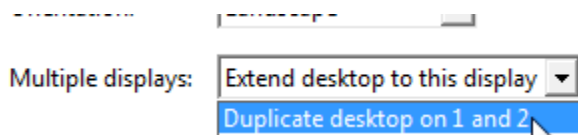




(As you can see the projector is detected and it is marked with number **2**. Your monitor will be marked with number **1** as you can see in the picture)

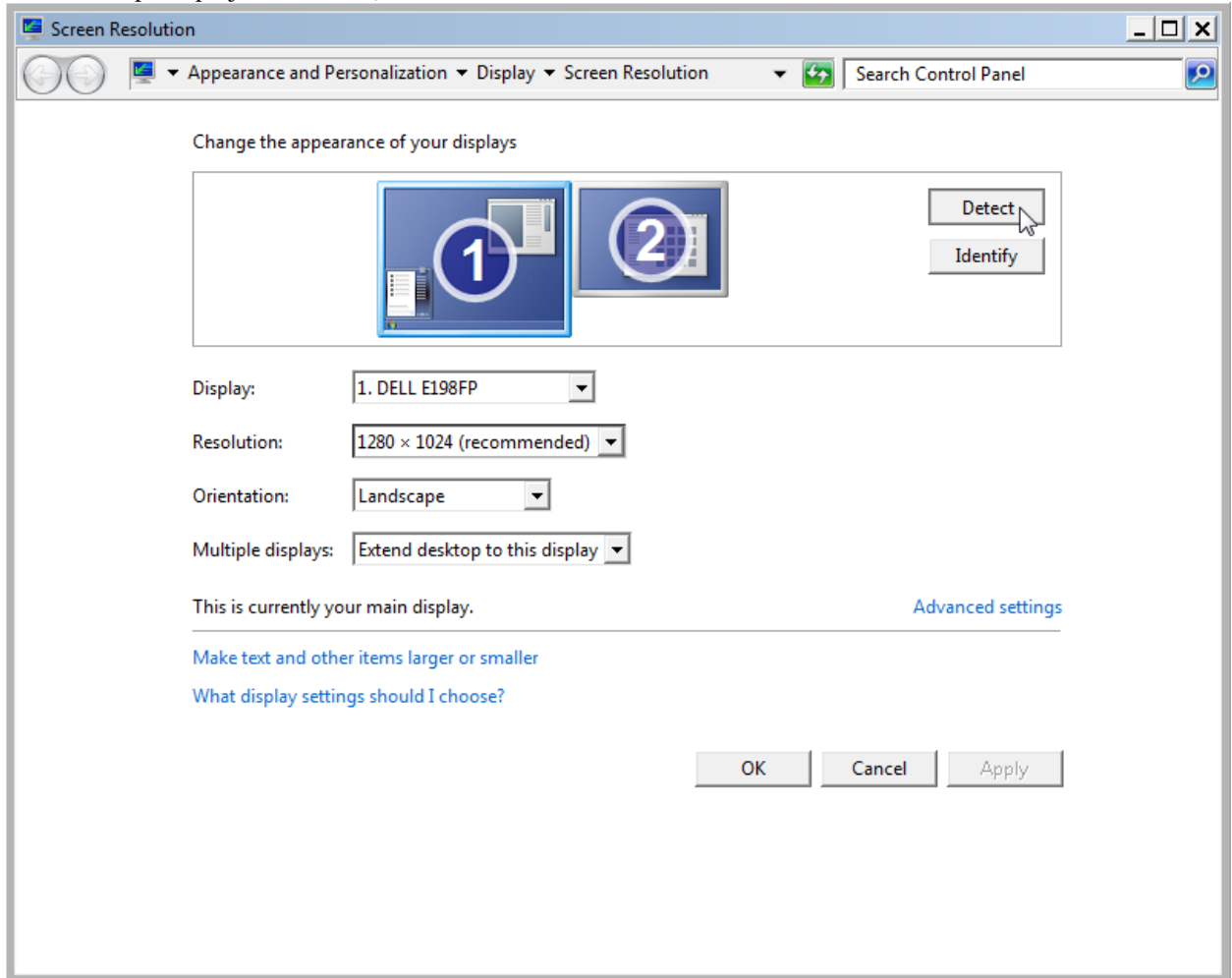
Click on detect on top right and wait for the computer to find the projector.  
*(If you do not see the projector, please try powering off the projector and back on).*

For the multiple displays option, please select Duplicate desktop on 1 and 2. Duplicate will allow what is shown on your screen to be shown on the projector.



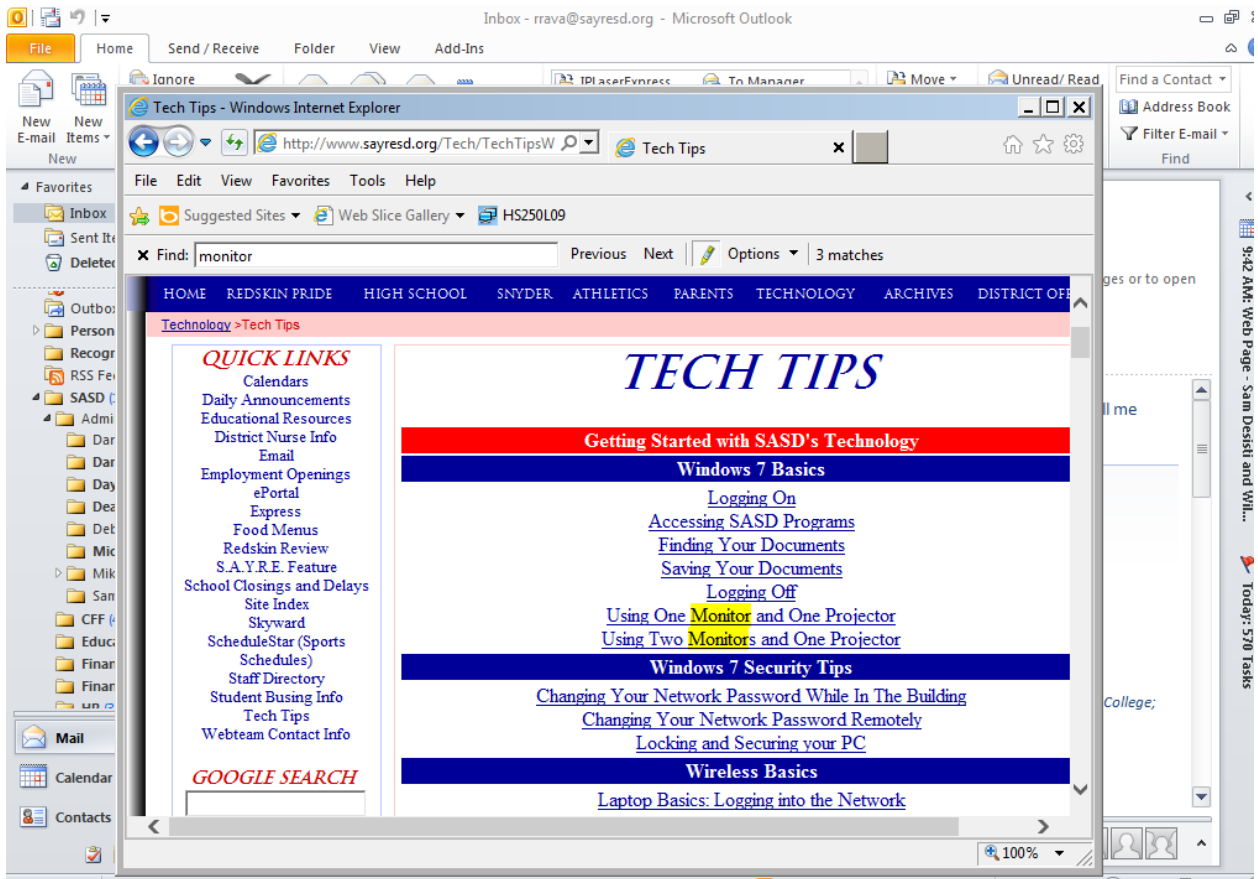
## OPTIONAL: Computer Setup – Extend desktop to this display

If you chose the extend desktop to this display, then you can drag your windows to the projector. Basically you could only show on the projector what you wish by dragging it off the screen (you will not see it on your computer screen but will see it on the computer projection screen).

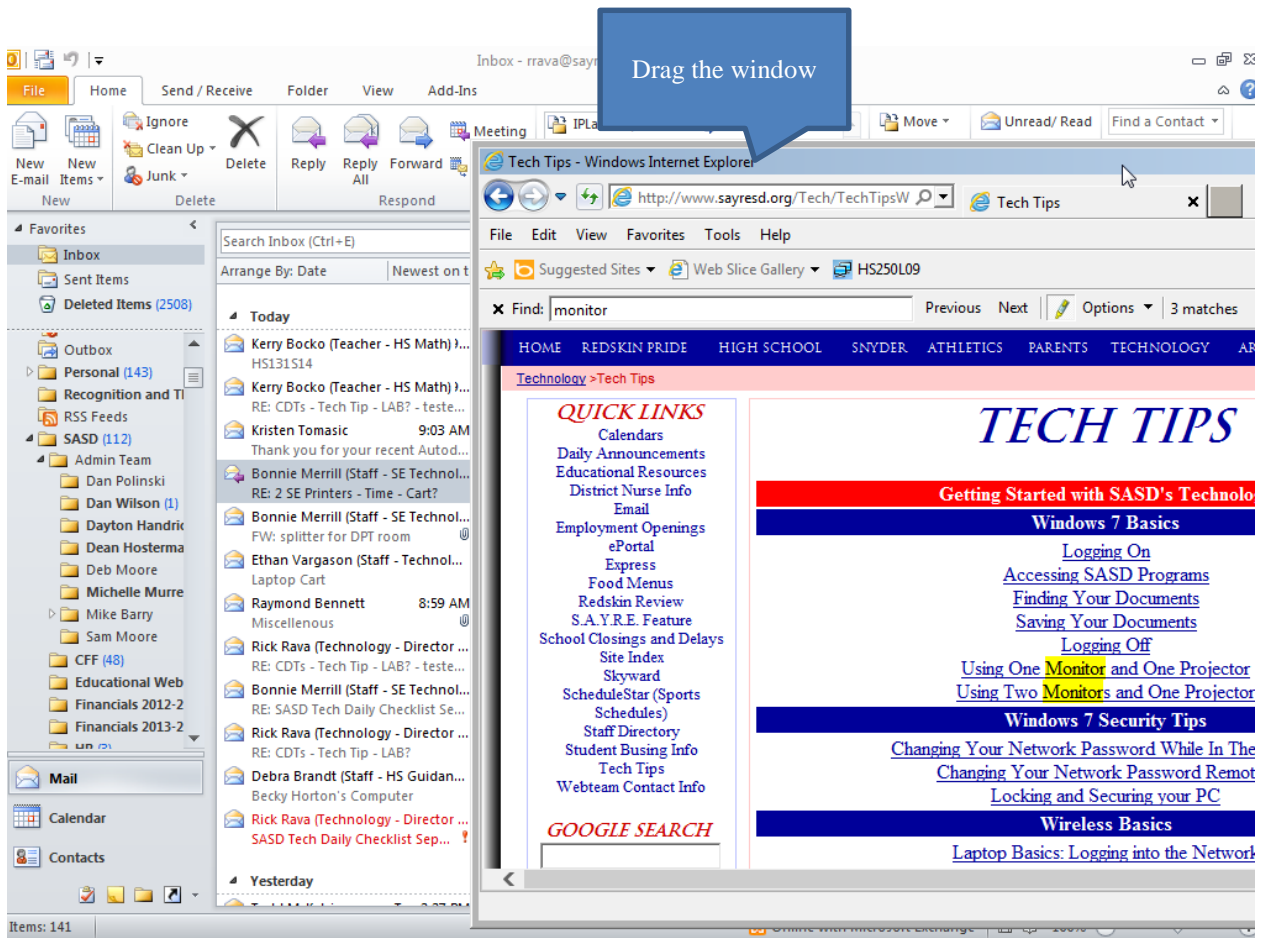


(As you can see the projector is detected and it is marked with number **2**. Your monitor will be marked with number **1** as you can see in the picture)

To move a window, size the window first (not maximized).



Then click in the title area and drag the window



Once you have the window dragged off the computer screen, you will see it fully on the projector

Sample below

Tech Tips - Windows Internet Explorer

http://www.sayresd.org/Tech/TechTipsWindows7.asp

File Edit View Favorites Tools Help

Suggested Sites Web Slice Gallery HS250L09

Find: monitor Previous Next Options 3 matches

HOME REDSKIN PRIDE HIGH SCHOOL SNYDER ATHLETICS PARENTS TECHNOLOGY ARCHIVES DISTRICT

Technology > Tech Tips

**QUICK LINKS**

- Calendars
- Daily Announcements
- Educational Resources
- District Nurse Info
- Email
- Employment Openings
- ePortal
- Express
- Food Menus
- Redskin Review
- S.A.Y.R.E. Feature
- School Closings and Delays
- Site Index
- Skyward
- ScheduleStar (Sports Schedules)
- Staff Directory
- Student Busing Info
- Tech Tips
- Webteam Contact Info

**GOOGLE SEARCH**

Search

only search Sayresd.org

# TECH TIPS

## Getting Started with SASD's Technology

### Windows 7 Basics

- [Logging On](#)
- [Accessing SASD Programs](#)
- [Finding Your Documents](#)
- [Saving Your Documents](#)
- [Logging Off](#)
- [Using One Monitor and One Projector](#)
- [Using Two Monitors and One Projector](#)

### Windows 7 Security Tips

- [Changing Your Network Password While In The Building](#)
- [Changing Your Network Password Remotely](#)
- [Locking and Securing your PC](#)

### Wireless Basics

- [Laptop Basics: Logging into the Network](#)
- [Laptop Basics: Logging in Remotely](#)
- [Connect a PC to the Wireless](#)
- [Connect Apple Devices to Wireless](#)
- [Turning the Wireless On for a Netbook](#)
- [Using a Dell Netbook Wireless Cart](#)
- [Laptop Basics \(Wireless Log On and Shortcuts\)](#)

## 3D Printer - Shop Printer

Now the window is seen on the projector screen