

SAYRE AREA SCHOOL DISTRICT TECHNOLOGY TIPS

LAPTOP BASICS (OUTSIDE THE SAYRE NETWORK)

Purpose

To go over the basics on how to log in to a SASD Laptop outside the SASD network (ex from home).

Logging in Locally

To login outside the SASD network (ex. At home) you will need to do the following:

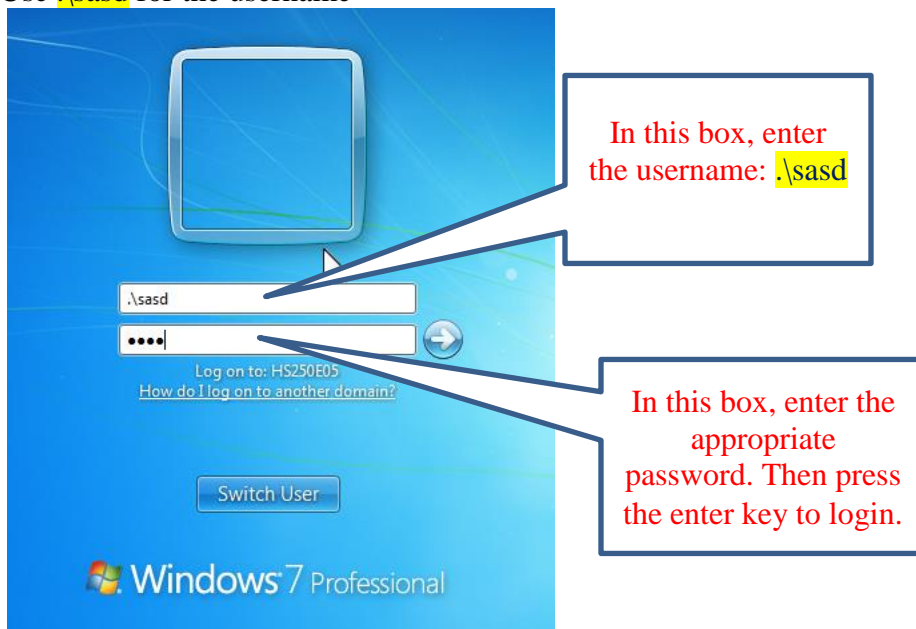
Username: `.\sasd`

Password:

Enter the appropriate password for the `sasd` account

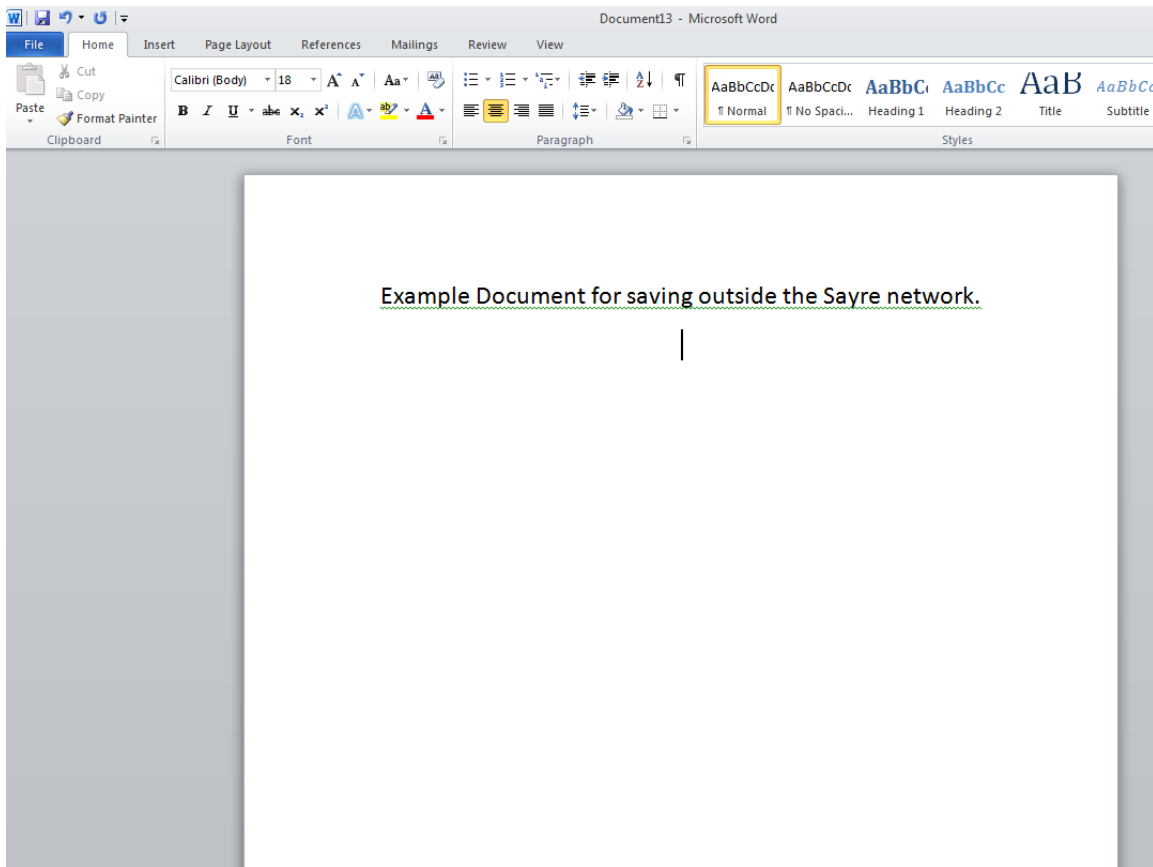
Please note: since `sasd` is a local account you will need to switch from the domain to the local computer:

Use `.\sasd` for the username

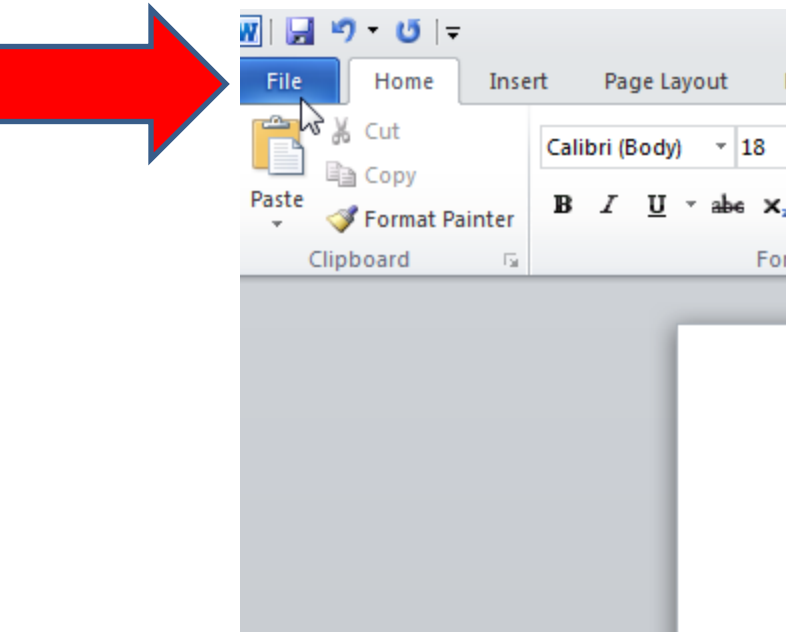


Using this account at home, you have access to all programs and applications that you would normally have at the school.

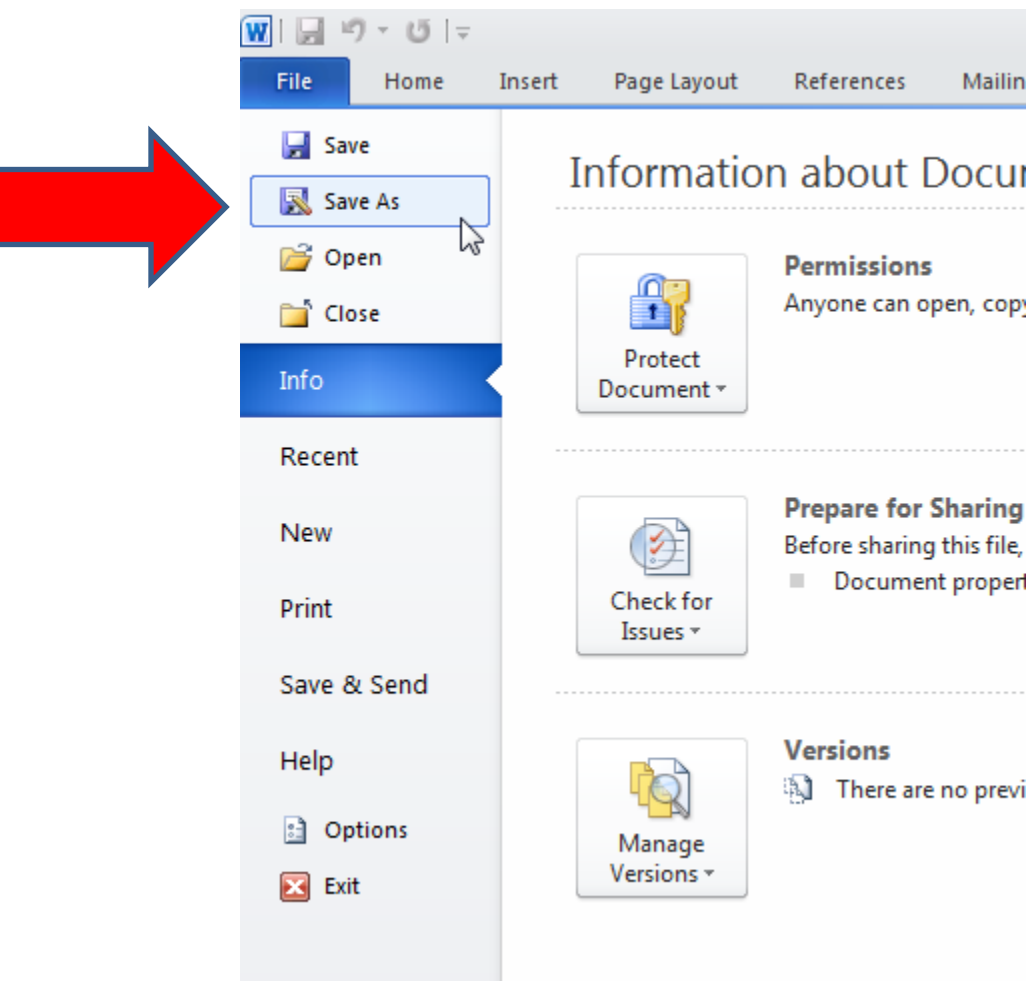
For example, if you want to work on a word document at home take the device home and use the above login to get into the network. When you save your document, don't forget to save to a flash drive so you can bring it back to the school to save onto the school's network. Files will not be backed up if not saved while in the network (at school).

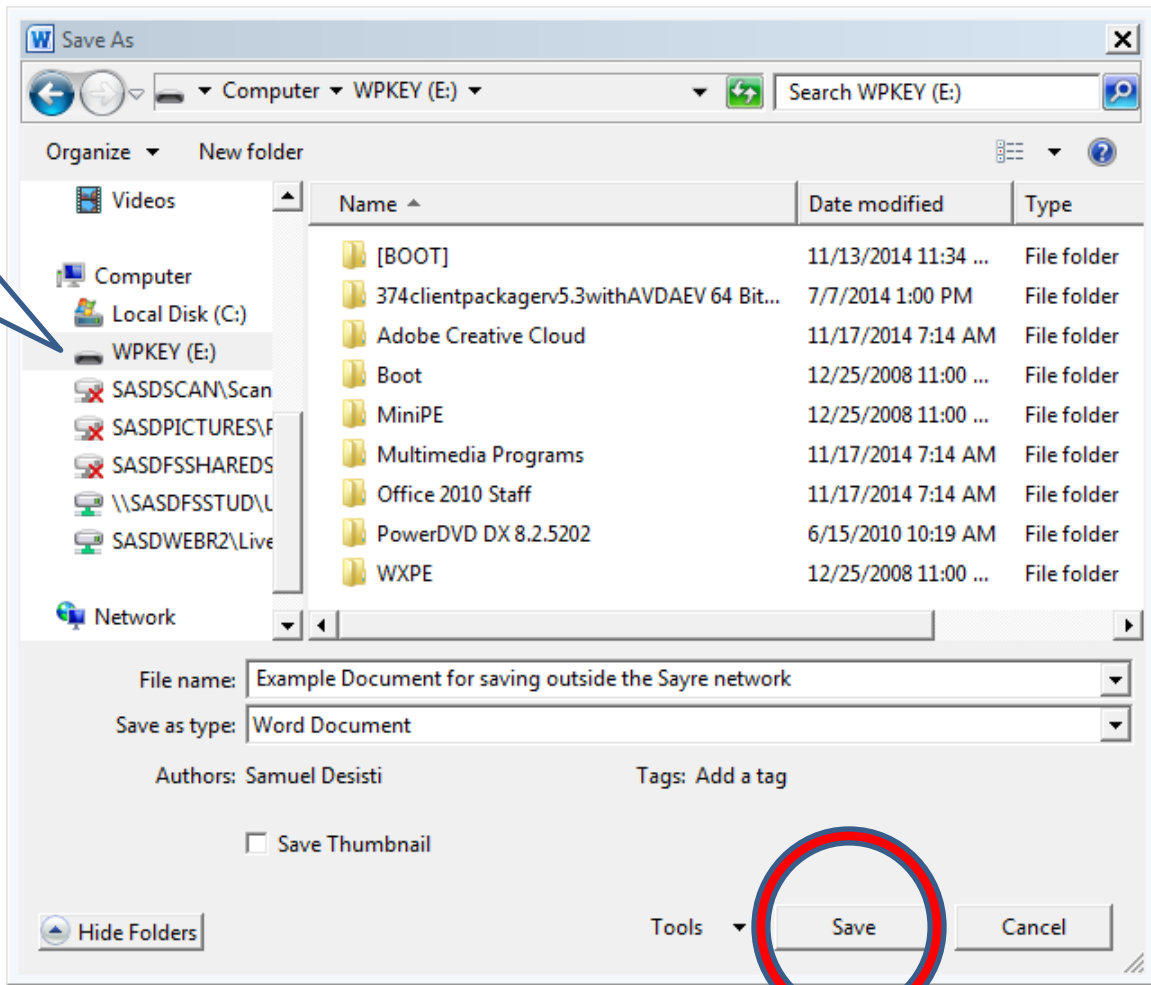


This is an example of work that one could do outside of the network.



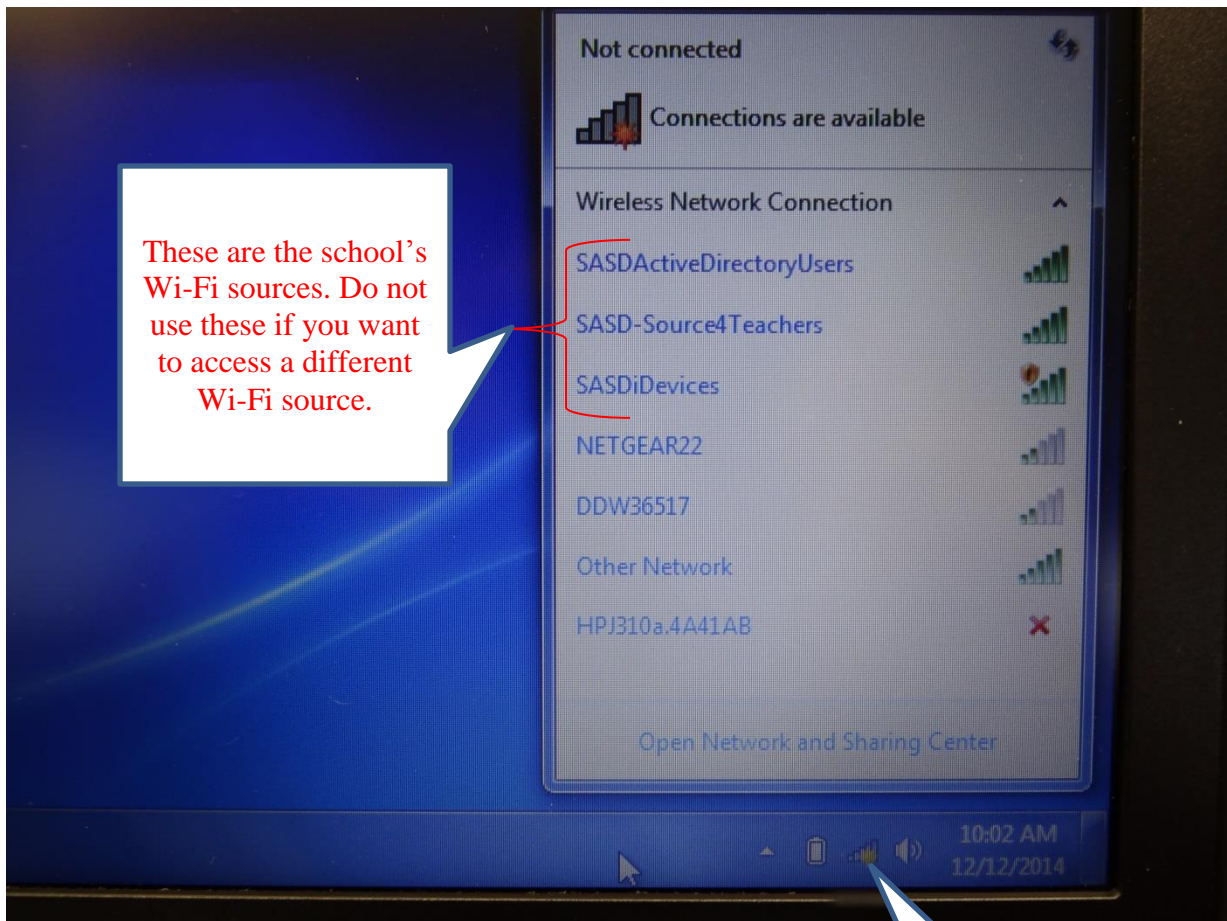
Click File – Save As in the word document.





Then save it into the flash drive that you have plugged into your computer. You can then remove the flash drive and take it to the school to back up onto the servers.

If you are using a SASD device at home, you may also access other Wi-Fi points. To do this, log on with the “.\sasd” account. Then when the desktop screen appears, change the Wi-Fi to the desired source.



These are the school's Wi-Fi sources. Do not use these if you want to access a different Wi-Fi source.

Click here in the bottom right corner of the screen to access the Wi-Fi settings.