

SAYRE AREA SCHOOL DISTRICT TECHNOLOGY TIPS

KURZWEIL BASICS

Purpose

This handout is to briefly instruct how to use the Kurzweil System in the HS Learning Support Room 258.

Kurzweil allows students that have reading difficulties to have the computer read materials to them.

How Do I Start Up Kurzweil?

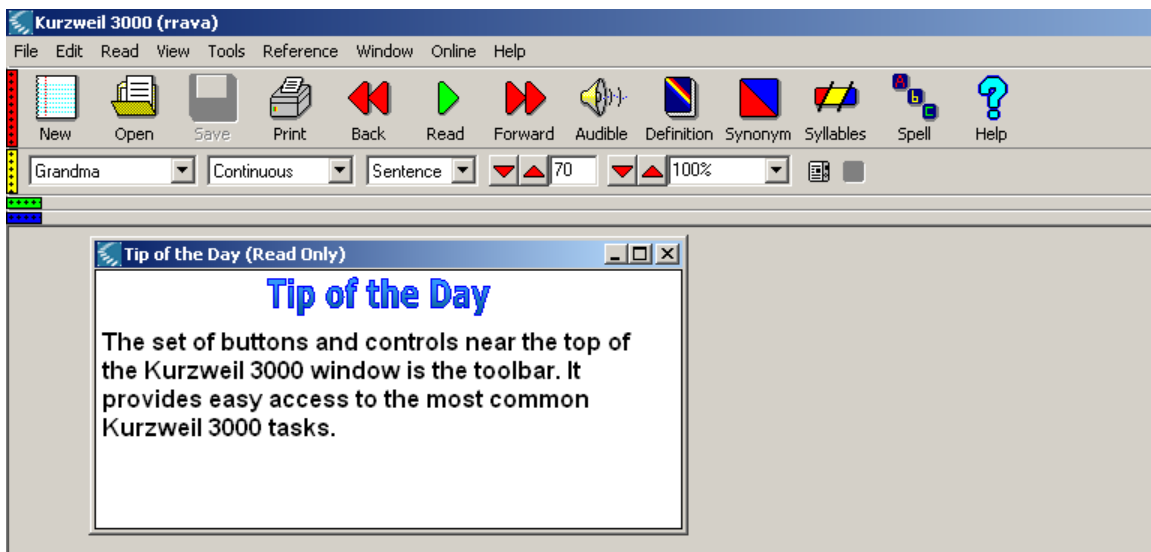
It's quite simple, just do the following:

From HS Room 258 – click on the Start button

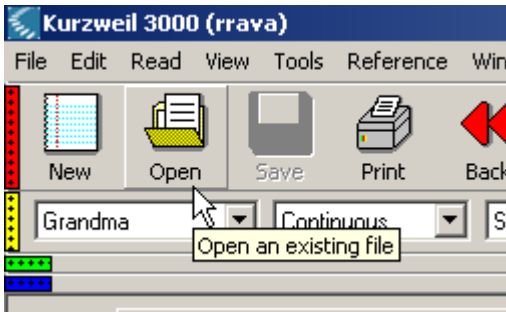
Select the SASD Kurweil – then the Shortcut to Kurzweil 3000



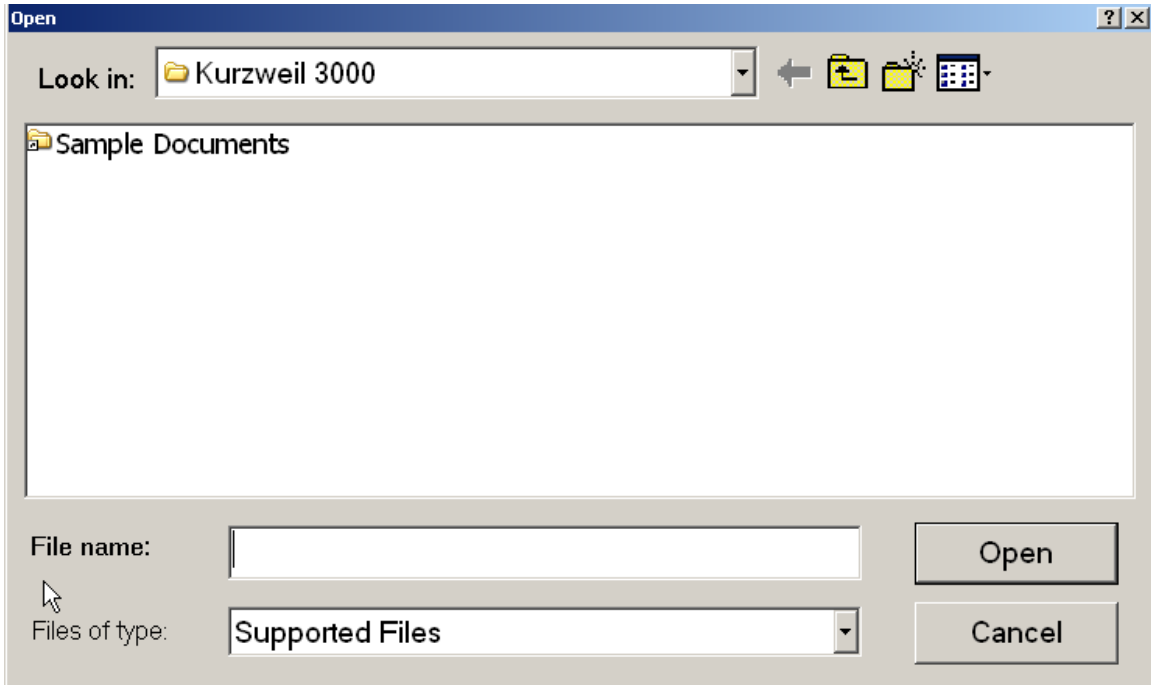
The following program starts up



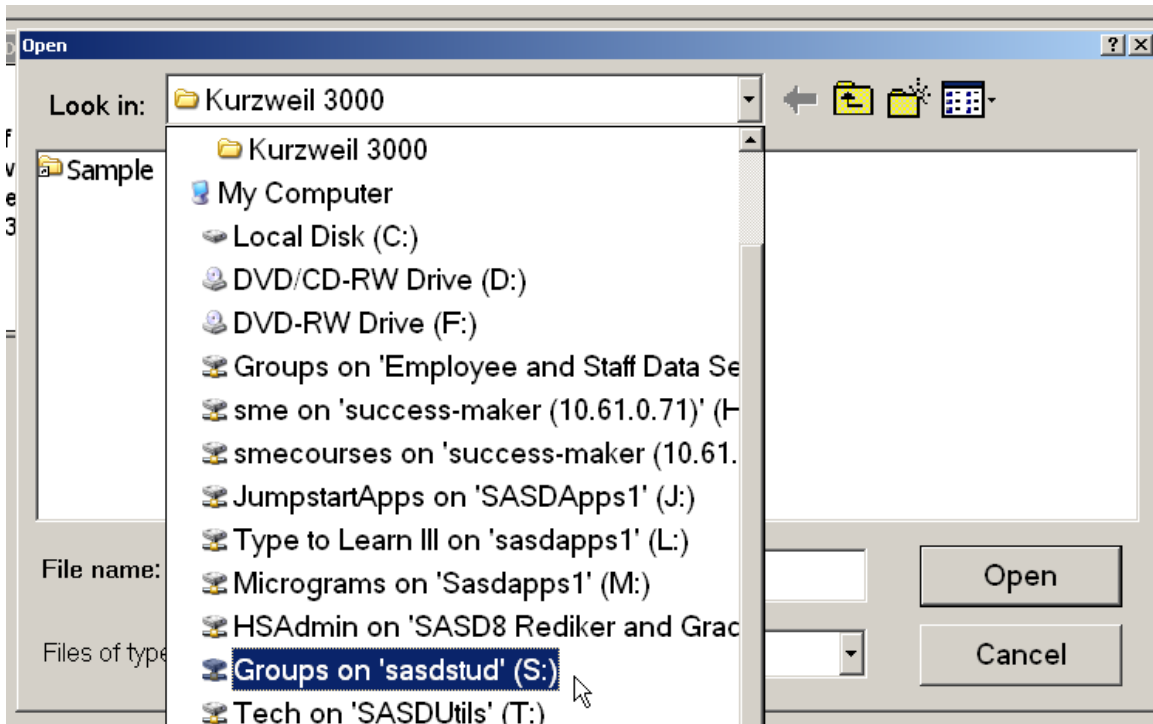
A student can do the following to have Kurzweil read a document:



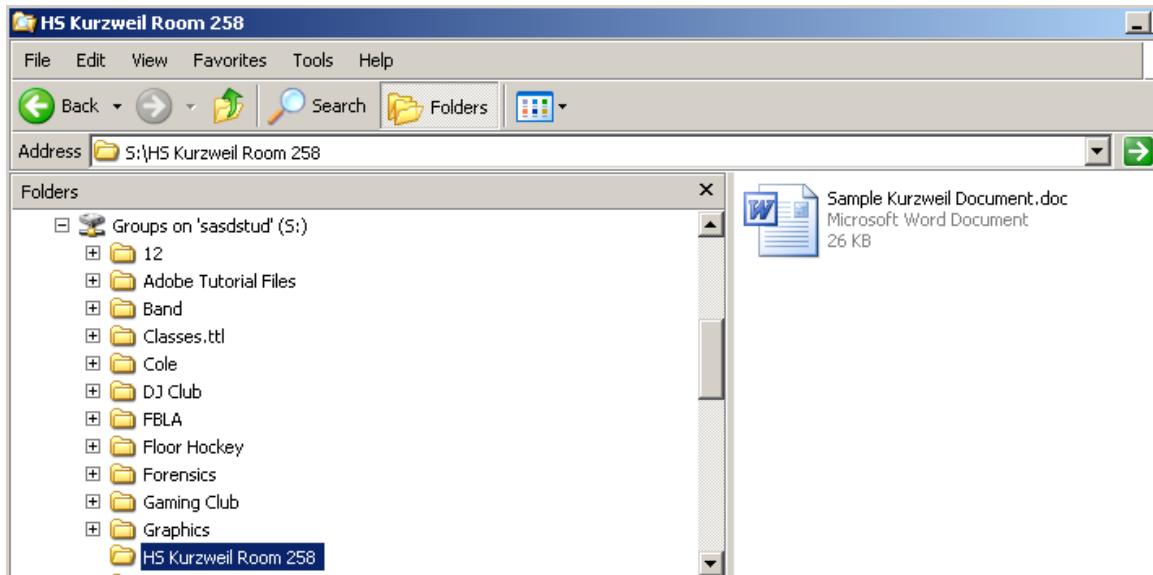
Click on the Open icon



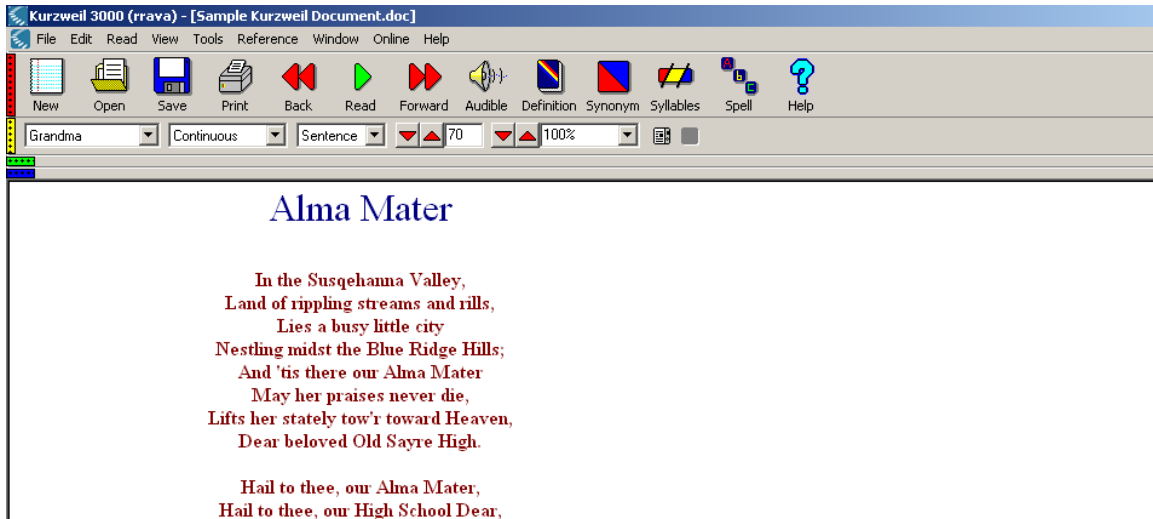
Click on the down arrow by the Kurzweil 3000 and navigate to the S drive



Under the S drive – navigate to the HS Kurzweil Room 258



Open the desired document (in this example – I opened the Sample Kurzweil Document.doc)



Click on the Read button

The student will now have the document read to him/her.

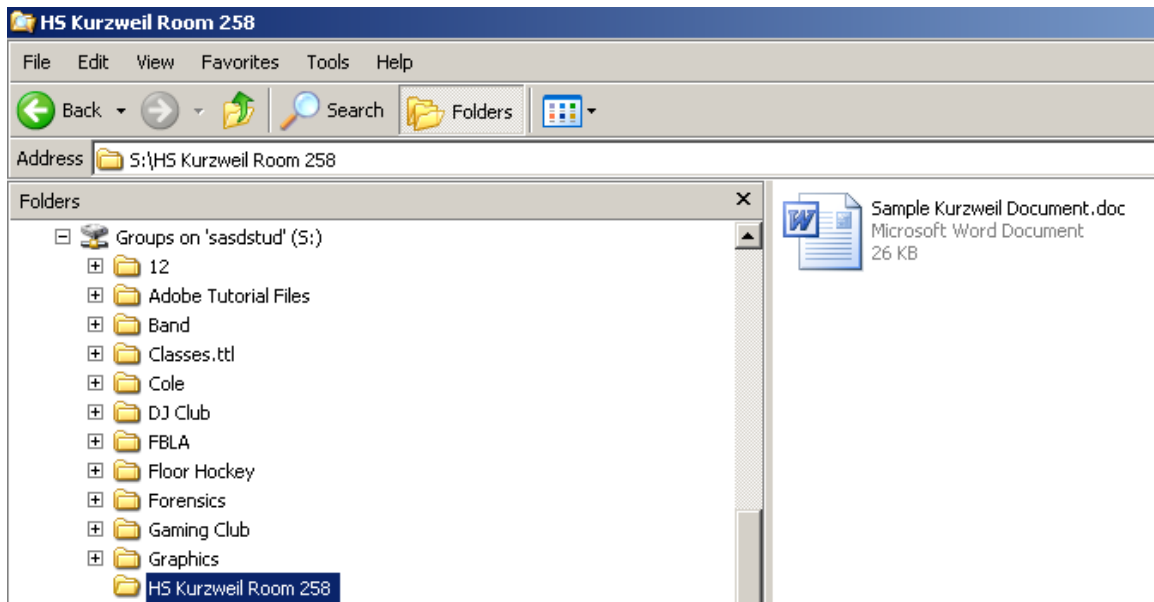
How Can a Teacher Create New Kurzweil Materials?

Any material that is in computer format (ex. MS Word, web pages, etc) can be read by Kurzweil.

You may need to copy the material to Word, scan it, or even type it.

Where should Kurzweil Materials be stored?

HS Resource Room teachers can store the materials in the S:\HS Kurzweil Room 258 folder (see sample below). Please note that the students have read only access to these materials while the HS Resource Room teachers can edit and save materials to this folder).



Simply save your documents to the above location and the students can then access them.