

SAYRE AREA SCHOOL DISTRICT TECHNOLOGY TIPS

INSTALLING KURZWEIL AND ADDING TEACHER

Purpose

To install the Sayre Area School district version of Kurzweil.

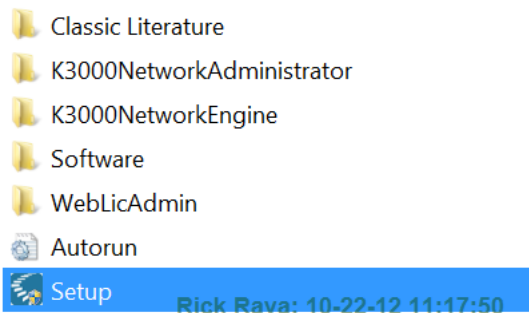
Please Note: This procedure works with Windows 7.

Procedure

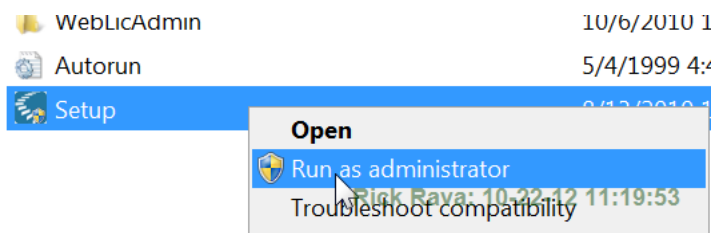
Insert the DVD and you will get the screen below.

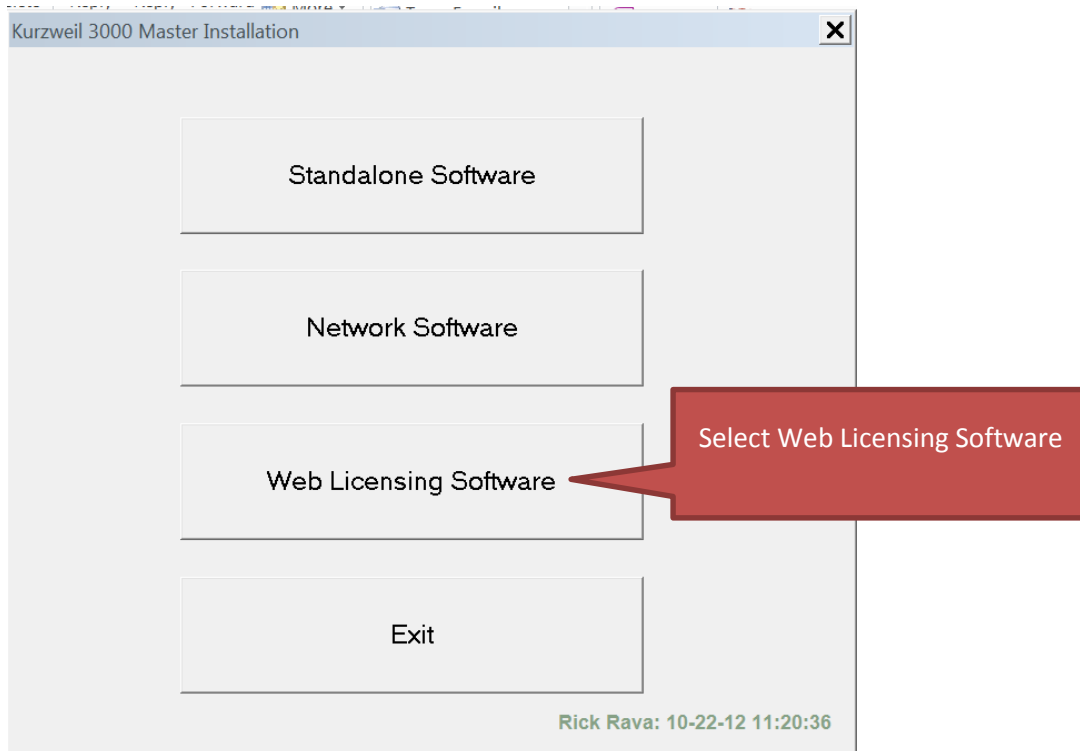
If you do not have a DVD with Kurzweil installed on then please contact the SASD Tech Office for help getting a DVD.

Insert the DVD and install the “Kurzweil 3000 v.12 school bundle”

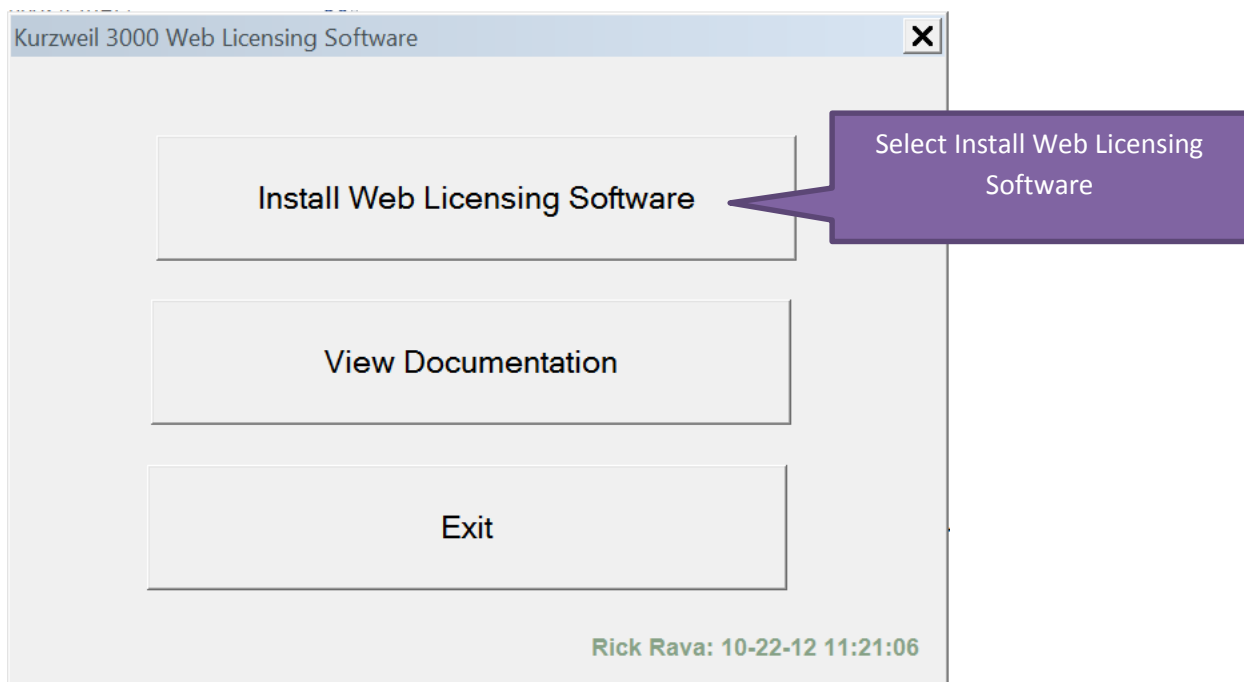


Right mouse click on Setup and Run as Administrator

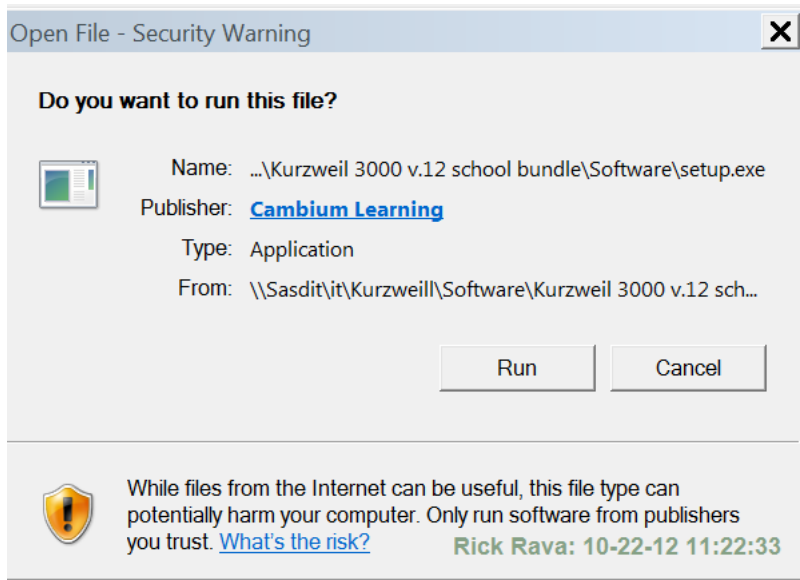




Select Web Licensing Software



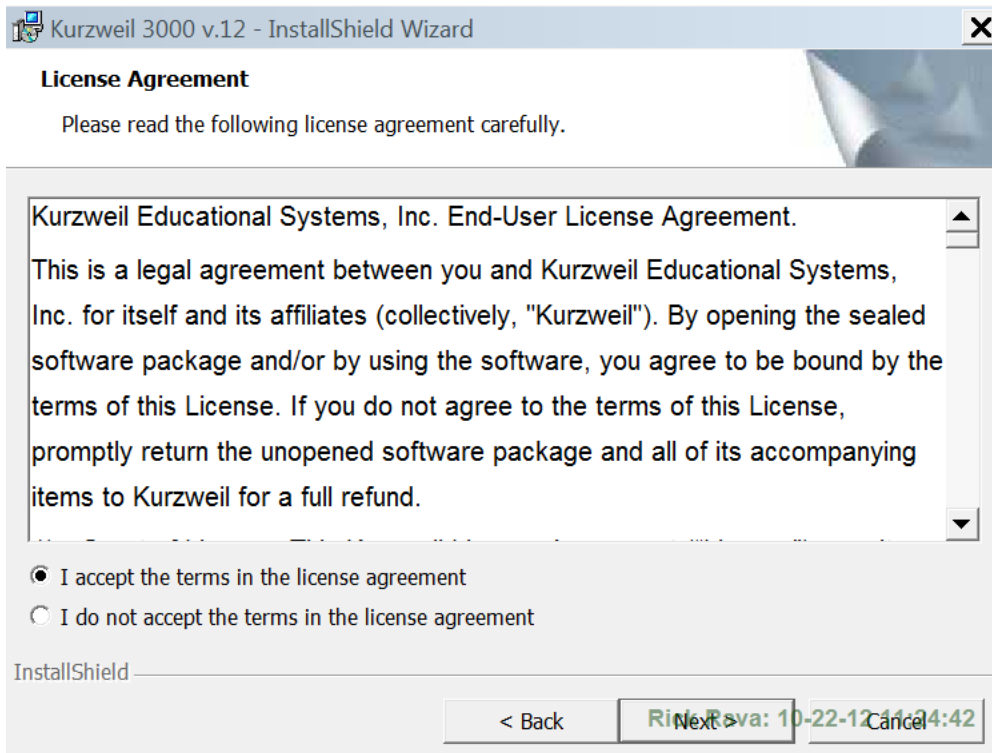
Install Web Licensing Software



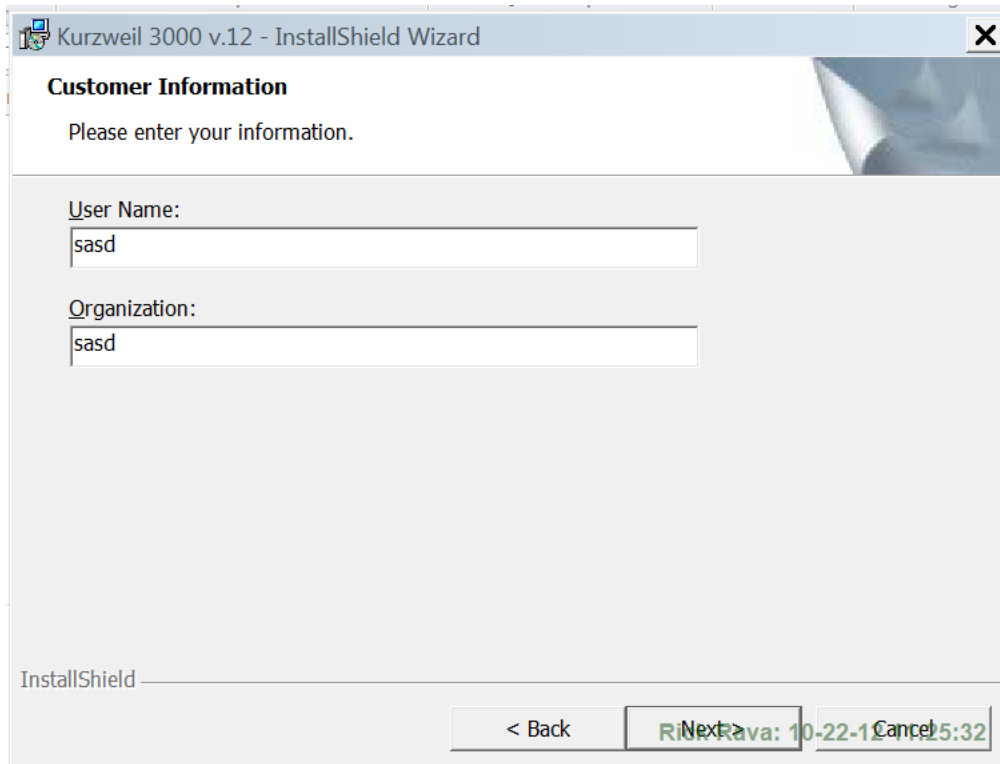
Run



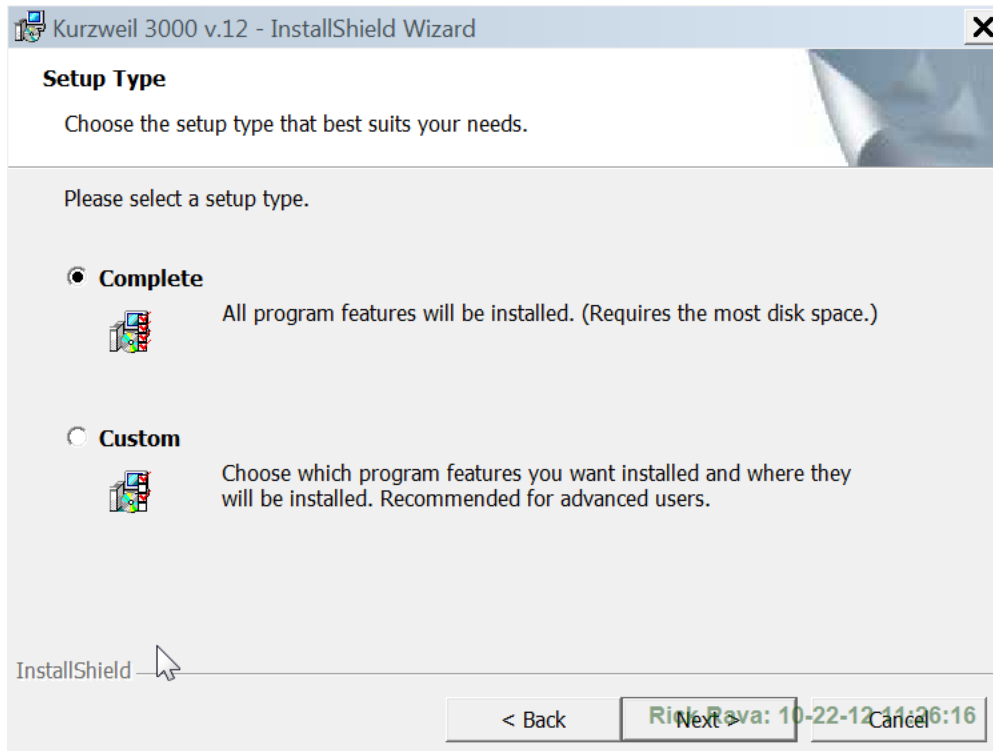
Next



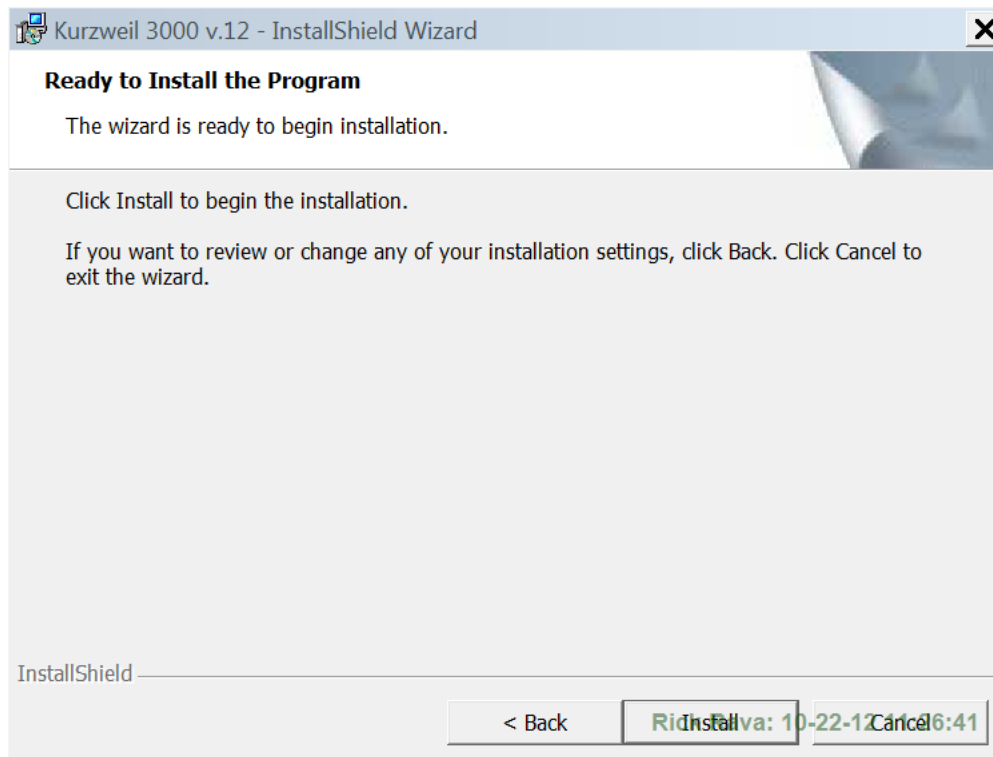
Click on Accept and then next



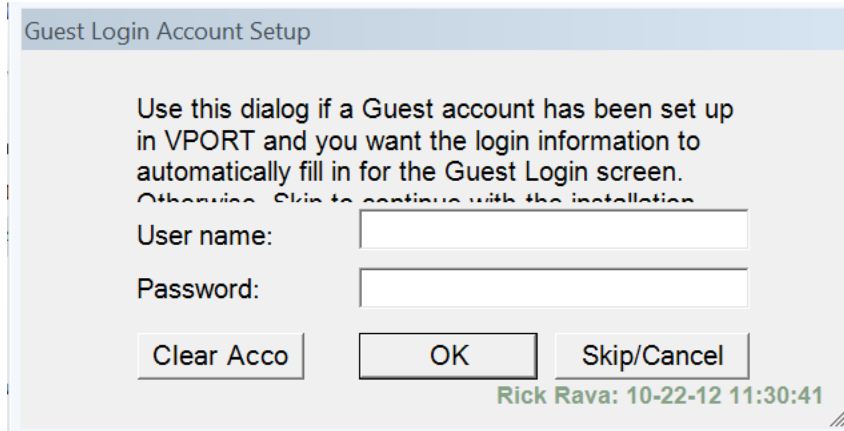
Next



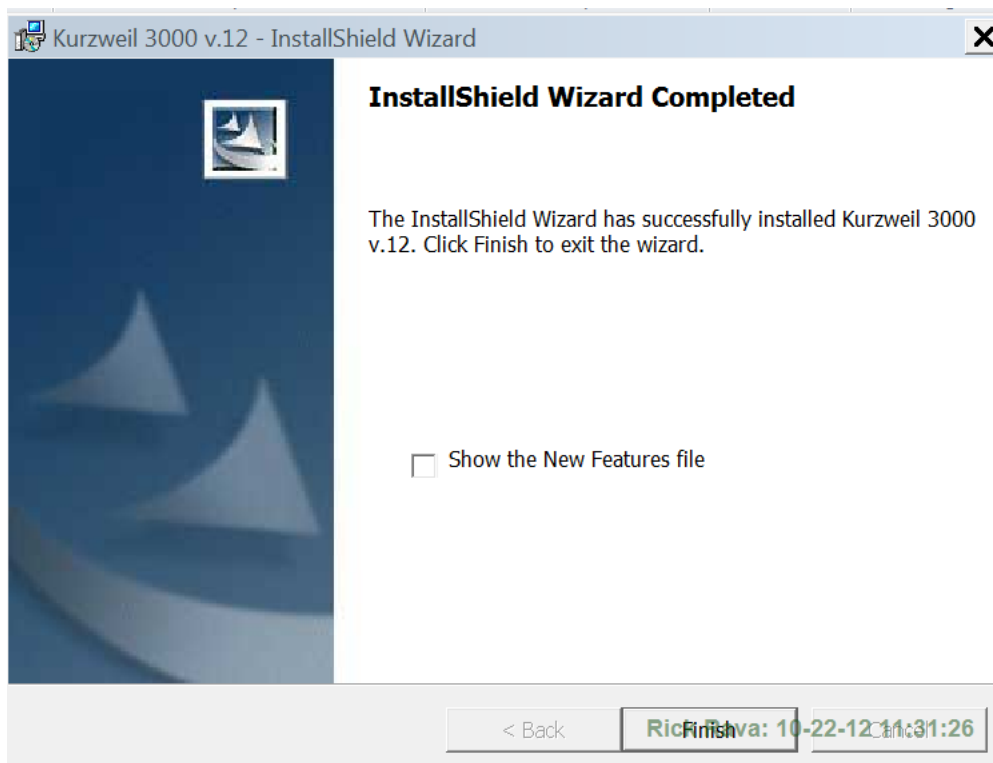
Select Complete and Next



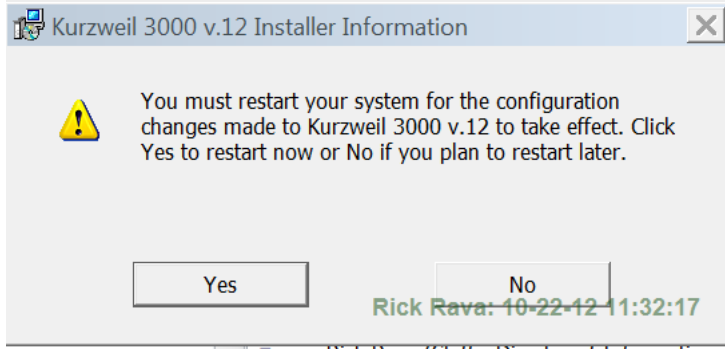
Then it will install for a few moments.



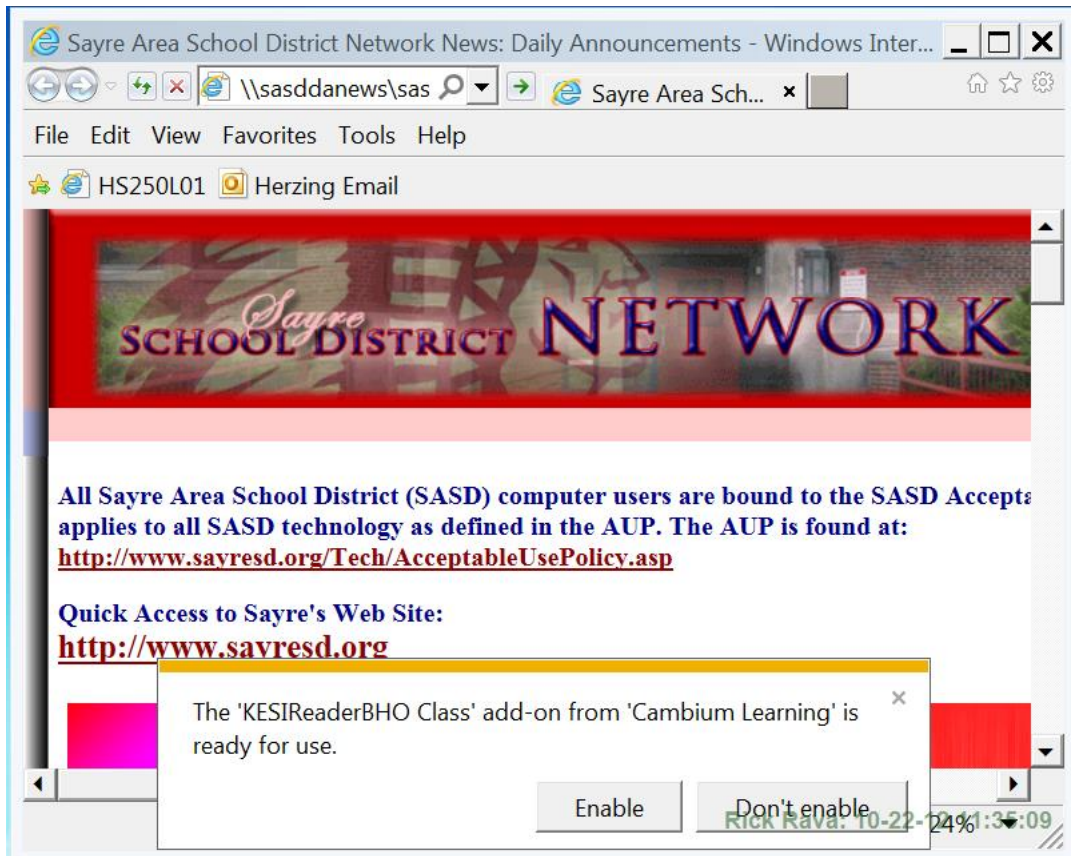
Then I skipped/canceled for a guest



When you choose finish it will prompt you to restart. You should restart.

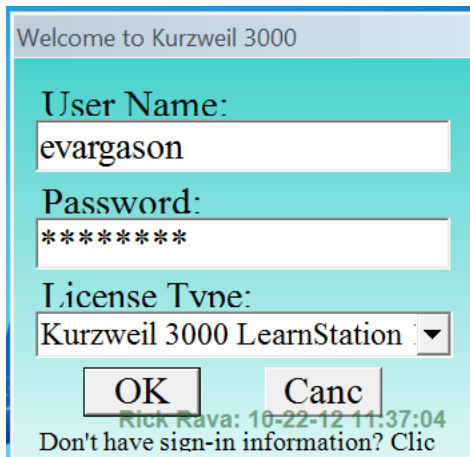


After rebooting

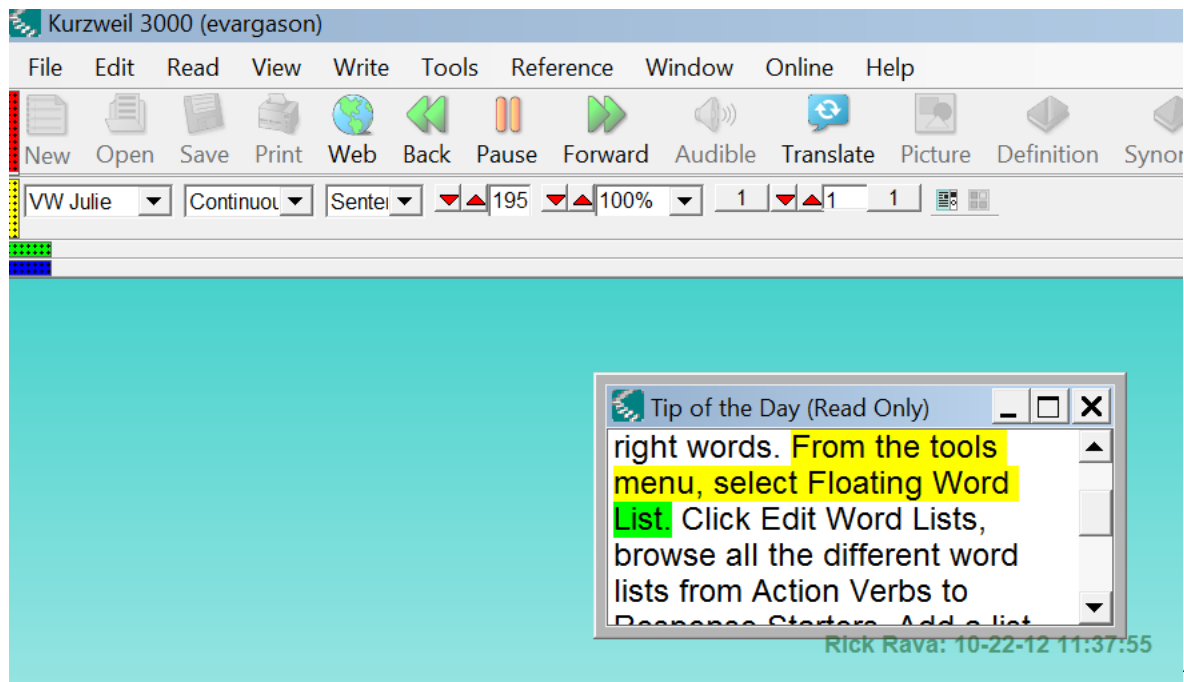


Enable

Now test



OK



With the Tip of The Day present, just click on Read – it will read the words to you

After installing the program a student must ask the teacher to make them an account so they can log in.

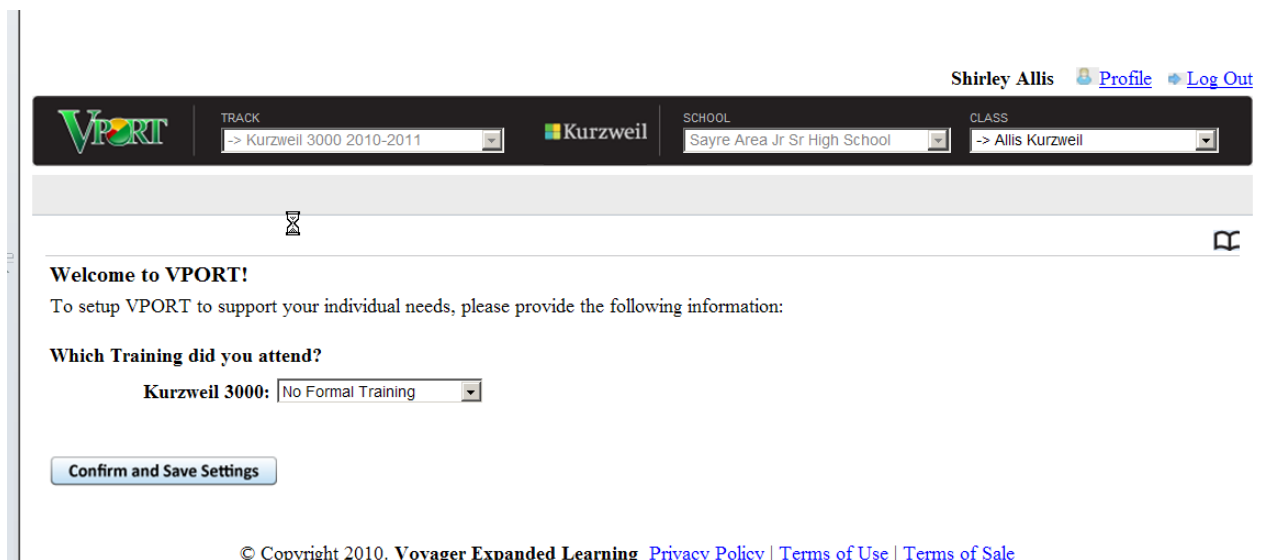
To create a student account log in below.

<https://secure.vport.voyagerlearning.com/vip/> **This is the site you will want to log into to be able to change teachers and classes as well as students!!!!**

I have had trouble with the site being down or really slow to login that means you have to wait until they fix the problem. You will get a blank screen. Usually in about 10 minutes the site is back up and working.

You can login with an admin account or teacher account

If you log in as admin account you will be able to add teachers through the second tab at the top.



Choose the type of training you received. Then Confirm and Save Settings.

Ethan Vargason (Staff - Technology Specialist) Page 9 of 10

Revised: 7/8/2016

T:\TechTips\Kurzweil\Installing Web License of Kurzweil 3000 Version 12.docx

A teacher that has logged in now can edit the student list in the specific class.

Teacher usernames and passwords will be viewable at a document called Kurzweil Teacher Info located on the T Drive under the Kurzweil folder.