

SAYRE AREA SCHOOL DISTRICT TECHNOLOGY TIPS

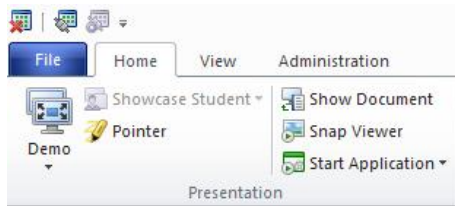
END USER – BASICS - REMOTING VISION STUDENT PCs FROM MASTER

Purpose

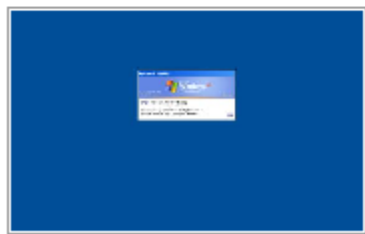
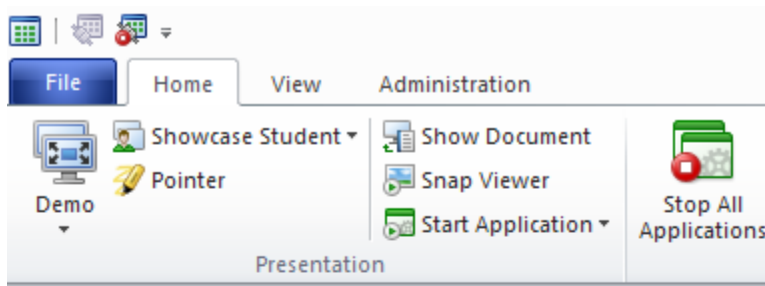
To remote Student PCs from the Master using Vision (v.7).

Controlling the client PC

Restart the **client** machine that had Vision installed, if you have not already done so since installing the program. Open up Vision on the Master.



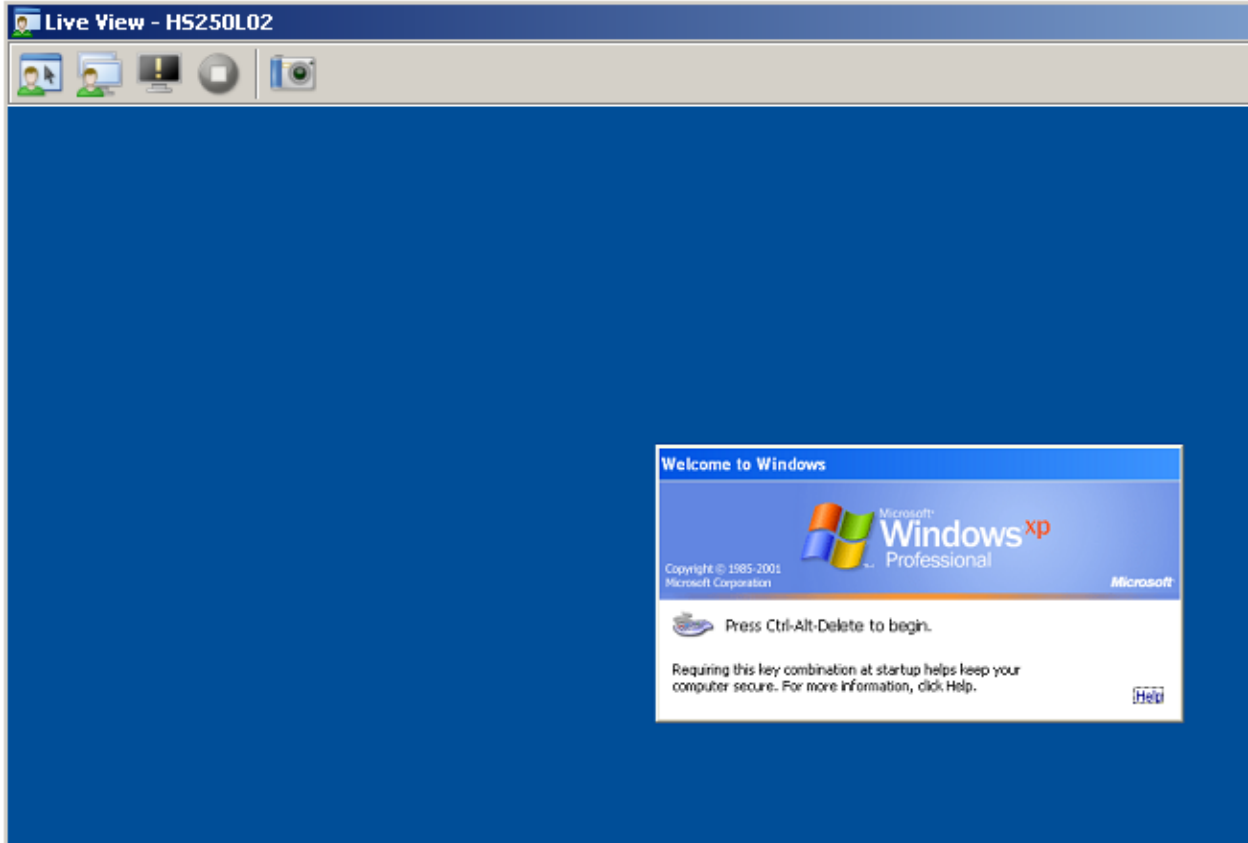
Once the machine has rebooted, it should be visible in the Vision classroom

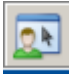



HS250L02


Double click the computer

Double click again inside the window once it expands



To remote control, click  (you can also double click the window to remote control). The top part of the window will turn red (see screens below)

To showcase students, click  (you will need to have more than one student computer in the Vision classroom for this to work)

To cause a blank screen, click 

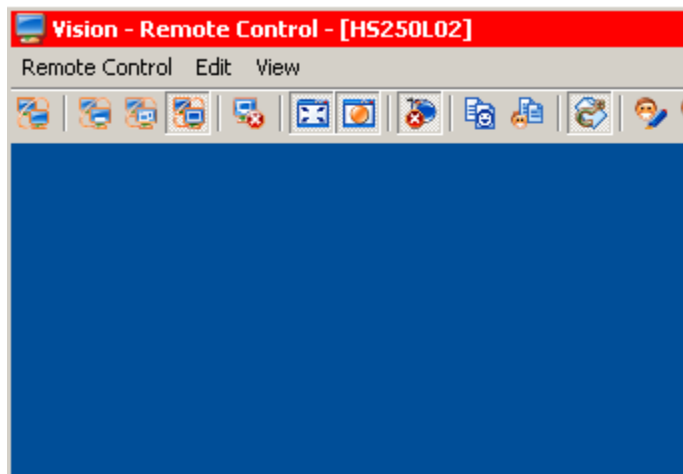
To stop a mode, click  (this is greyed in most cases)

To take a screenshot, click 



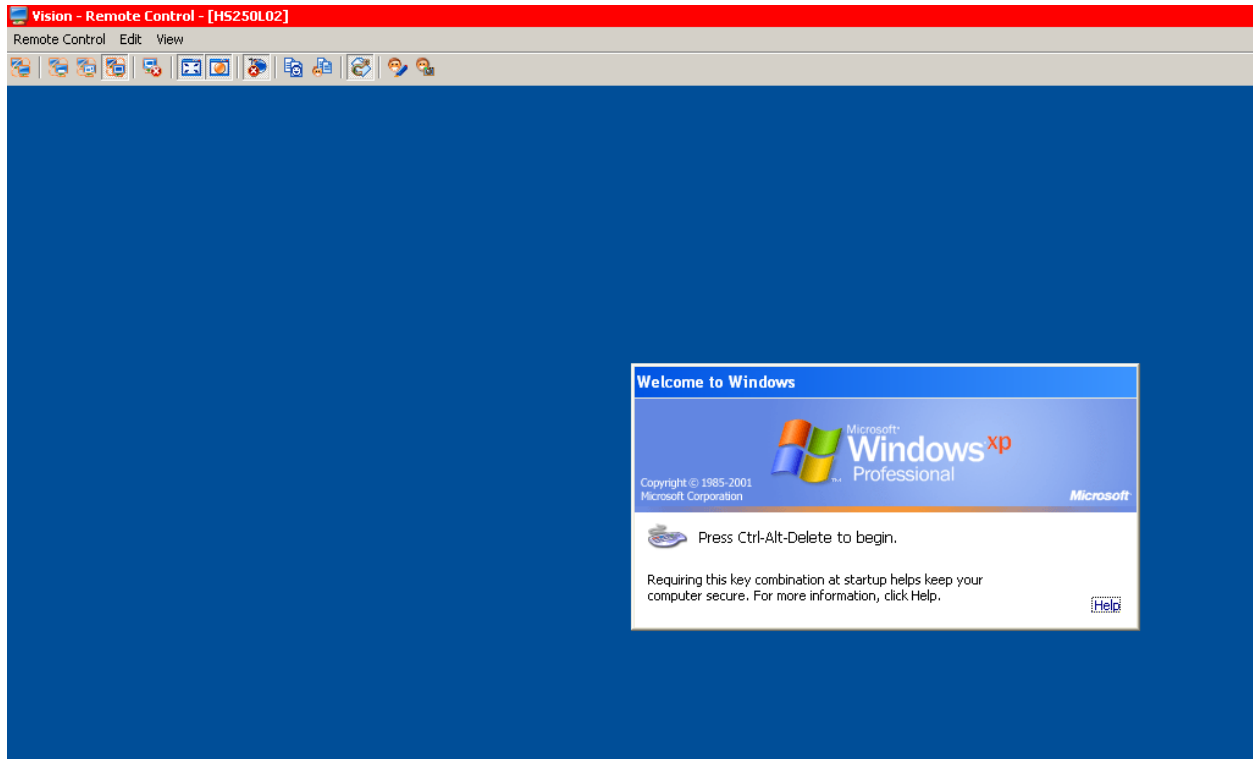
This will appear when you click on the snapshot feature

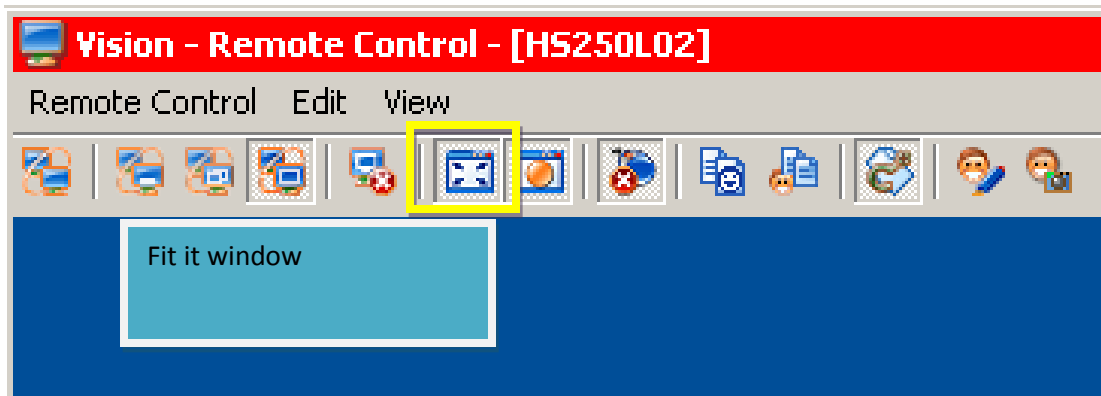
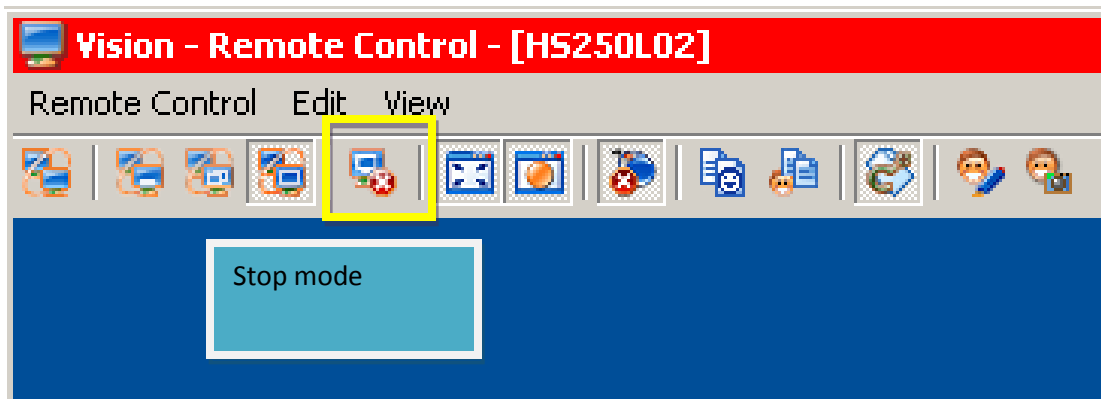
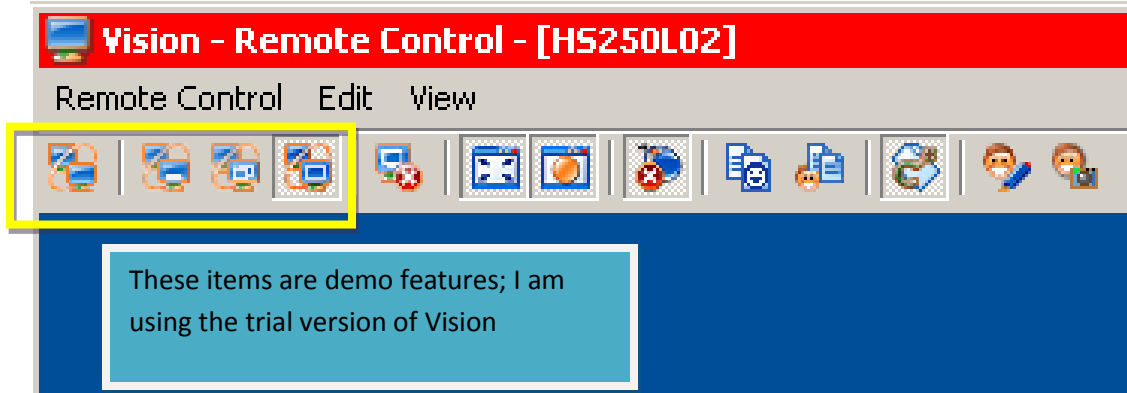
Remote control by either double clicking the window or clicking

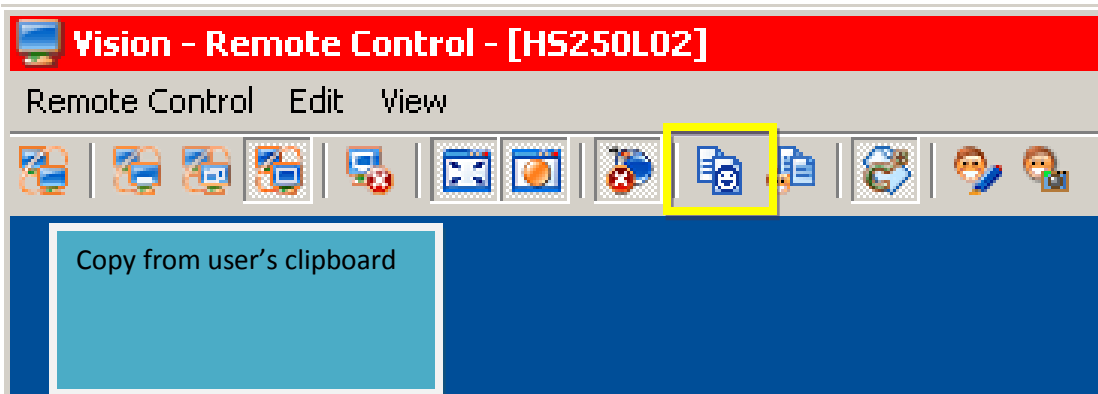
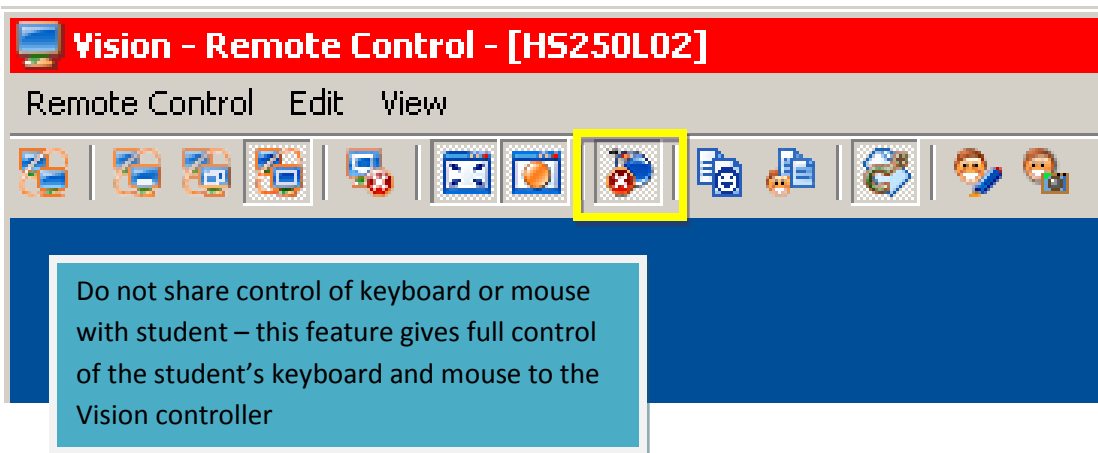
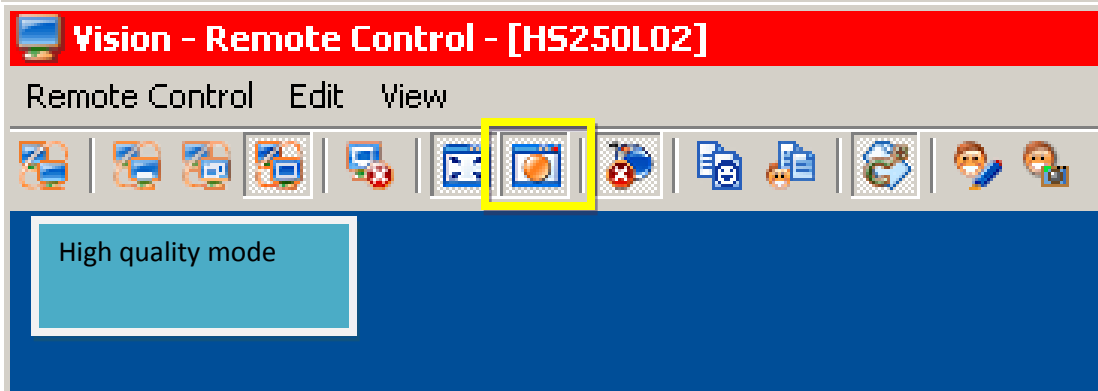


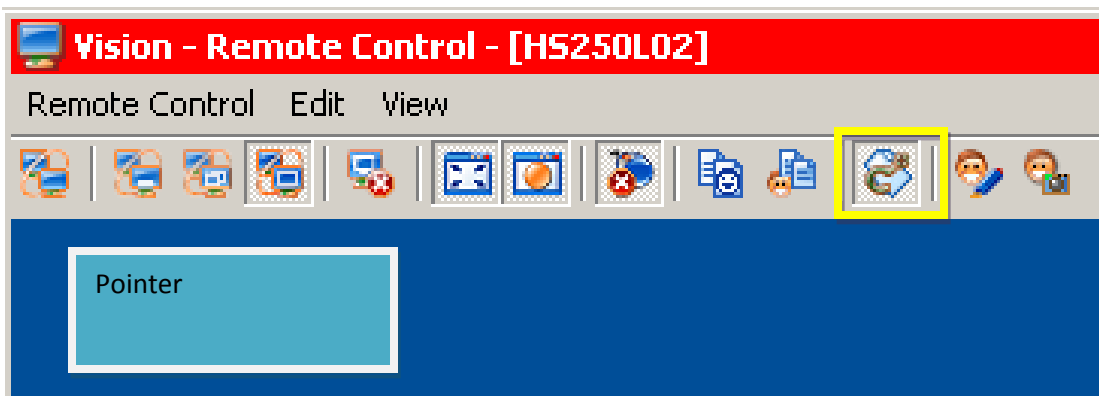
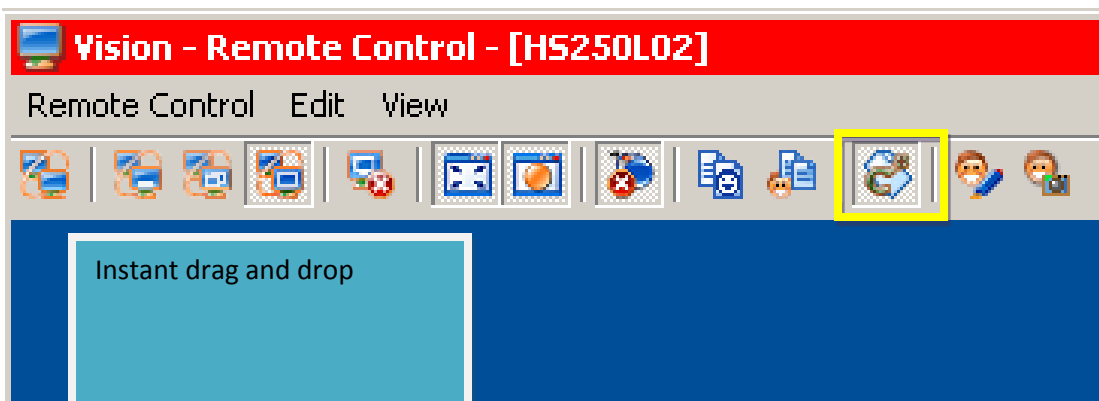
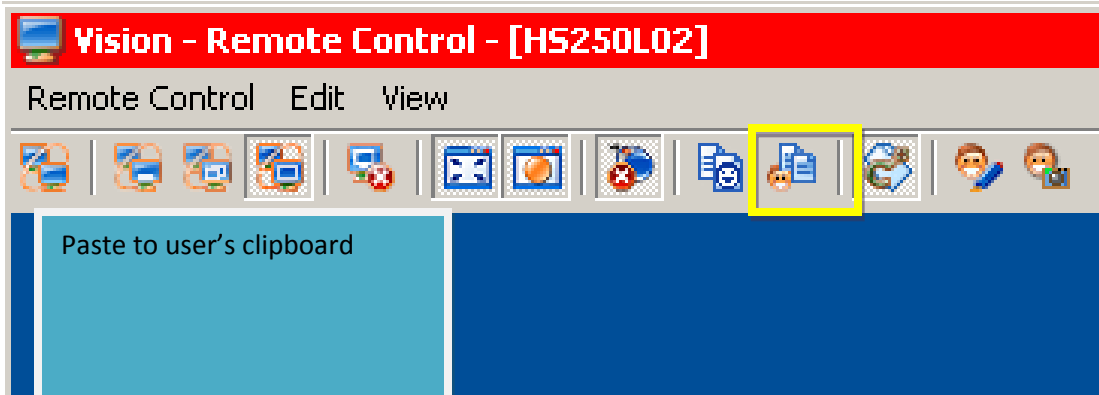
Notice the top part of the window has turned red

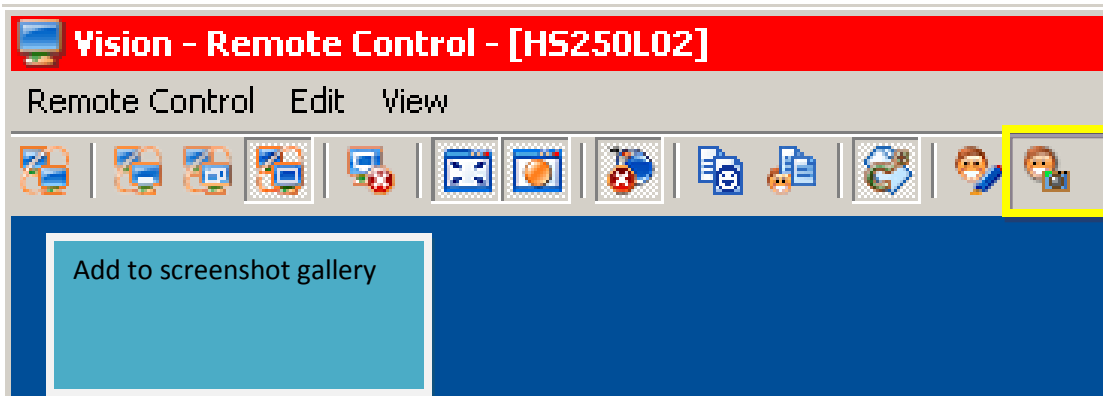
Maximize the screen (if you wish)



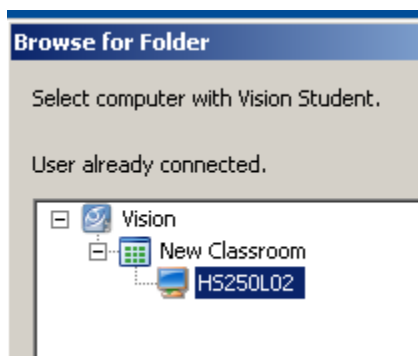
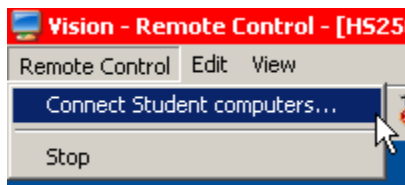








To connect student computers, click Remote Control



Note that you will need more than one Vision client for this to work