

SAYRE AREA SCHOOL DISTRICT TECHNOLOGY TIPS

END USER – ADVANCED – VIEW TAB

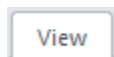
Purpose

To highlight the menu features of Vision (v.7).

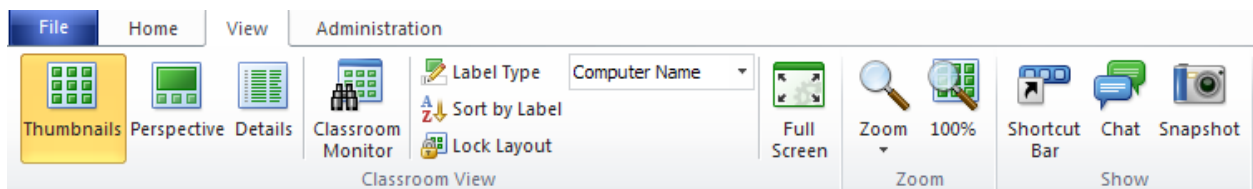
The Menu Bar



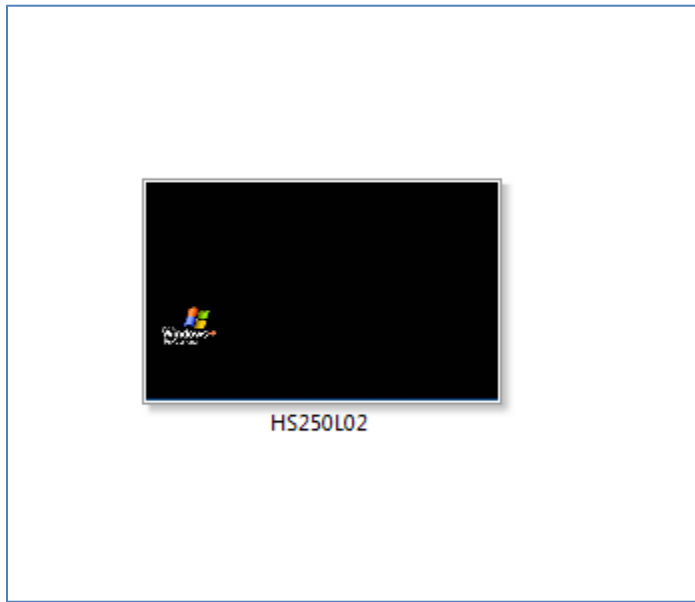
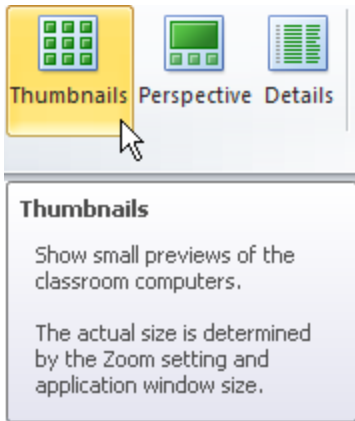
View tab



Under the View tab

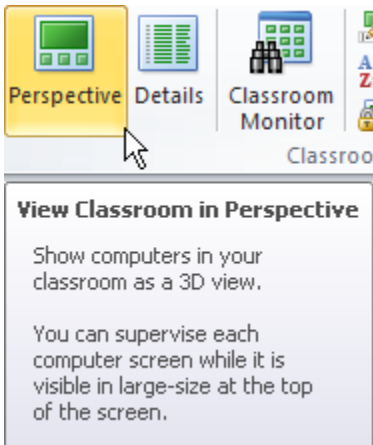


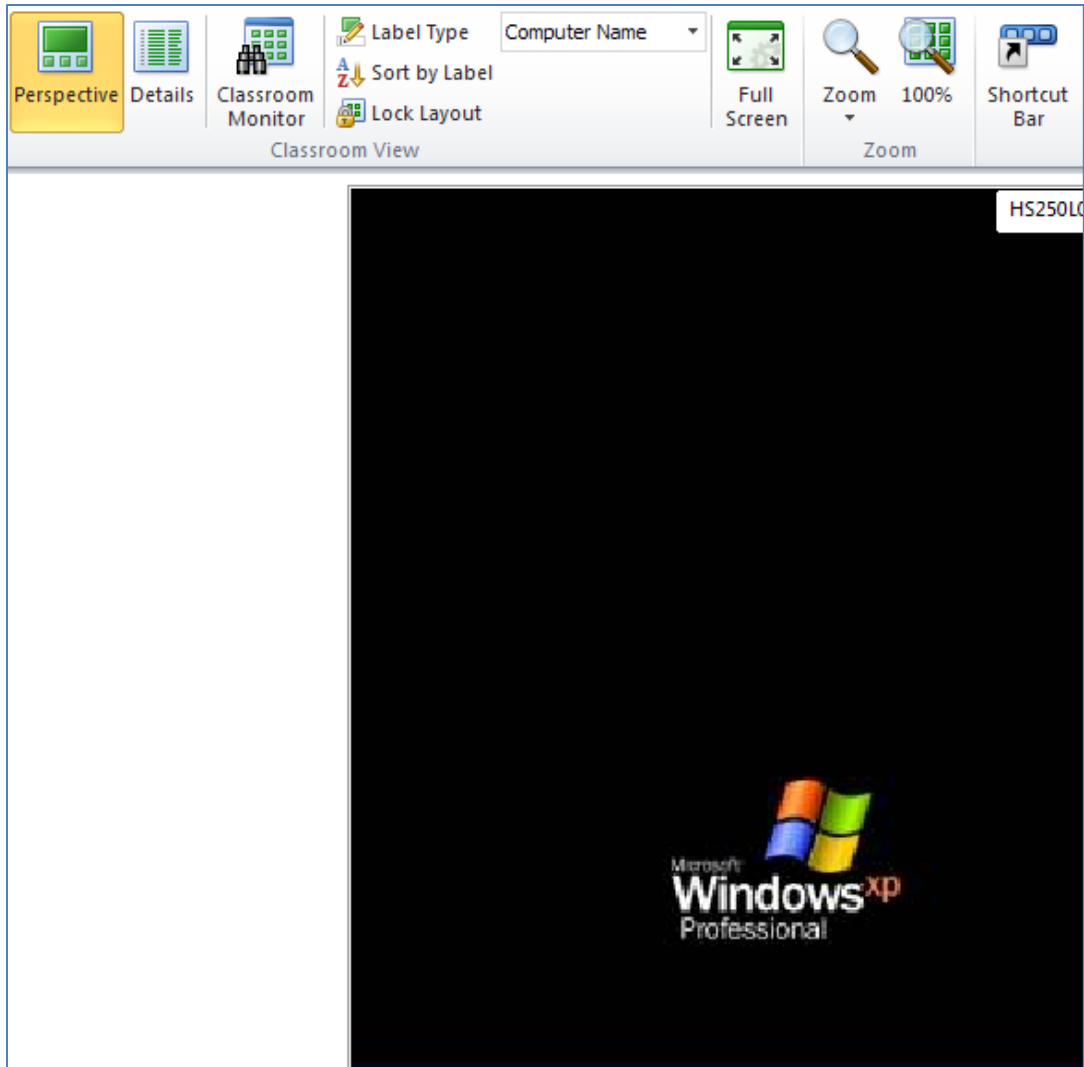
Thumbnails



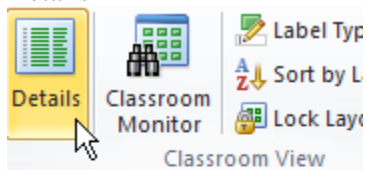
ex. thumbnail

Perspective





Details




Details

Show detailed information about classroom computers in text format.

Use the information to see which computers are available for class and which programs the computers are currently running.

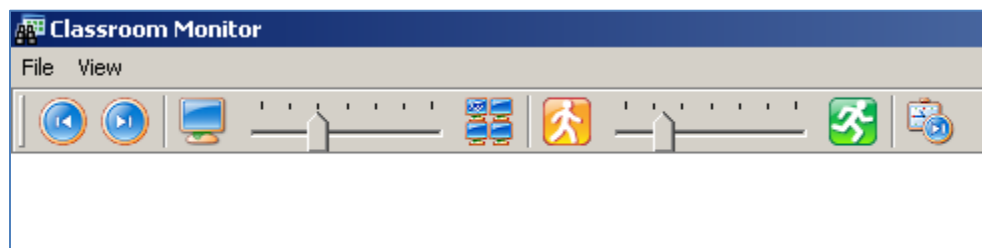
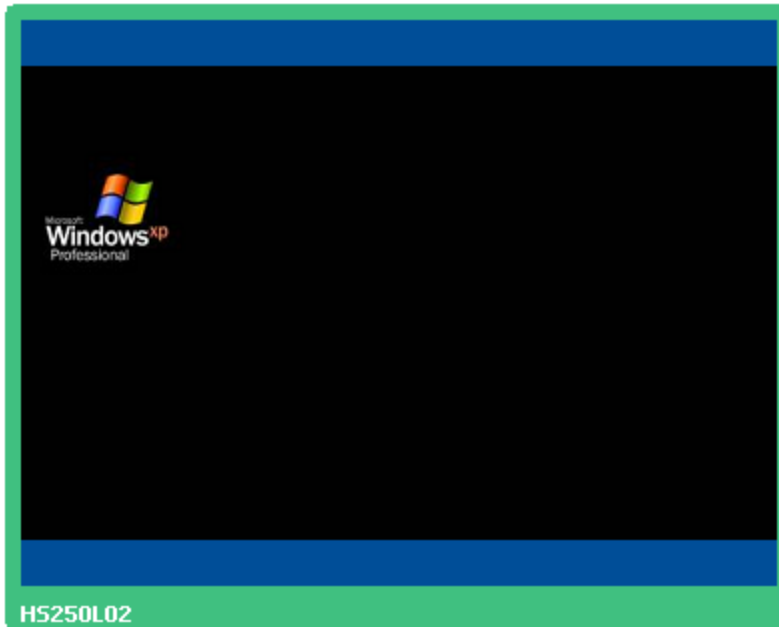
ex. details view

Computer Name	Web Access status	Status
 HS250L02	Unlocked	Available

Classroom monitor

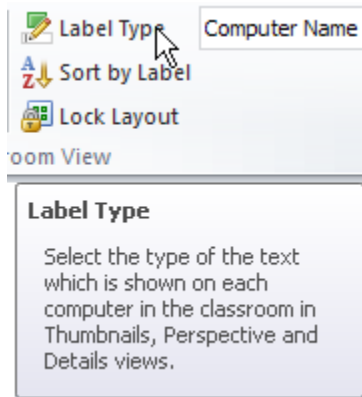


ex. classroom monitor:

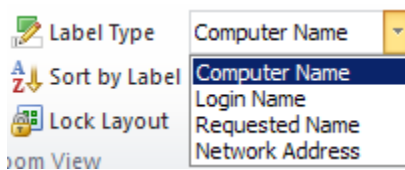


These features allow the Master to monitor multiple computers and to automatically move from computer to computer

Label type



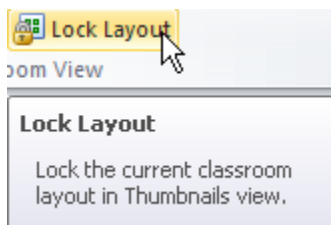
(below, ex. label types, Computer Name)



Sort by Label

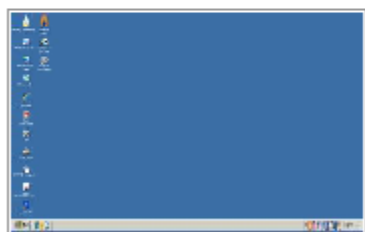
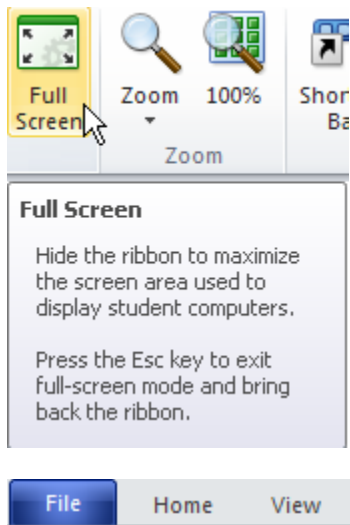


Lock layout



Click a second time to deselect

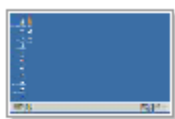
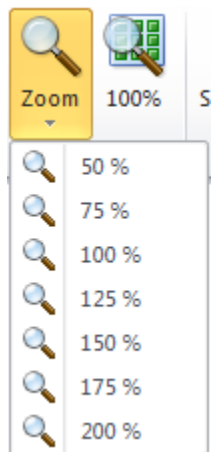
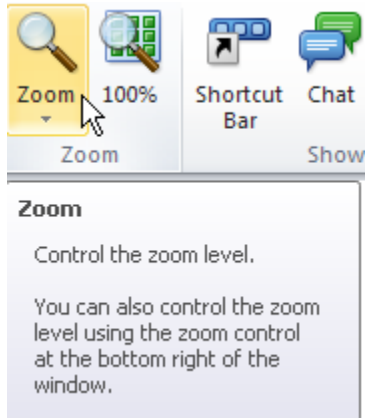
Full screen



HS250L02 [Unknown]

Notice that the full menu ribbon is no longer visible, to get out of full screen, click on View → deselect Full Screen

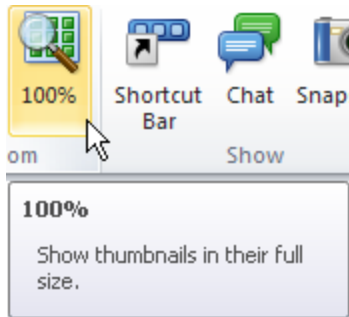
Zoom



HS250L02 [Un... 50%



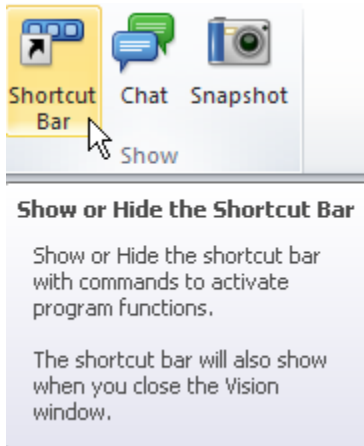
HS250L02 [Unknown] 75%



HS250L02 [Unknown]

100%

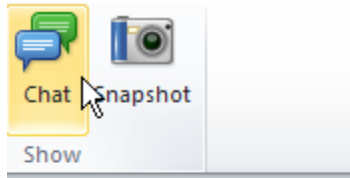
Shortcut bar





the shortcut bar

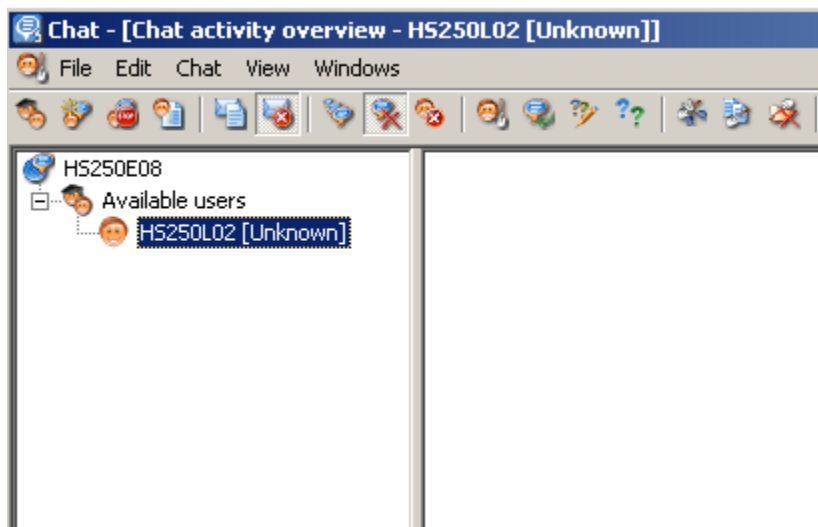
Chat



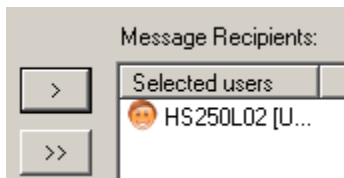
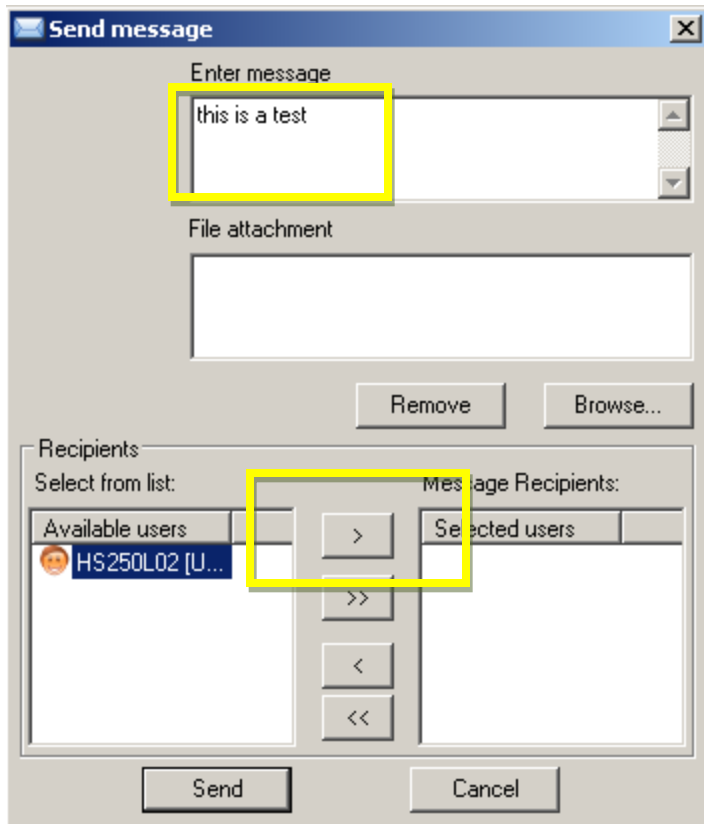
Chat

Open Chat and start interacting with students in your classroom.

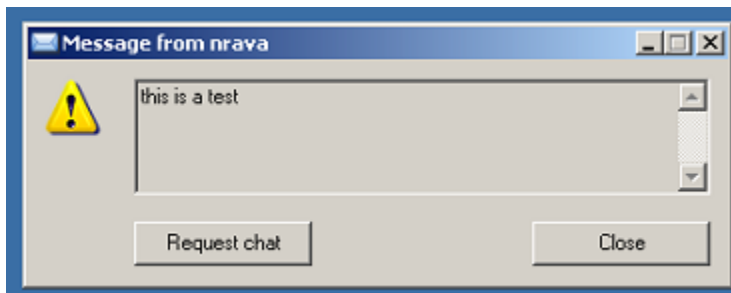
You can send text messages, run poll based questionnaires and exchange files with computers in your classroom.



Send message

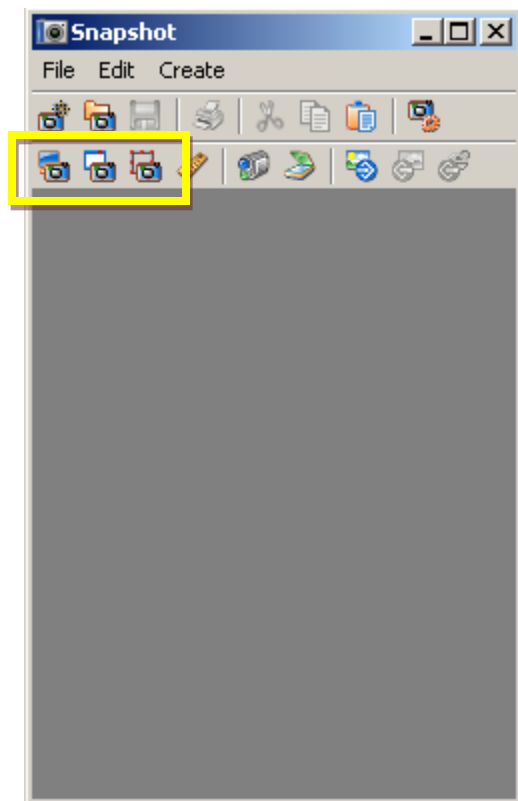
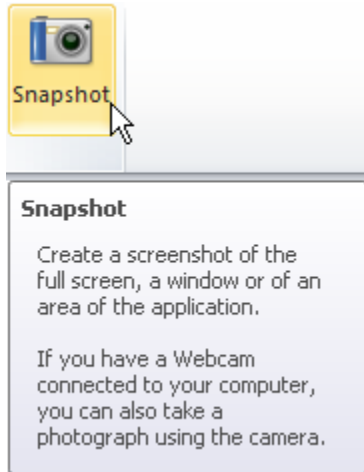


Send

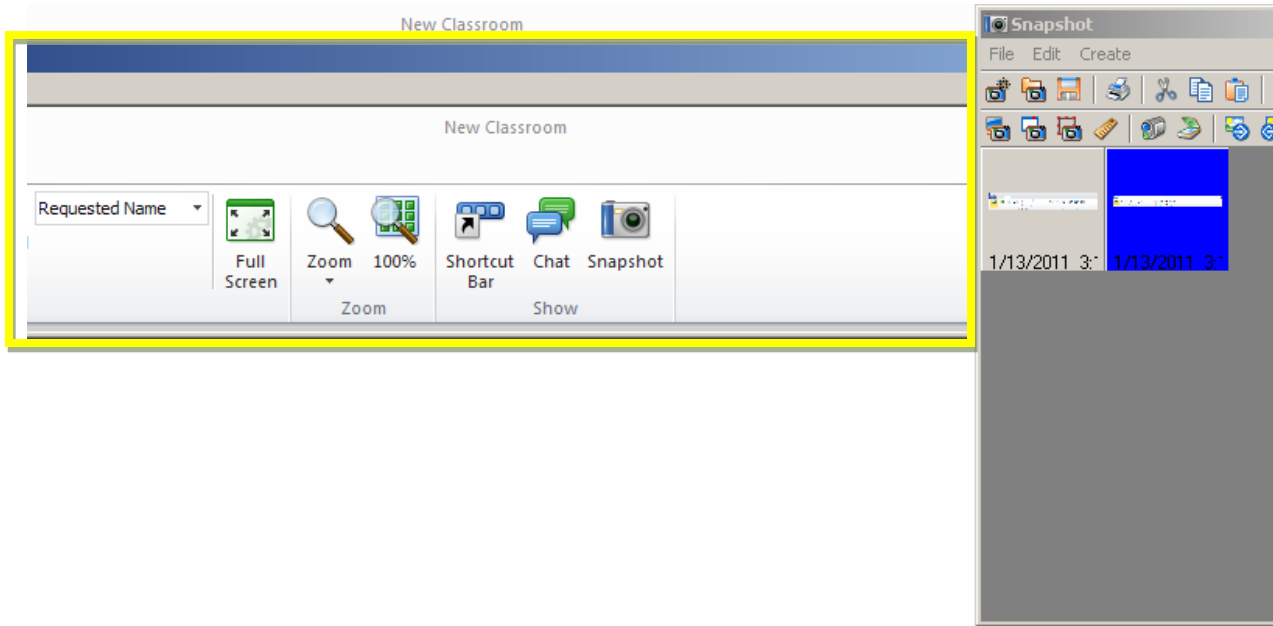


This is the message that appears on the client's machine

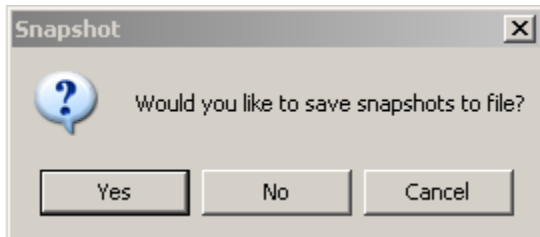
Snapshot



You can do a full screen snapshot, window snapshot, or area snapshot



Sample snapshot (yellow)



Option to save the snapshot