

HOW TO SCAN YOUR COMPUTER

Purpose

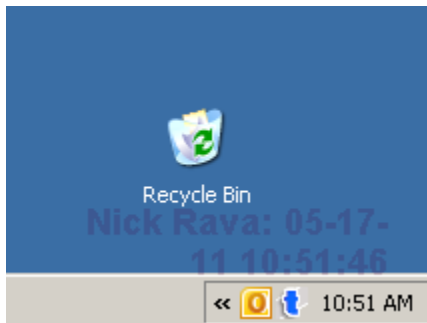
Thirtyseven4 antivirus provides real time protection for your SASD computer.

For example, if you open a new file that was emailed to you, ThirtySeven4 checks it automatically for viruses.

If you feel that your computer may have viruses that have been on your computer for some time, you can run a scan on your entire computer (this is optional – used only if you wish to scan).

Procedure

Double click the Thirtyseven4 icon in your system tray



Please Note: Features Secured

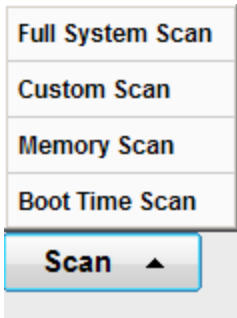


If you click Settings you will be prompted for a password – only the Technology staff has access to these settings. Any features that prompt for a password are for Technology staff use only. This document covers items that end users can control.

Scan

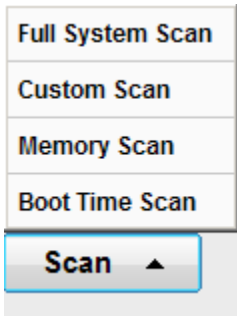
Click the Scan button





Full System Scan

To scan the whole computer, click Full System Scan



Thirtyseven4 AntiVirus 2011
Virus database 17 May 2011
Settings Tools Reports Help ▾

Scan Progress
Performing full system scan

[← Back to Dashboard](#)

Folder: C:\dell\drivers\R132886\Driver12KXP_INF\B_35130

Extracting:

Status	Action		
Files scanned	88	Files repaired	0
Archive/Packed	14	Files quarantined	0
Threats detected	0	Files deleted	0
DNAScan warnings	0	I/O errors	0
Boot/Partition viruses	0		
Scanning status	0%		

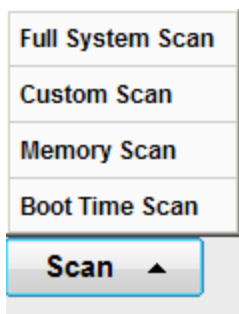
Shut down PC when finished

Skip Folder Skip File Pause Stop

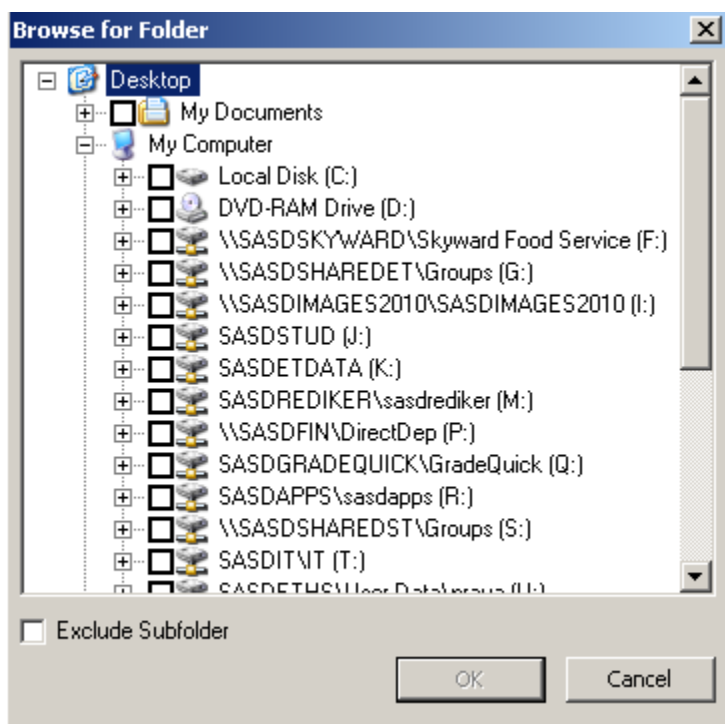
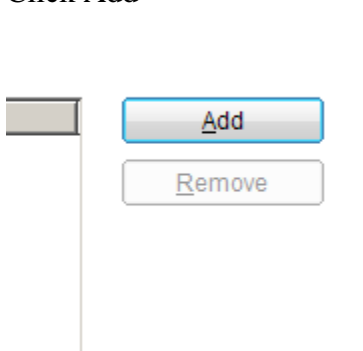
© 2011 Thirtyseven4, LLC

Custom Scan

Click Custom Scan



Click Add



Select the area you want to scan

Click Start Scan

Select the scan item from below list and click Start Scan.
To add new item to the list click Add.

Scan Item	Scan Subfolder
P:\	Yes

© 2011 Thirtyseven4 LLC

Memory Scan

To scan the computer's memory, click Memory Scan

- Full System Scan
- Custom Scan
- Memory Scan
- Boot Time Scan

▲



Scan Progress

Performing memory scan

[← Back to Dashboard](#)

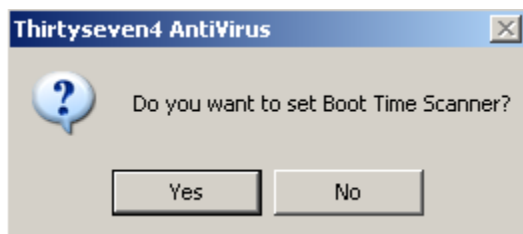
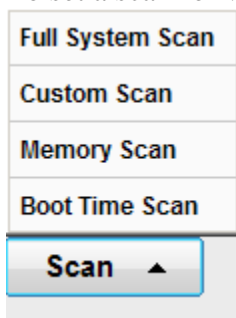


Status	Action		
Files scanned	911	Files repaired	0
Archive/Packed	0	Files quarantined	0
Threats detected	0	Files deleted	0
DNAScan warnings	0	I/O errors	0
Boot/Partition viruses	0		
Scanning status	Finished		

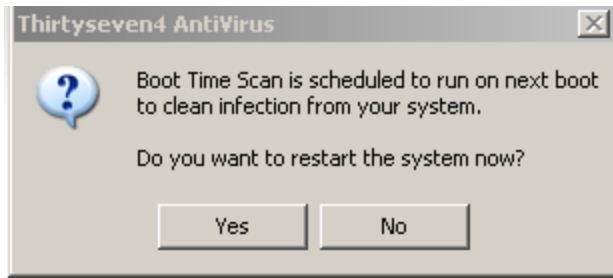
Boot Time Scan

Please note that when you select this feature, the boot scan can take a long time to process (30 minutes or more)

To set a scan for when the computer boots up, click Boot Time Scan



Click yes



If you want to perform the scan immediately, click yes (the computer will restart) otherwise click no

Remember, the scan can take a long time and you will not be able to use your computer while this is scanning