

SAYRE AREA SCHOOL DISTRICT TECHNOLOGY TIPS

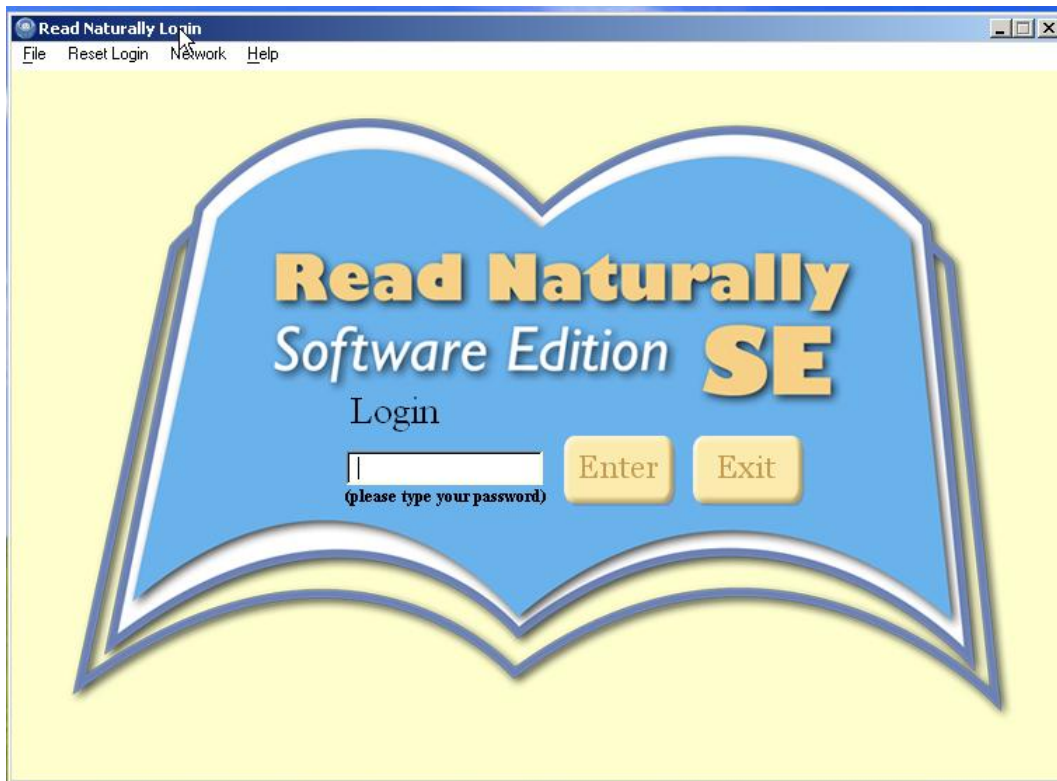
SETTING UP A READ NATURALLY CLASSROOM AND STUDENTS

Purpose

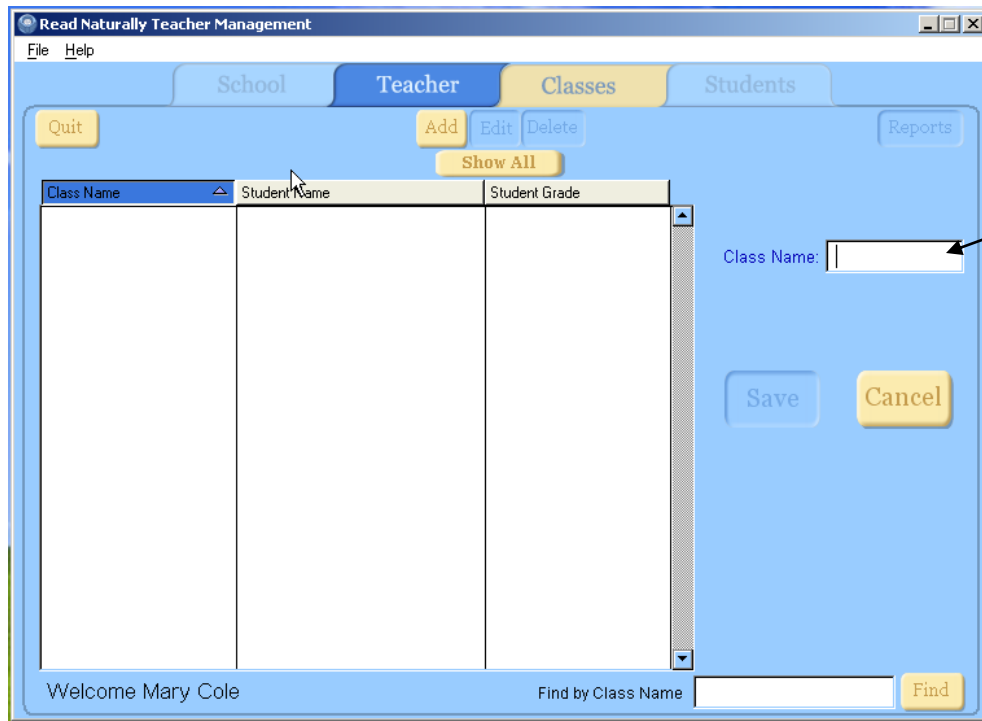
This documentation will show teachers how to set up their Read Naturally Classroom as well as set up students in those classes.

Setting Up the Classroom

Log into the Read Naturally software using your assigned password.

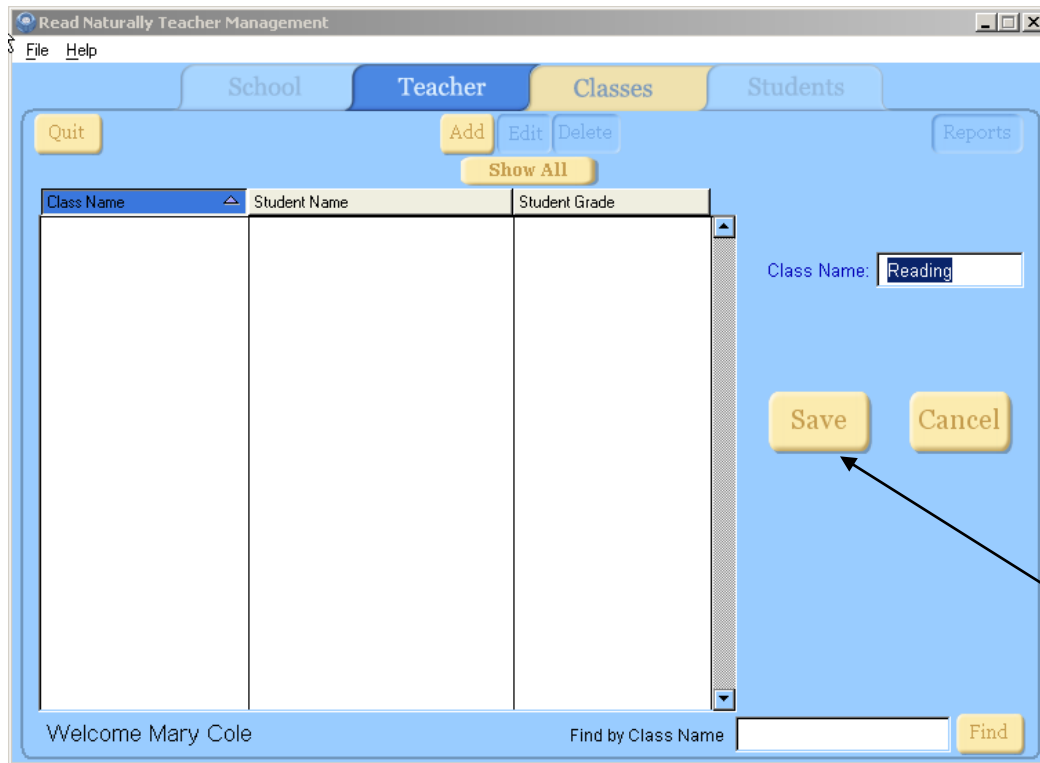


If necessary, click the “Classes” tab at the top of the screen and then click “Add”



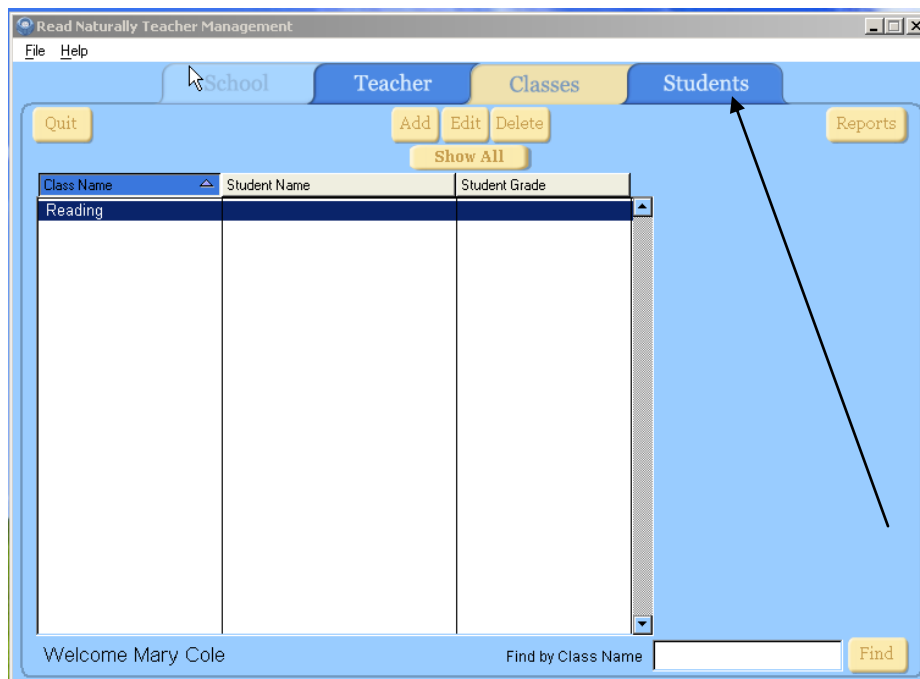
On the right will appear a spot for you to enter your class name.

Enter the class name and click “Save”

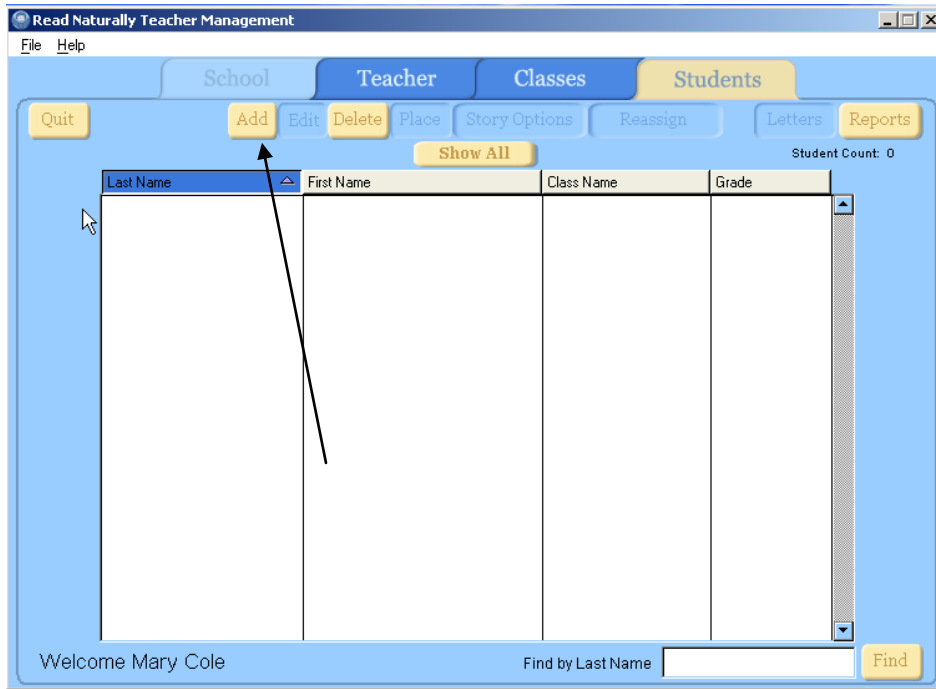


Adding Students

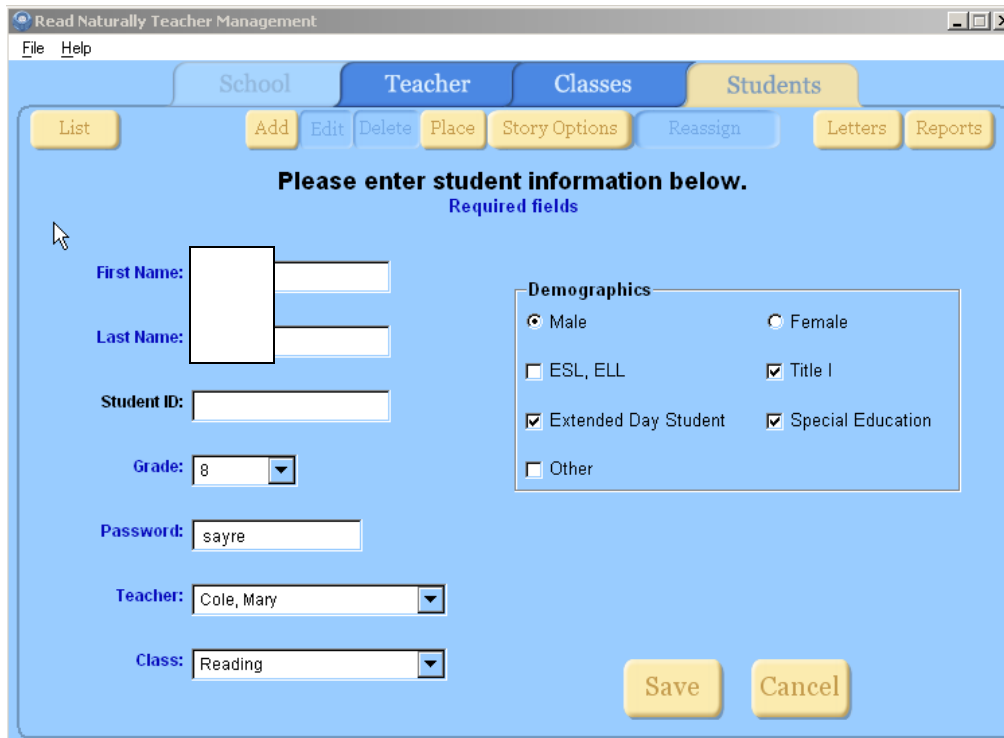
To add students to your classes, click the “Students” tab at the top of the screen.



Then click the “Add” button



Enter in the student's information along with their demographics information (you do not need to add Student ID number). PLEASE NOTE: Students log in by password ONLY so each student must have a unique password. Click "Save".



Before adding a student, the program requires you to set up his/her story options. Click "Yes"

The screenshot shows the 'Students' tab in the 'Read Naturally Teacher Management' application. A form titled 'Please enter student information below.' is displayed, with a sub-heading 'Required fields'. The form includes fields for First Name, Last Name, Student ID, Grade (set to 8), Password (sayre), Teacher (Cole, Mary), and Class (Reading). A dialog box is overlaid on the form, asking 'Would you like to set up story options for this student now?' with 'Yes' and 'No' buttons. To the right of the dialog box, there are checkboxes for 'Female', 'Title I', and 'Special Education'. 'Save' and 'Cancel' buttons are at the bottom right of the form.

The screenshot shows the 'Story Options' dialog box for 'Joe Smith'. It has two tabs: 'Basic' and 'Advanced'. The 'Basic' tab is active. Under 'Placement:', there is a 'Goal:' field with a value of 1, a 'Set:' dropdown menu set to 'Auto', and a 'Level:' dropdown menu. Under 'SE Steps:', there are several checked options: 'Key Words', 'Prediction' (with a time of 2 minutes), 'Cold Timing', 'Read Along' (with 'Vocabulary' checked and 'Required Listening' set to 3), 'Questions' (with 'Open-ended questions' checked), and 'Retell' (with a time of 5 minutes). Under 'Speeds:', there are three dropdown menus: 'First' set to 'normal', 'Second' set to '7.5% increase', and 'Third' set to '15% increase'. Under 'Phonics:', the 'Word List' option is checked. 'Save' and 'Cancel' buttons are at the bottom. Three red speech bubbles with numbers 1, 2, and 3 are overlaid on the 'Goal', 'Set', and 'Level' fields respectively.

1. Goal-The reading rate goal is the number of words a student must read correctly per minute in order to pass a story. For each student, you set a predetermined goal that is appropriate for his or her current reading ability. The goal needs to be sufficiently high to require the student to practice reading the story many times in order to achieve the goal rate, but not so high that the student becomes frustrated.
2. Set-Determines which set of stories in the level will be available to the student-1 (for the first 12 stories) or 2 (for the second 12 stories).
3. Level-The reading level to be assigned to this student in the story options. Read Naturally assigns levels to its materials, from 1st through 8th grade reading level, based on the following readability formula:
 - a. Fry and Spache readability formulas for levels .8 through 2.7
 - b. Harris-Jacobson readability formula for levels 3.0 through 5.0
 - c. Dale Chall readability formula for levels 5.6 and above.
4. For all other definitions of the SE Steps, please refer to the teacher's manual located on the Sayre SD web site at:

<http://www.sayresd.org/2009Tech/TechManuels/Read%20Naturally/Teacher's%20Guide.pdf>

Students Logging In

When a student logs in, they will be able to choose from a set of stories that have been chosen for them based on the profile you set up. **Students will need headphones!**

Please do not give a student YOUR password.

This would allow students the ability to create all sorts of havoc!

Report Generator

After a student has completed an entire lesson, the system will allow you to run reports, send home letters to parents, and print certificates of completion. Here are some examples:

Needs At-A-Glance for Students of Mary Cole

READ NATURALLY
Software Edition
Reports

Report date: 2/19/10
Report period: 2/19/10 to 2/19/10
Teacher: Mary Cole

[Print This Report](#)

Go to....

Student Reading	Periodic Report	Level			Fluency			Comprehension	
		Level	Goal	Stories passed	Avg time per story (first 3 / last 3)	Cold timing (first 3 / last 3)	Hot timing (first 3 / last 3)	Quiz % correct (first 3 / last 3)	Words in Retell (first 3 / last 3)
		1.0 Seq	25	1	0 hrs 41 min / 0 hrs 41 min	65/65	88/88	60/60	11/11

Key

Student is the name of a student who is active in the Read Naturally program. Students listed have completed at least one story in the specified reporting period.

Click the icon to see a report with more detailed information.

Level is the Read Naturally reading level for the student. For each student, the levels are listed in the order that the student worked on them.

Goal is the rate that the student must read to pass a story, expressed as the number of words the student can correctly read in one minute (WCPM).

Stories passed is the number of stories the student has passed within the level. To pass a story, the student must read the story at the goal rate of correct words per minute, make three or fewer errors while reading, read with good expression, and answer the comprehension quiz questions correctly.

Avg time per story (first 3/last 3) is the average amount of time the student spent working on the first three stories and the most recent three stories attempted in this level.

Cold Timing (first 3/last 3) is the average number of words correct per minute the student read in the cold timing for the first three stories and for the most recent three stories.

Hot Timing (first 3/last 3) is the average number of words correct per minute the student read in the hot timing for the first three stories and for the most recent three stories.

Quiz % Correct (first 3/last 3) is the average percentage of comprehension quiz questions answered correctly on the first try for the first three stories and for the most recent three stories.

Periodic Report for

READ NATURALLY
Software Edition
Reports

Report date: 2/19/10
Report period: 2/19/10 to 2/19/10
Teacher: Mary Cole

[Print This Report](#)

Go to....

Dear Parent/Guardian,

has been working with the READ NATURALLY program to improve reading fluency and comprehension. This report describes the work Joseph has done in READ NATURALLY during the reporting period from 2/19/10 to 2/19/10.

While working in this program, your child read stories at reading levels best suited for his/her fluency development. The ability to work in higher reading levels shows progress.

During this reporting period, Joseph read 1 story from level 1.0 Sequenced.

Your child read each story while listening to an audio recording of the story and then practiced it several times until able to read it with good expression at a goal rate. An increase in goal rate shows progress.

At the start of this reporting period Joseph's goal rate was 25 words correct per minute.

At the end of this reporting period Joseph's goal rate was 25 words correct per minute.

After reading each story, your child answered questions about the story. Students are expected to answer 80% of these comprehension questions correctly.

Joseph answered 60% of the comprehension questions correctly.

If you have any questions concerning this report, please contact me.

Mary Cole