

SAYRE AREA SCHOOL DISTRICT TECHNOLOGY TIPS

GIMP: BASICS & SAVING FOR THE WEB

Background Information

What is GIMP?

First, GIMP stands for GNU Image Manipulation Program, and in case you're wondering, GNU is an "operating system composed of free software."

GIMP is a program installed on ALL SASD PC's.

It is Open Source, which has the following advantages:

It is free – there is no cost to SASD

Students and employees may download and install on their home PC's.

For example, if a student wishes to do more graphical image manipulation on their home computer – they may go to the <http://www.gimp.org/> and follow the instructions for downloading and installing.

Purpose

This handout is to briefly go over how to use the basics of GIMP program

Included in this handout is how to save graphic files for the web

Audience

Anyone that wants to know how use GIMP program and how to save graphic files for the web

Computer Skills

Need to understand graphic file types, folders, file names, how to save files, and how to run an application.

Technology Needed

To utilize this technology Windows XP is needed with GIMP (for other operating systems including Linux and OS X, please refer to GIMP web site for instructions).

Starting up GIMP

Click on the START Button

Click on SASD Programs – then choose GIMP



First time in on a particular PC will display the following:



Click on Continue



Personal GIMP Folder

[-] C:\Documents and Settings\rrava\.gimp-2.2

- [-] gimprc
- [-] gtkrc
- [-] pluginrc
- [-] menurc
- [-] sessionrc
- [-] templaterc
- [-] unitrc
- [-] brushes
- [-] fonts
- [-] gradients
- [-] ...

For a proper GIMP installation, a folder named 'C:\Documents and Settings\rrava\.gimp-2.2' needs to be created.

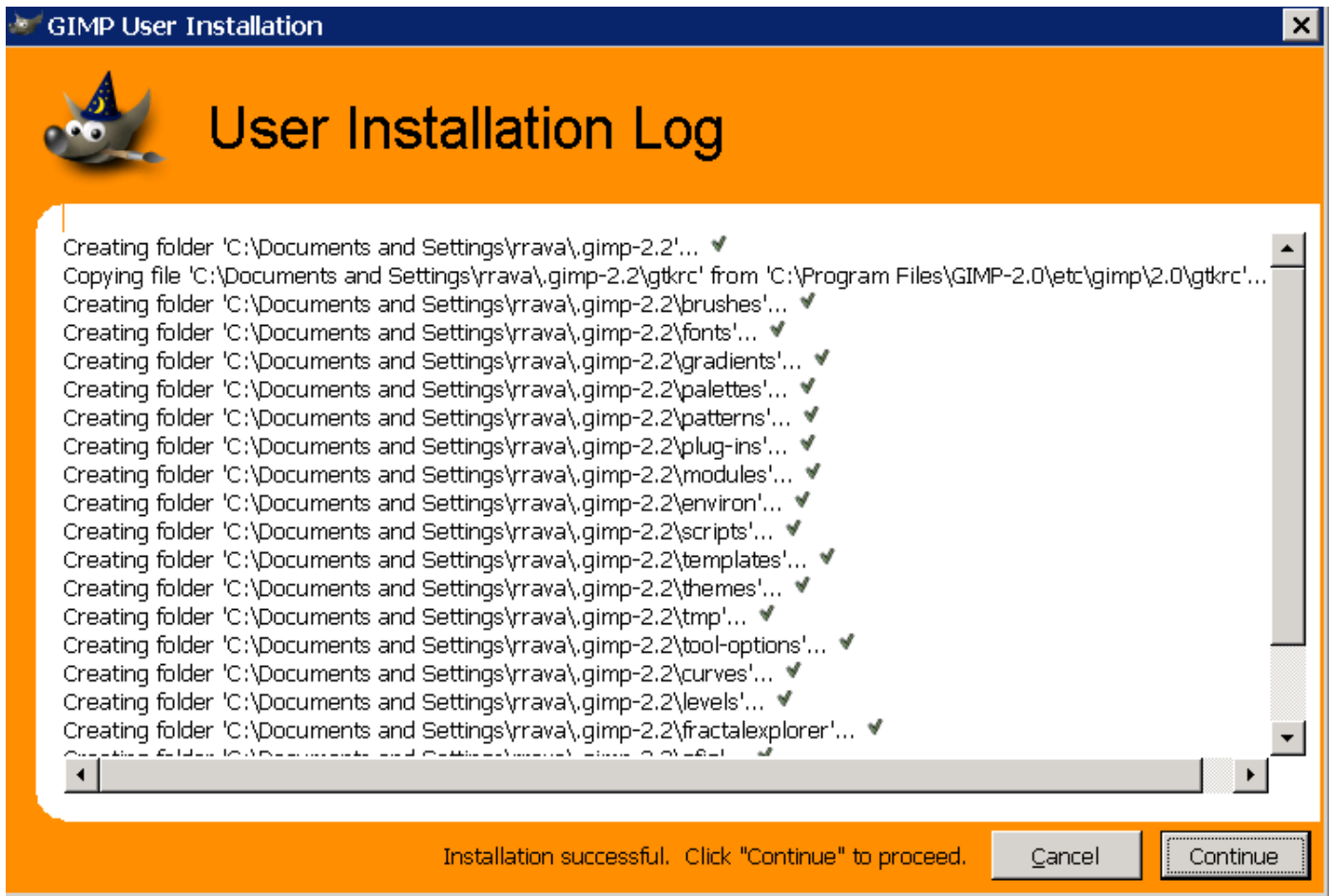
This folder will contain a number of important files. Click on one of the files or folders in the tree to get more information about the selected item.

Click "Continue" to create your personal GIMP folder.

Cancel

Continue

Click on Continue



Click on Continue



GIMP Performance Tuning

For optimal GIMP performance, some settings may have to be adjusted.

GIMP uses a limited amount of memory to store image data, the so-called "Tile Cache". You should adjust its size to fit into memory. Consider the amount of memory used by other running processes.

Tile cache size:

All image and undo data which doesn't fit into the Tile Cache will be written to a swap file. This file should be located on a local filesystem with enough free space (several hundred MB). On a UNIX system, you may want to use the system-wide temp-dir ("/tmp" or "/var/tmp").

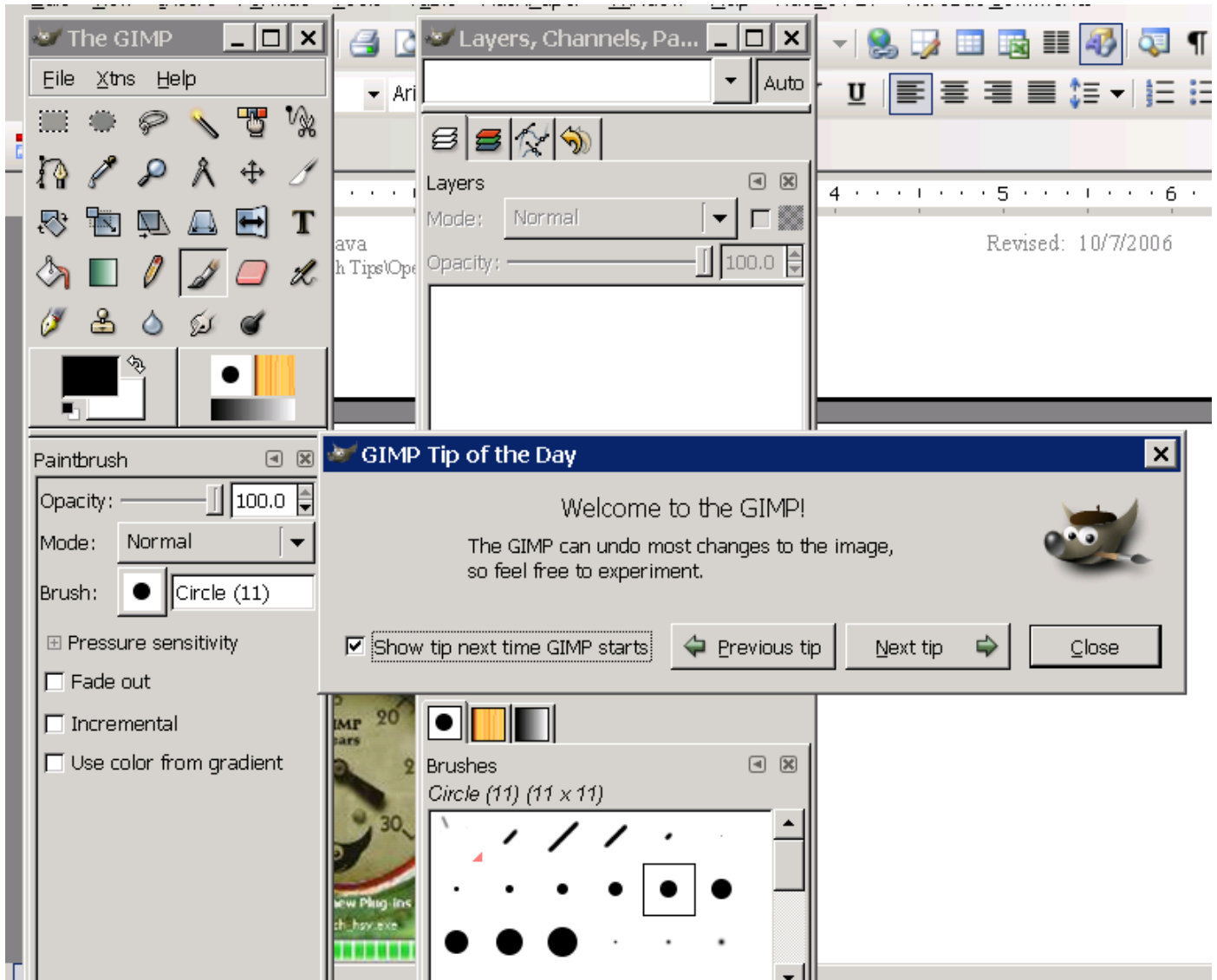
Swap folder:

Click "Continue" to accept the settings above.

Click on Continue



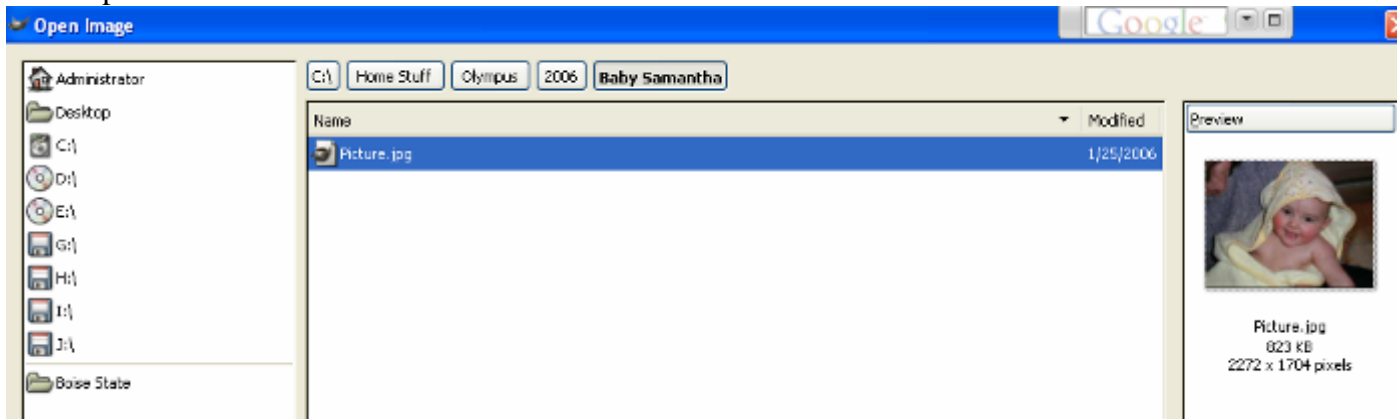
GIMP start up screen will display



Click to close the tip window - you are now in GIMP!

Working on an existing image

Next you need to open up a graphic image that you wish to manipulate – click on the File (menu) – then select open:



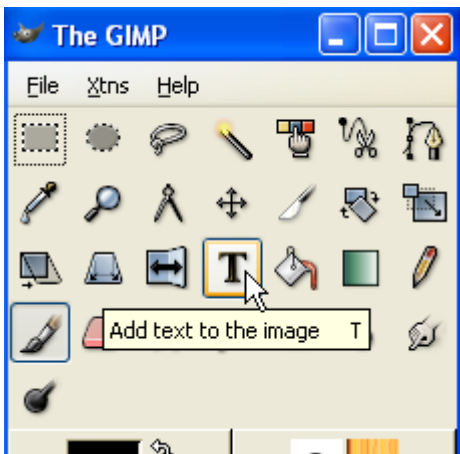
Navigate to where you have stored the image

Open the image



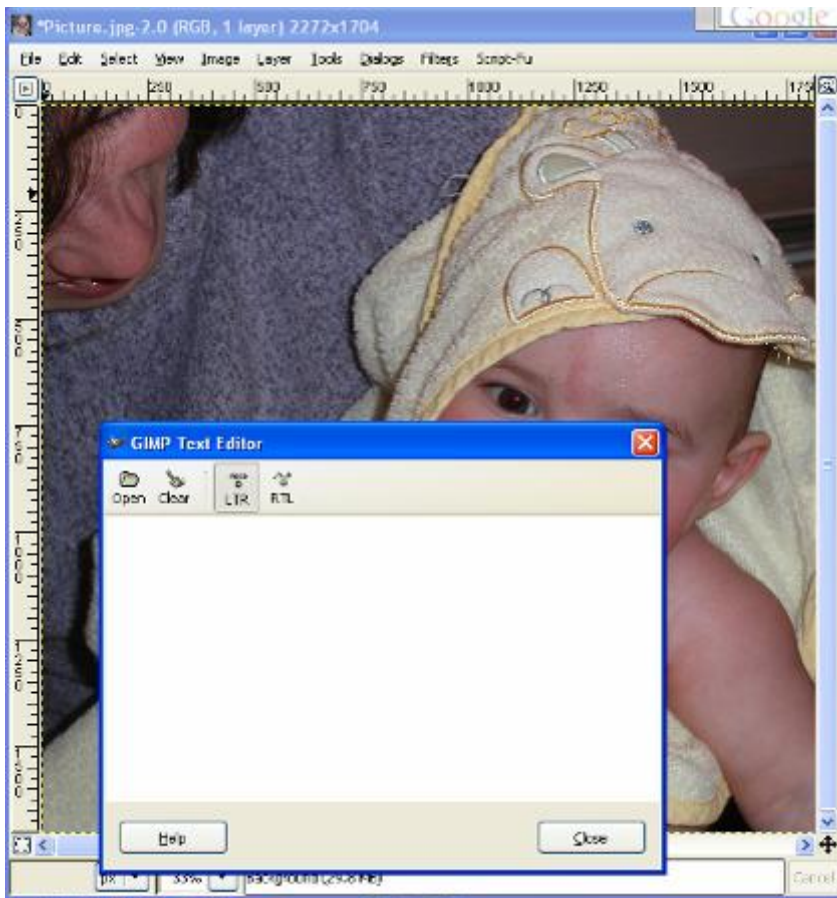
You are now ready to manipulate the image

Let's look at a simple task of adding text to this image

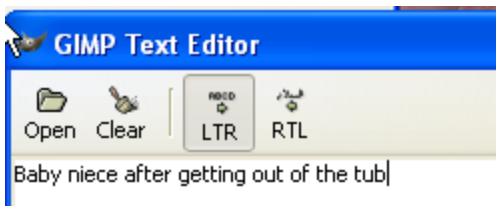


Click on the Text tool in the floating GIMP window

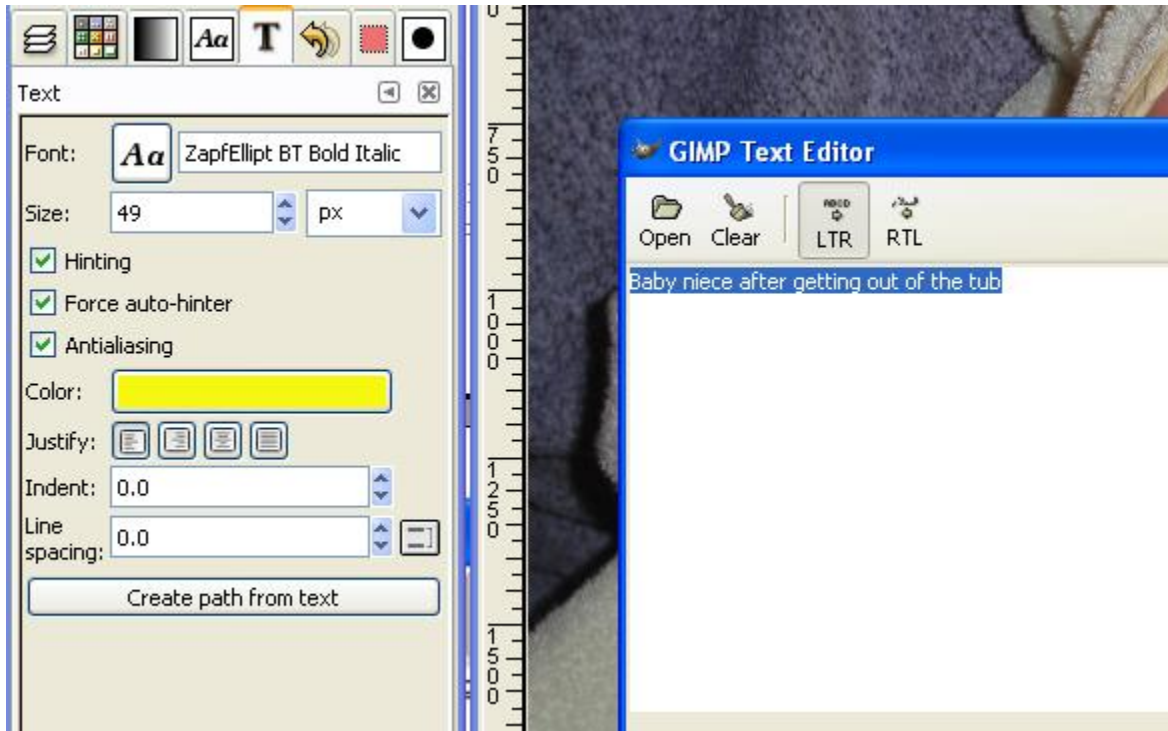
Click on the desired image that you just opened



Now enter the desired text

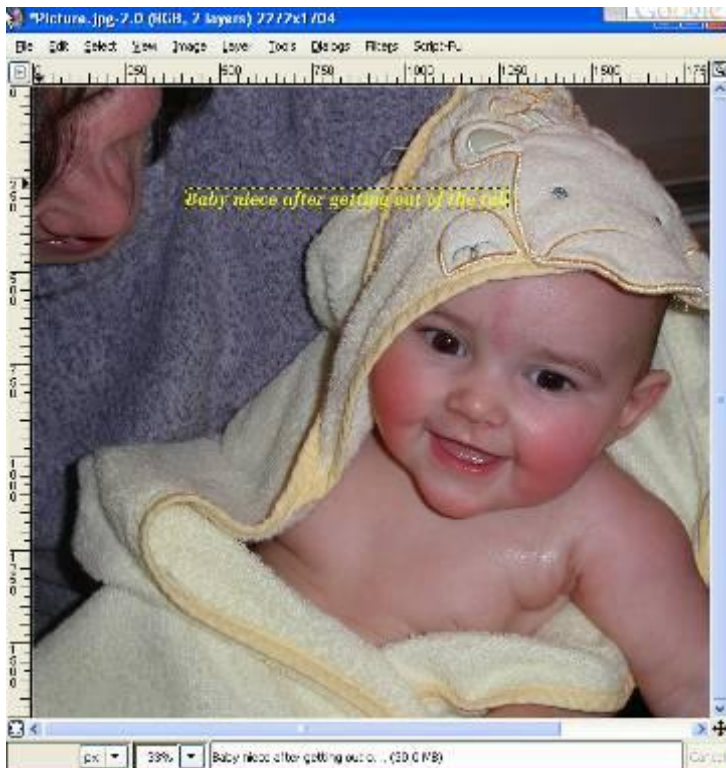


Next select the text and choose the appropriate text options – see below:



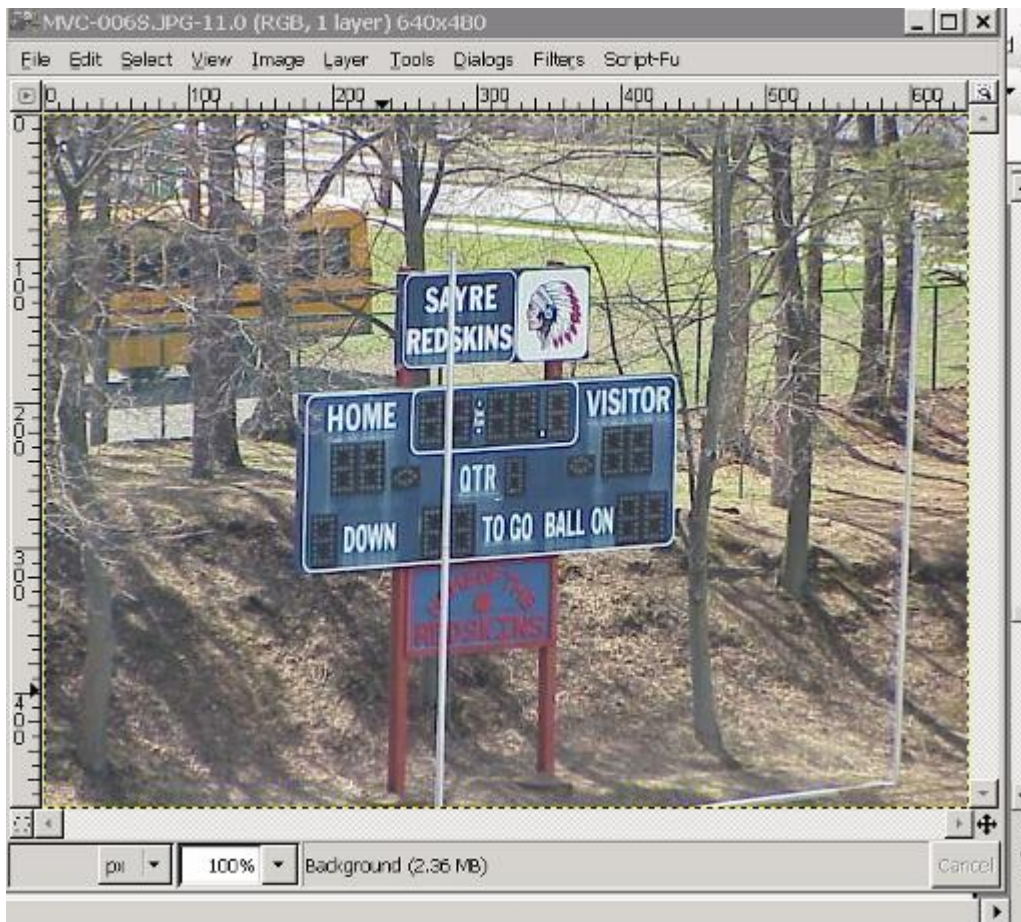
In this case I chose a size of 49 px and the color yellow

Click on the close button – you now have an image that has been manipulated

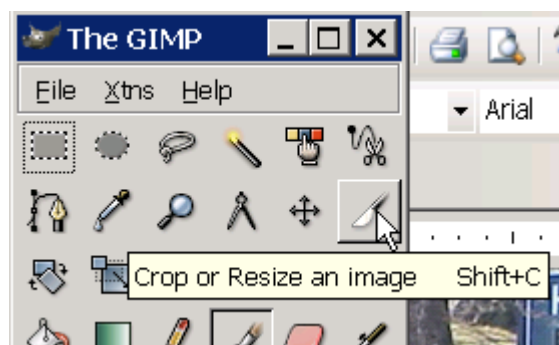


How about Cropping an Image

Let's say that you wish to crop your image (remove some sections that you do not want).

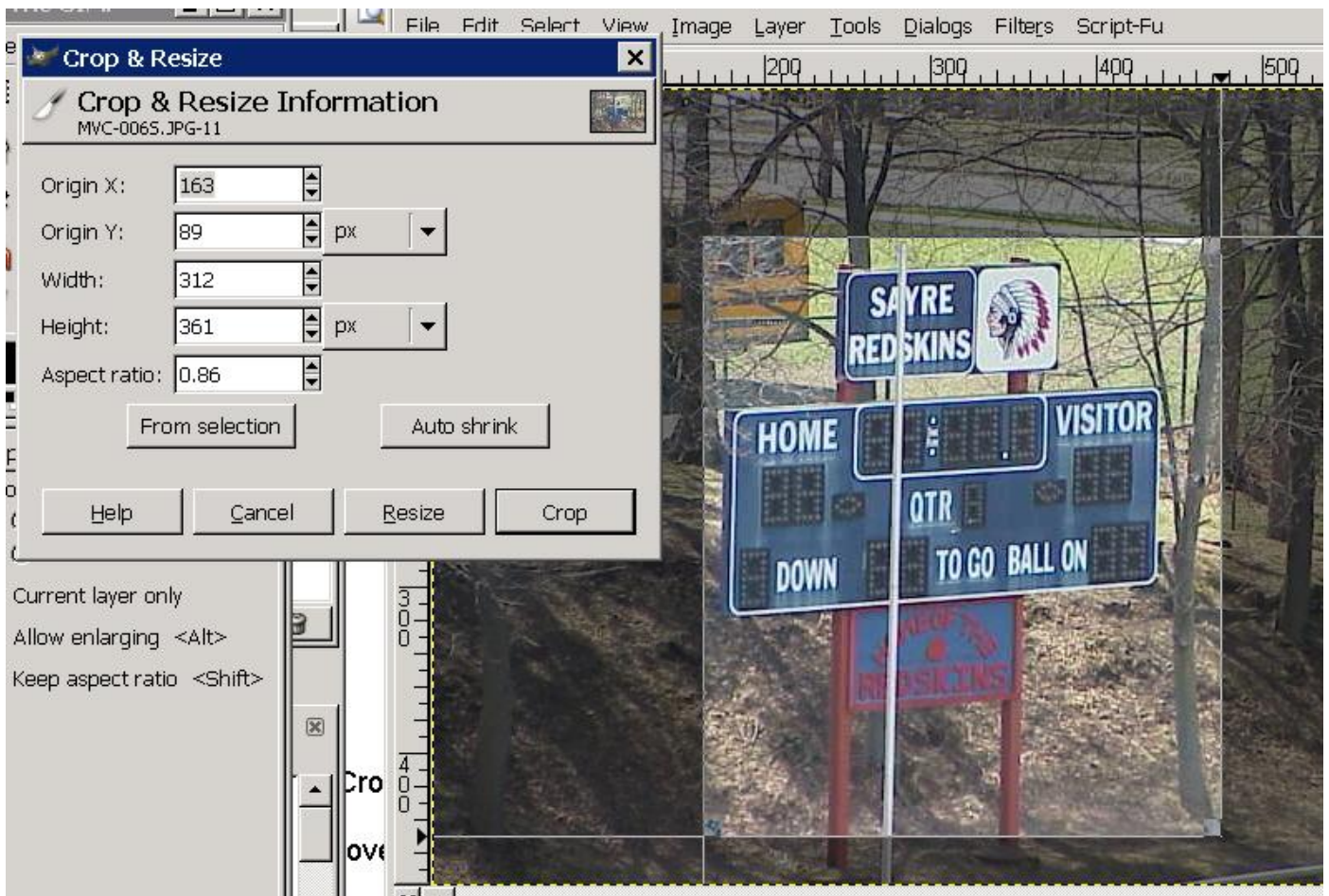


First open up the desired image – see above sample

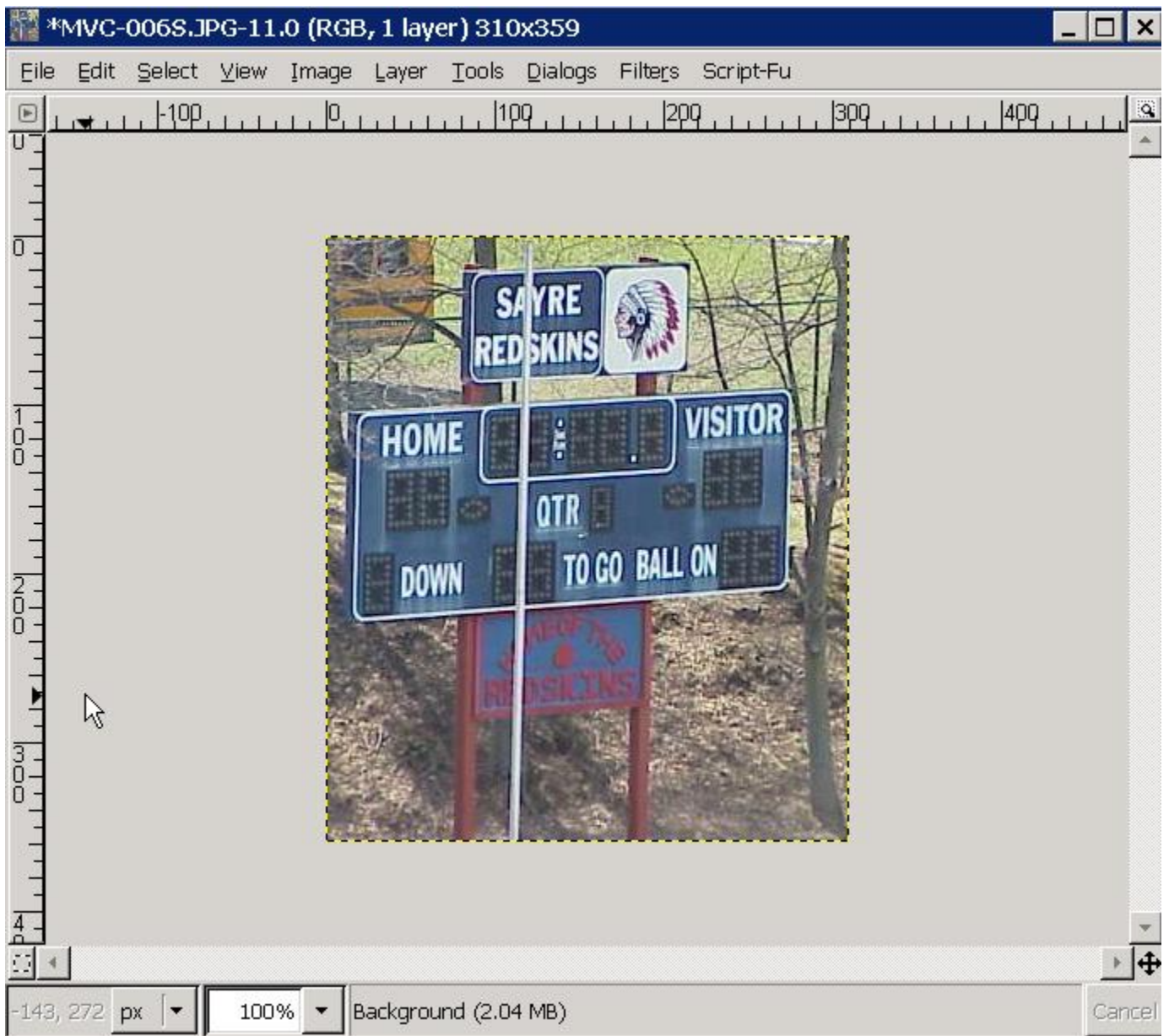


Next click on the Crop tool

Drag your mouse over the image to select what you wish to keep



Click on the CROP button



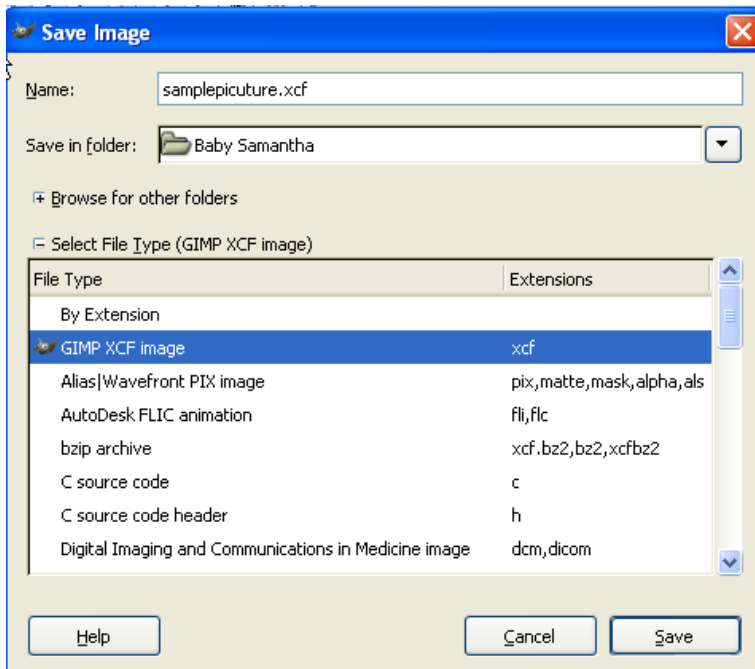
Your image has now been cropped to include what you want.

Saving for the Web

So now you have an image that you wish to save for the web.



Click on file (menu) – then click on save as



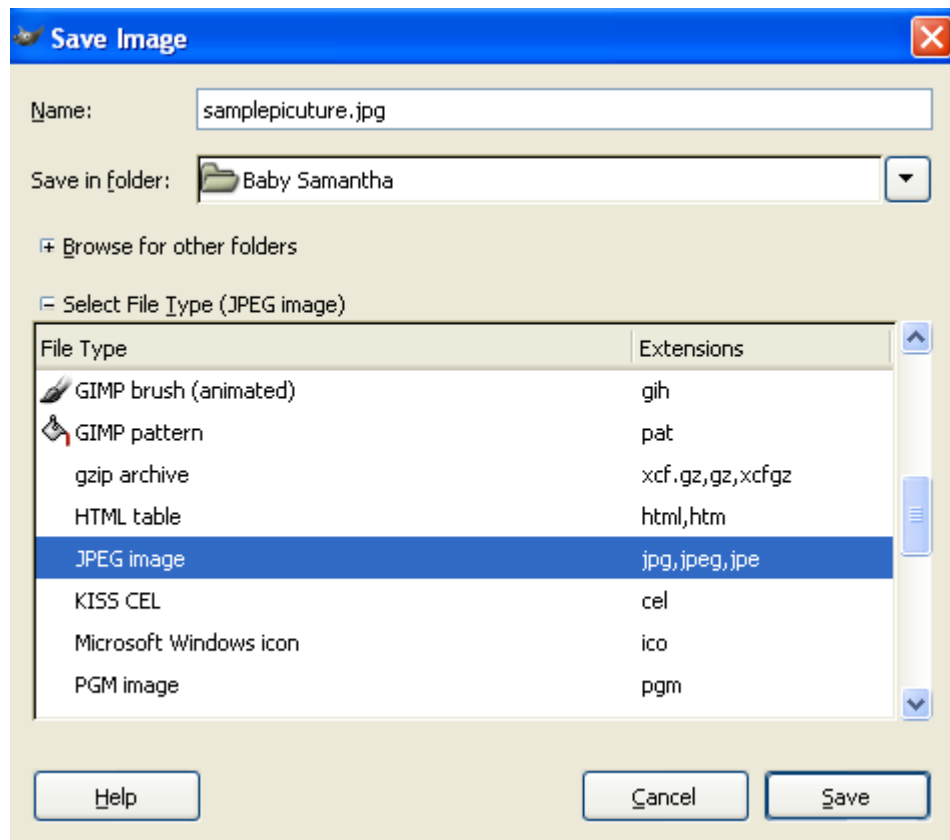
In the above screen, I entered a name and I click on the File Type and selected GIMP XCF image – you may ask why XCF? I always save my original images in the native GIMP format. This allows me to change the

image in the future (you will see this more in future GIMP activities).

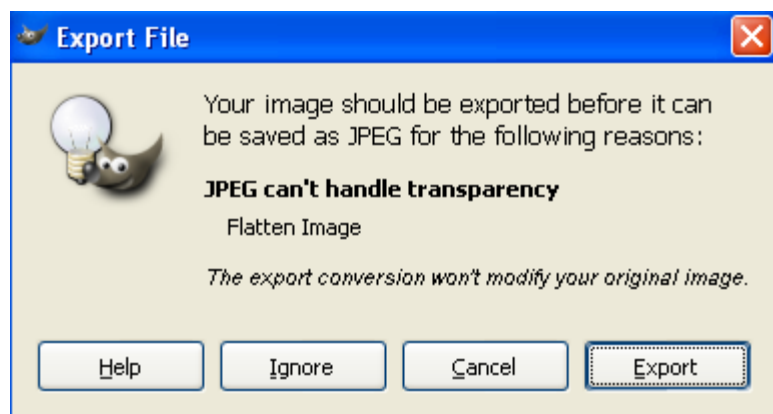
So I now click on Save

Now you may ask, how can an .xcf file be used on the web? Hmmmm.... Well, it can't. We now need to save this image in an acceptable web format. Since it is a picture with a lot of colors, we need to save it as a .jpg file.

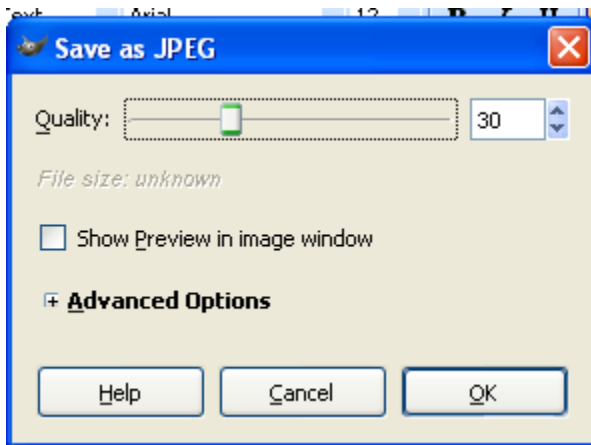
So we first click on file (menu) – save as



We select the JPEG image file type – then we click on save



Click on Export



Move the quality lever to @ 30 – you can experiment with this option. Remember that you want decent quality but fast load times with web images.

Click on OK

You have now saved an image in GIMP that is ready to be used on the web.