

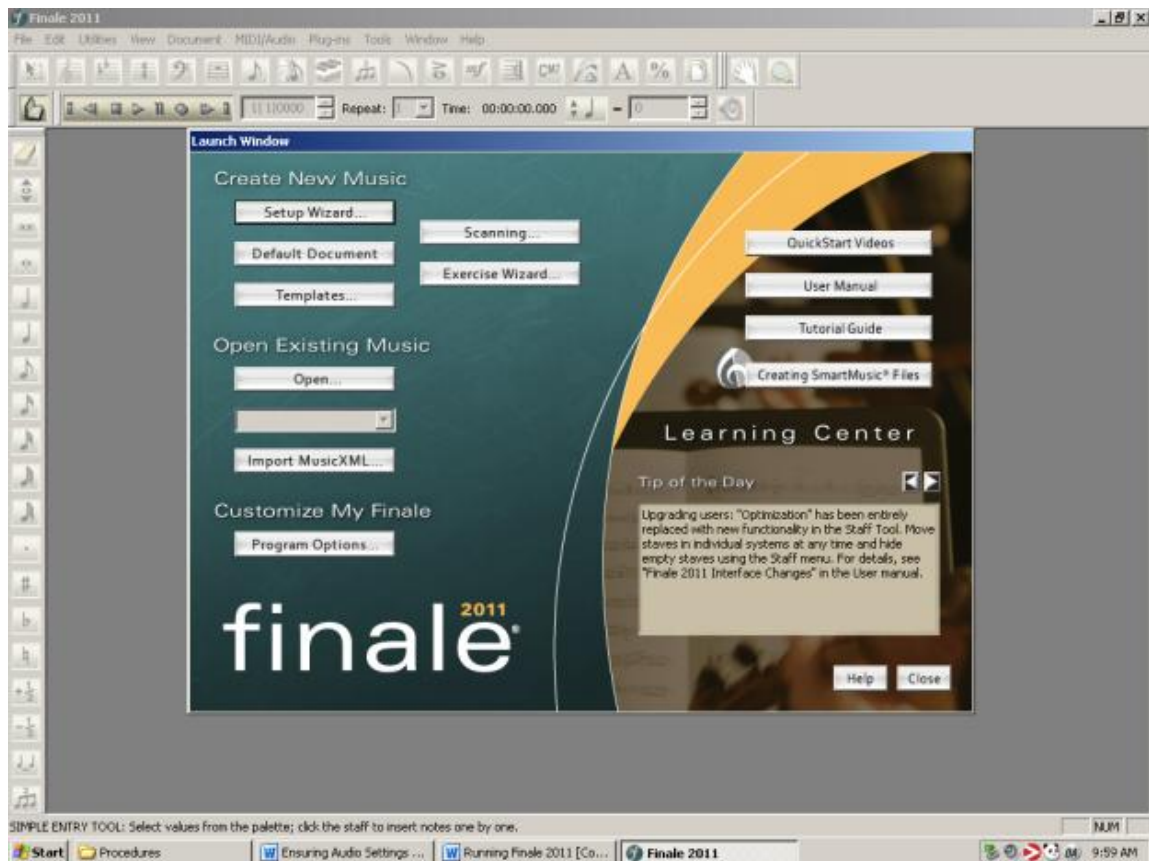
Ensuring Correct Audio Settings for Piano Input and Workstation Headphone

Purpose

1. This document will help review/setup the MIDI audio settings when using finale with the HS Music Lab. It will show how to make sure that audio settings are set to the piano for input, and that the output is set to the workstation headphones (the headphones connected to the piano controller box). This should be a **one-time step**, and should not have to be redone by every user.
(Please Note: That you may get the MIDI Setup screen (STEP 5) upon program launch if the Piano is not turned on or plugged in, the user may also get this screen the first time they start the Finale 2011 program.)

Procedure

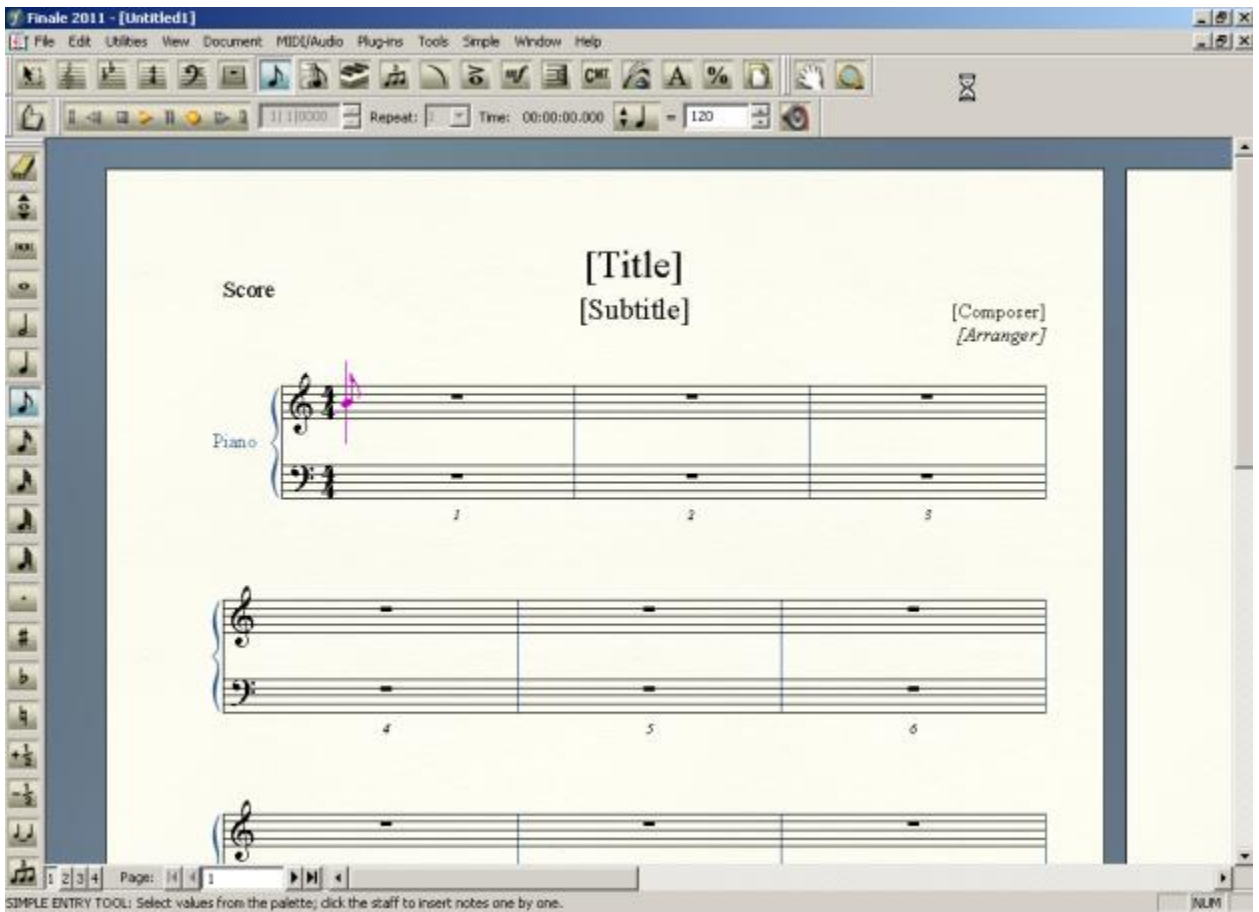
1. Once you have launched the Finale 2011 program you should see a screen similar to the one below:



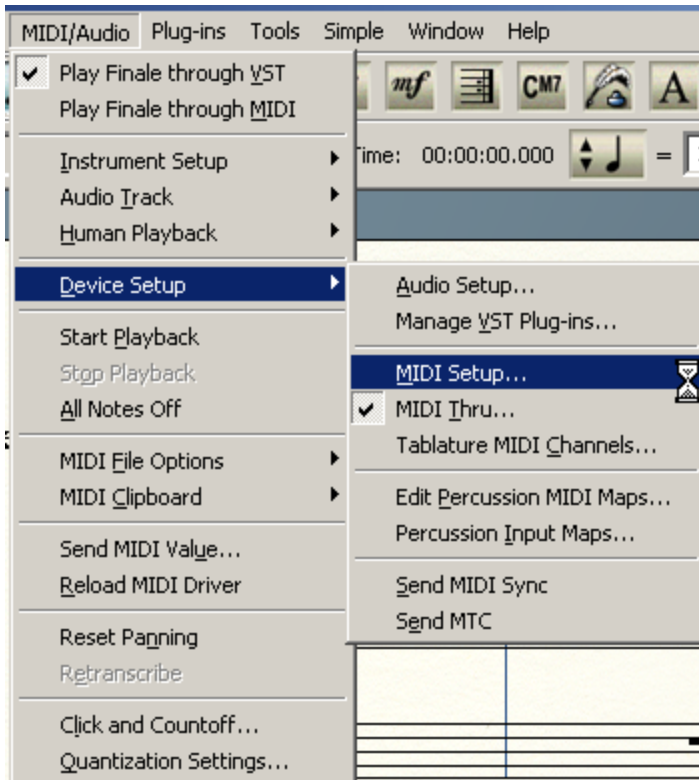
2. Click **Setup Wizard** under where it says Create New Music:



3. After clicking default document the new blank sheet music document will appear on the screen.

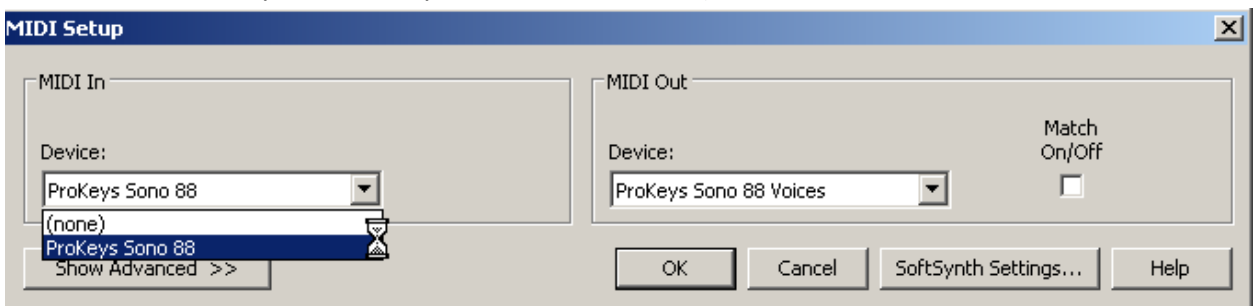


4. You will need to click the **MIDI/Audio** menu on the top of the program, once the menu opens drag the mouse over the **Device Setup** menu and select the **MIDI Setup** option.

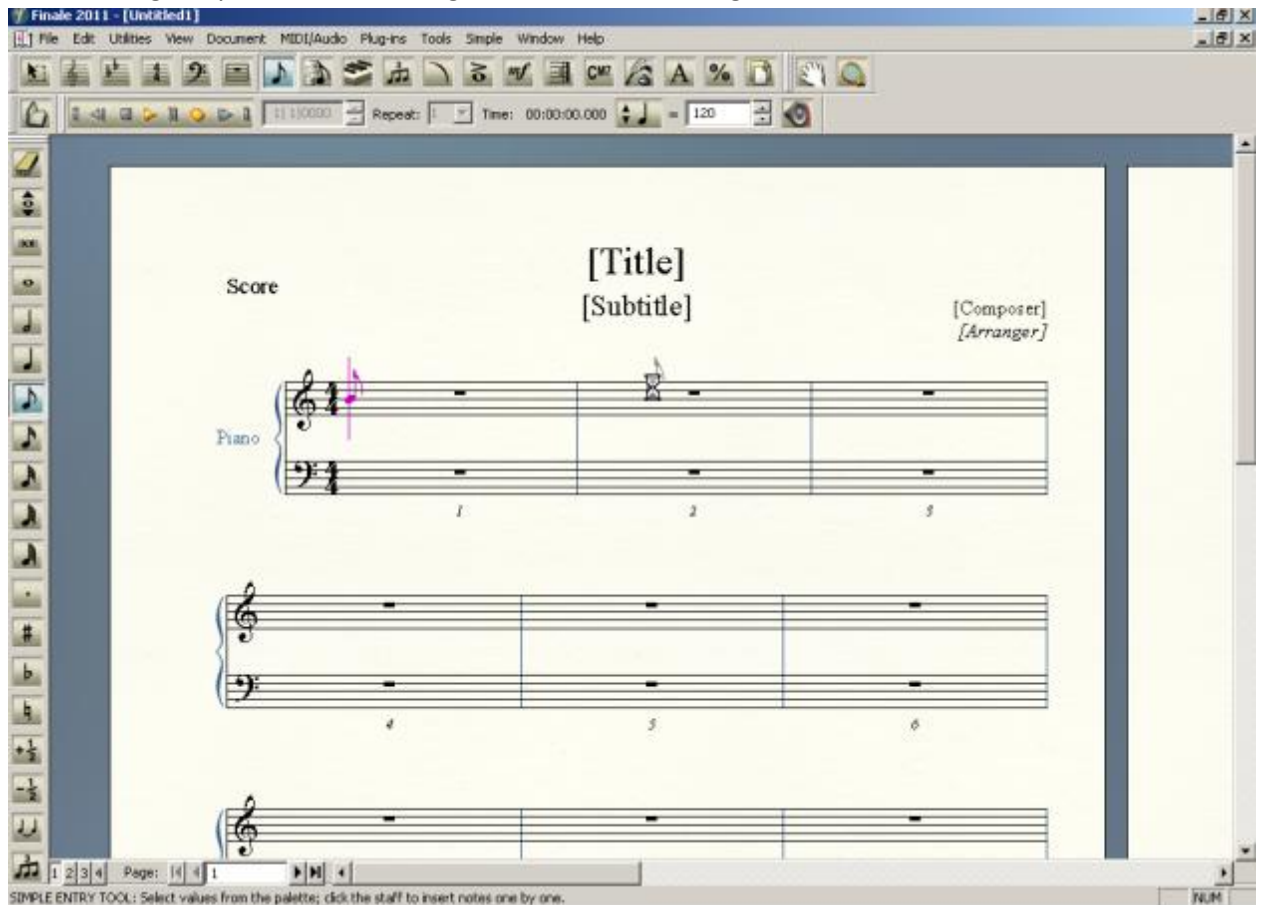


5. The next screen that comes up will look like one below. On this screen for the MIDI In you need to have the **ProKeys Sono 88** selected. And for the MIDI Out you need to have the **ProKeys Sono 88 Voices** selected (So that the audio goes back out through the headphones connected to the piano controller box) with the Match On/Off radio button deselected, you may then click **OK**.

(Please note: I also so a computer that said USB Audio device, and did not say ProKeys, so I select it and it worked it may be caused by a different driver, etc.)



6. After clicking Ok, you should be brought back to the following screen:



7. At this point you should be able to use the Electric Keyboard to put music onto the on screen music sheets, and while typing it you should head it through the head phones, and if you click play to listen to the music that was keyed in you should also be able to hear that out of the

piano headphones.

