

# SAYRE AREA SCHOOL DISTRICT TECHNOLOGY TIPS

## TABLES AND BACKGROUNDS

### USING TABLES AND BACKGROUNDS FOR THE SASD WEB SITE

#### Purpose

By utilizing tables the SASD Web pages will automatically adjust for various screen sizes and a background image will fit the size of each web page. For example:

On a large monitor – the text may look like the following:

The background image floats between the top navigator and the bottom footer

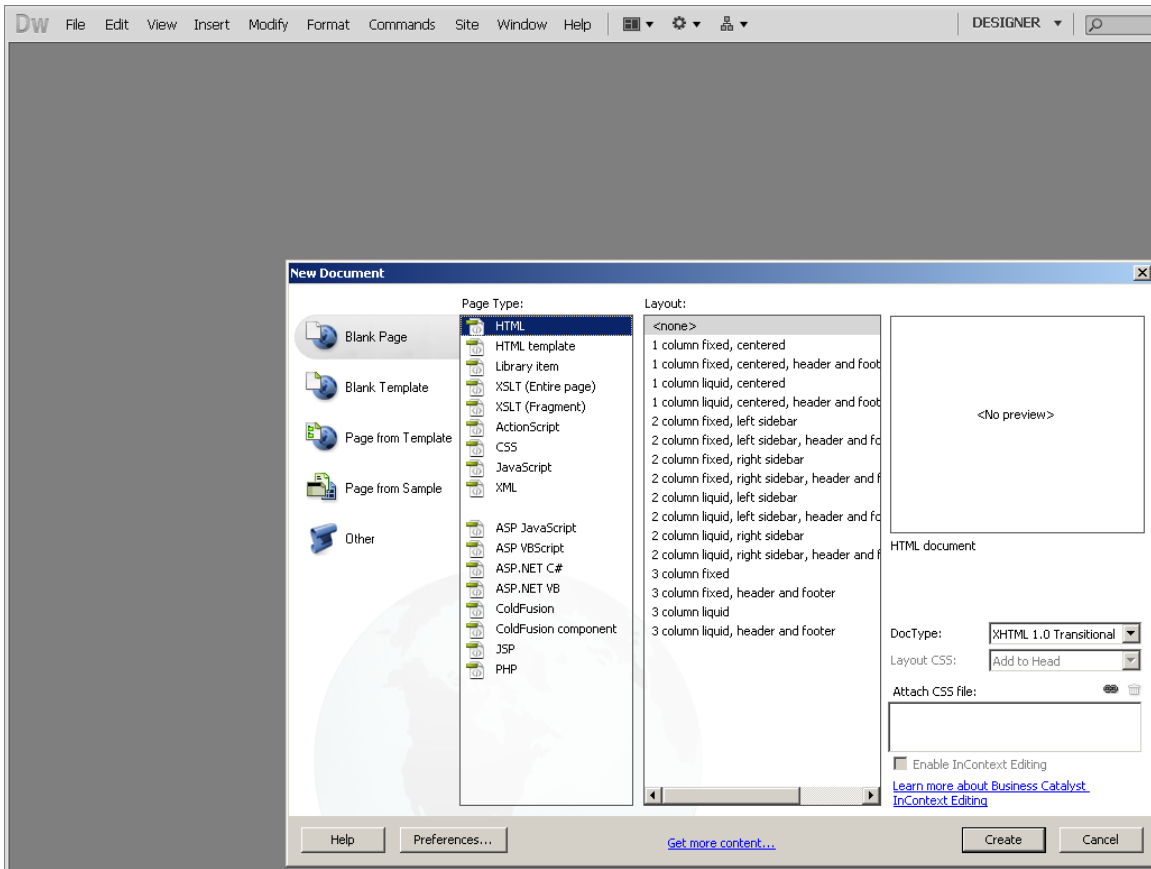


On a smaller monitor, the text may look like the following:

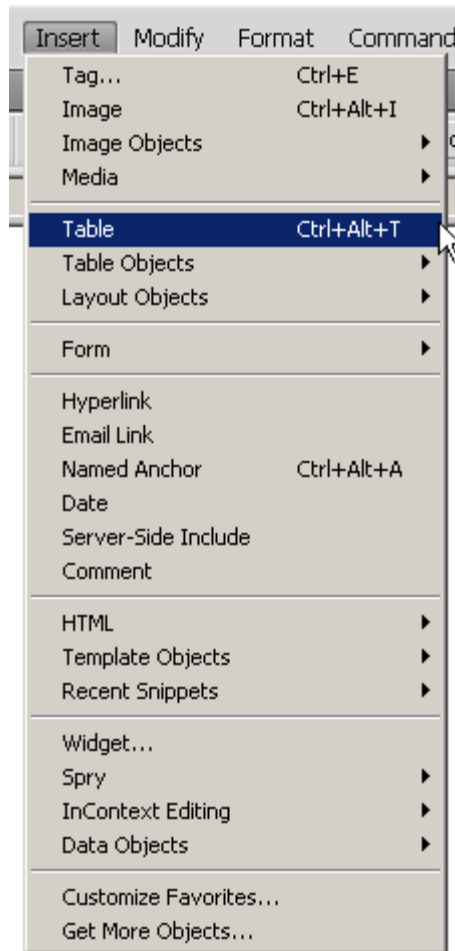


**First create a web page template that consists of tables**

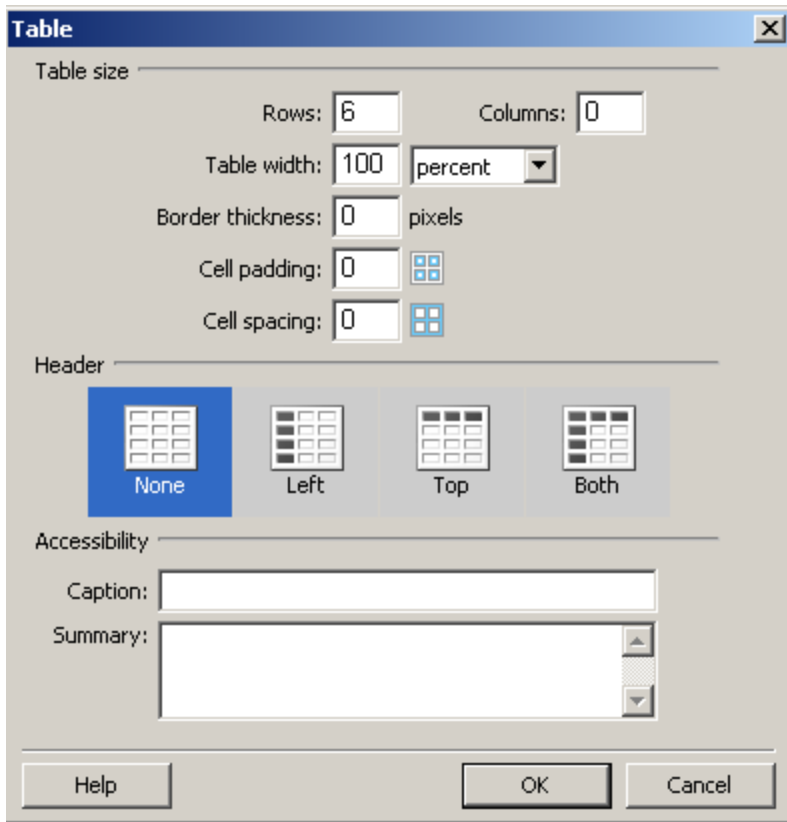
First you need to create new basic html page in Dreamweaver



Create



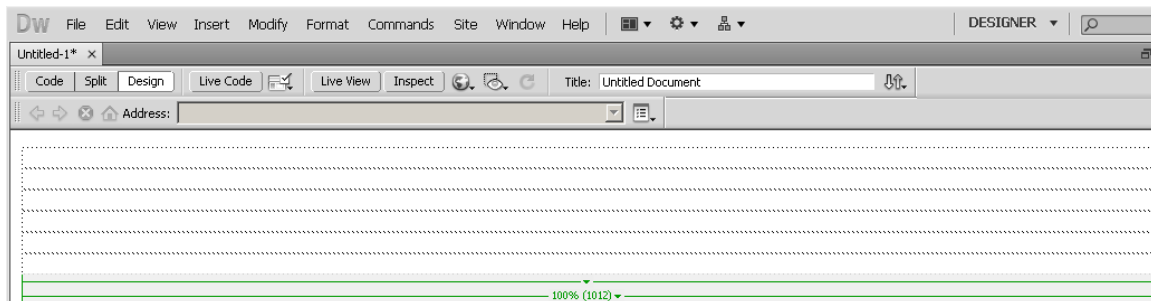
Next click on the create a Table button



You will have a list of options come up on your screen you will need to change the following:

You will need to set everything to 0 this includes: Columns, Border Thickness, Cell padding, and Cell Spacing. The table width needs to be set to 100% (percent) and Rows needs to be set to 6

If is all done correct your screen should be to this point



## Creating the background image for the table

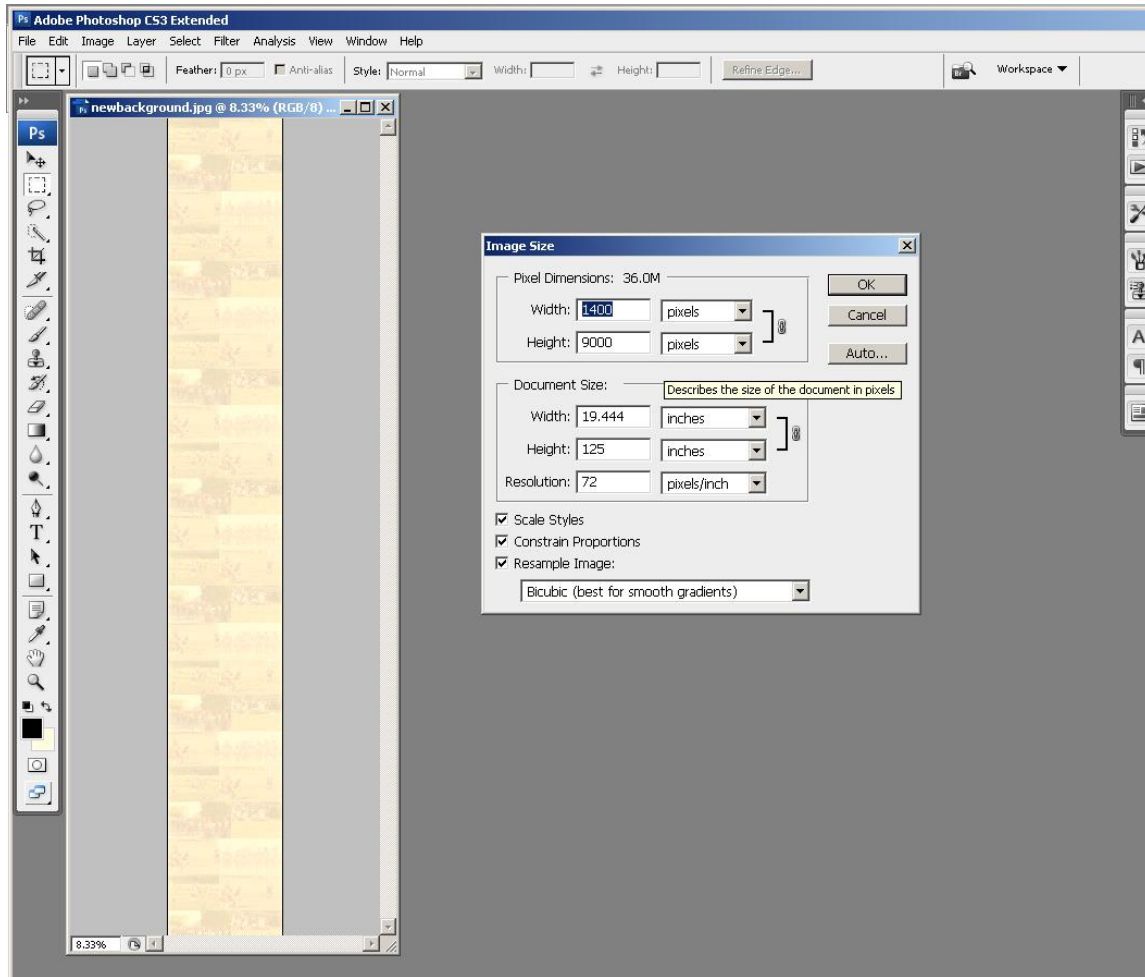
First you will need to open up Photoshop document and create the desired image.



Many times we had multiple images and merged the layer into 1 layer.

Your final image size will vary depending on the amount of content on the page and the size of the page, and how you want it to display.

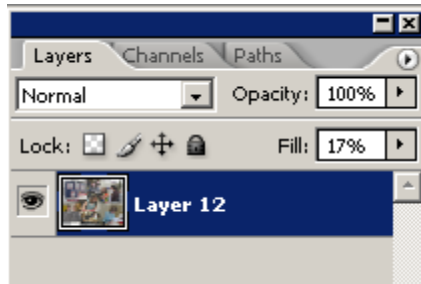
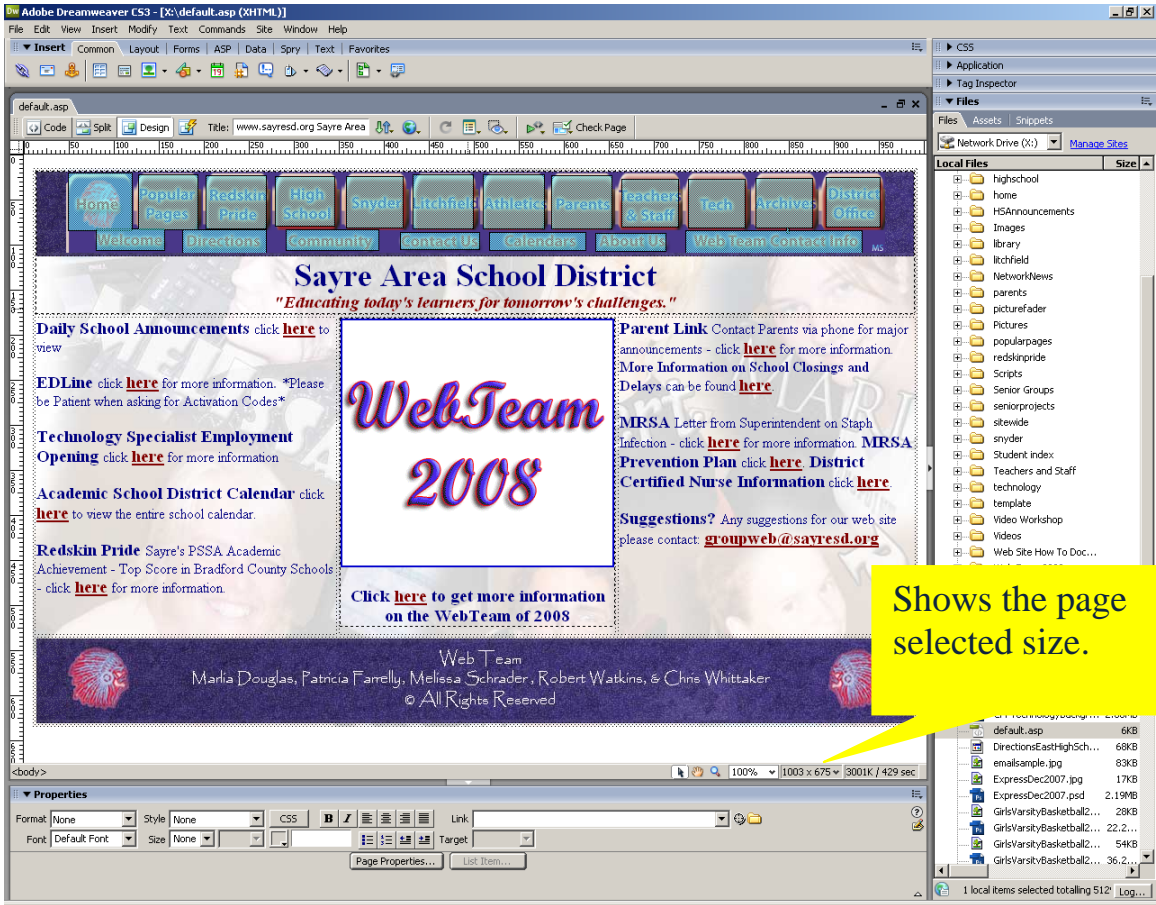
For example, the background image that you see below is: 1400 Pixels Width, and 9000 Pixels Height. This image size might be used for a page with more content such as the Redskin Pride page.



Your final image size will vary depending on the amount of content on the page and the size of the page, and how you want it to display.

For example, the background image that you show below is:1003 Pixels Width, and 675 Pixels Height. This image size might be used for a page with more content such as the SASD Home Page.

Not having extra space and excessive file sizes in backgrounds for pages will cause the pages to load faster on all speed connections.



Lastly – we need to set the fill to  
This allows the image to be seen without being overwhelming.