

SAYRE AREA SCHOOL DISTRICT TECHNOLOGY TIPS

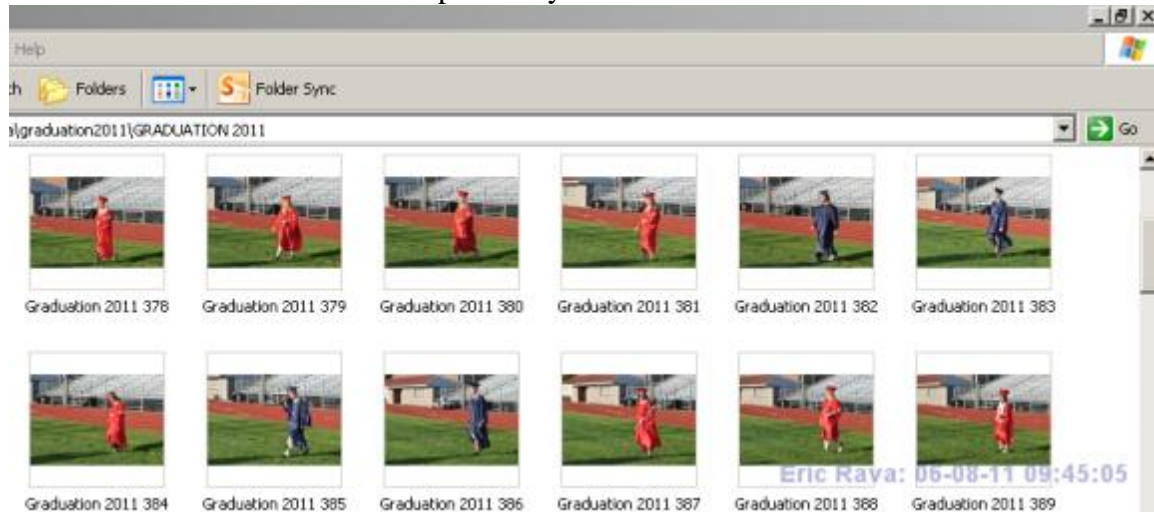
CS5 AUTOMATED IMAGE PROCESSOR

Purpose

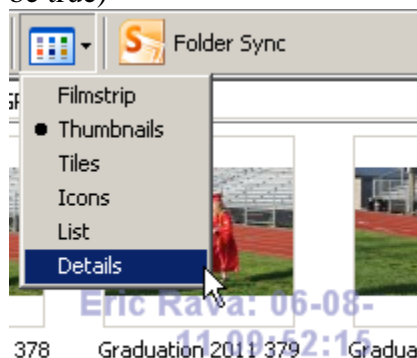
To shrink the size and quality of multiple images for website deployment

Procedure

Go to the folder that contains the pictures you would like to shrink



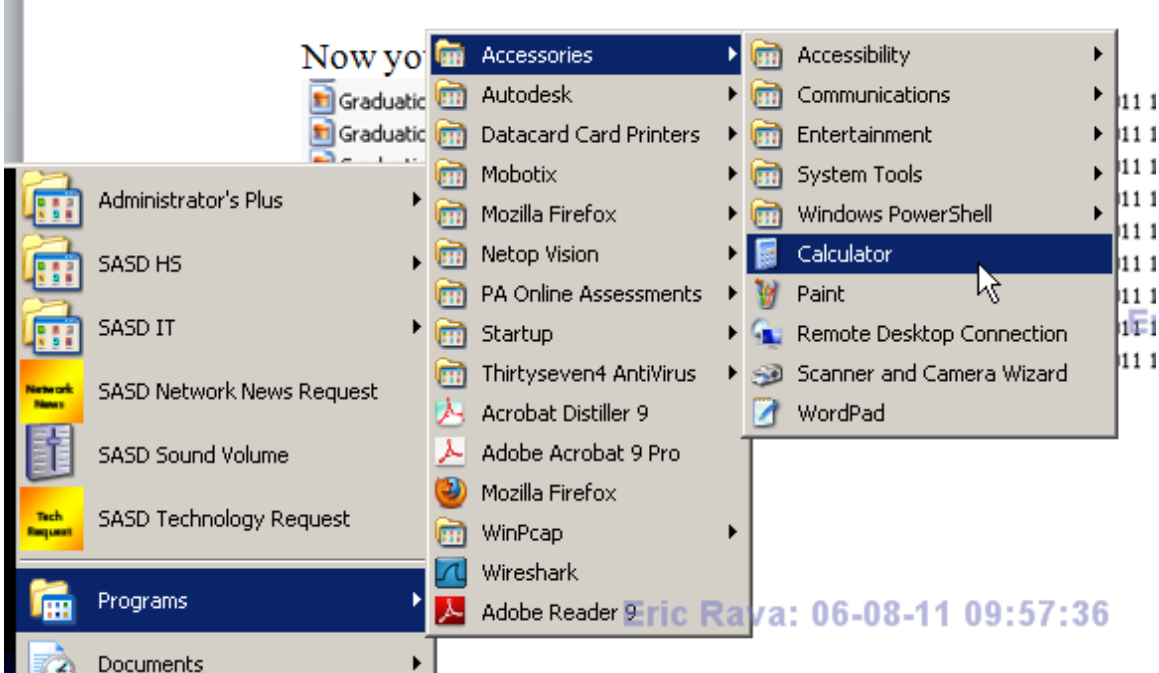
Click on the views button and select details (please note that all the pictures need to be the same dimensions, if you used the same camera for all the pictures most likely this will be true)



Now you should be able to see the dimensions

Graduation 2011 005	2,445 KB	JPEG Image	6/4/2011 10:30 AM	5/6/2011 9:38 AM	3872 x 2592
Graduation 2011 006	2,434 KB	JPEG Image	6/4/2011 10:30 AM	5/6/2011 9:38 AM	3872 x 2592
Graduation 2011 007	2,561 KB	JPEG Image	6/4/2011 10:30 AM	5/6/2011 9:39 AM	3872 x 2592
Graduation 2011 008	2,484 KB	JPEG Image	6/4/2011 10:30 AM	5/6/2011 9:39 AM	3872 x 2592
Graduation 2011 009	2,418 KB	JPEG Image	6/4/2011 10:30 AM	5/6/2011 10:17 AM	3872 x 2592
Graduation 2011 372	2,398 KB	JPEG Image	6/4/2011 10:27 AM	5/5/2011 6:55 PM	3872 x 2592
Graduation 2011 373	2,382 KB	JPEG Image	6/4/2011 10:27 AM	5/5/2011 6:55 PM	3872 x 2592
Graduation 2011 374	2,376 KB	JPEG Image	6/4/2011 10:27 AM	5/5/2011 6:55 PM	3872 x 2592
Graduation 2011 375	2,351 KB	JPEG Image	6/4/2011 10:27 AM	5/5/2011 6:55 PM	3872 x 2592

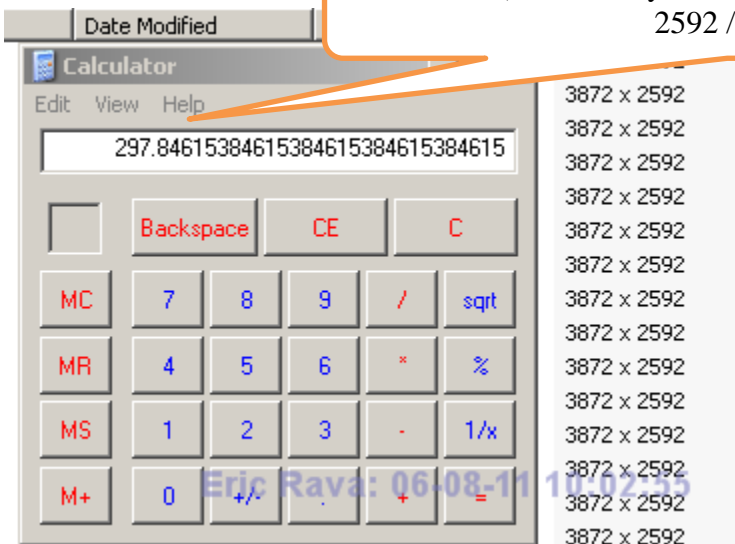
Open up the calculator



Take the Dimensions from one of the pictures and divide it by a number that reduces the image to the dimensions that you would like the images to be at (see example below)

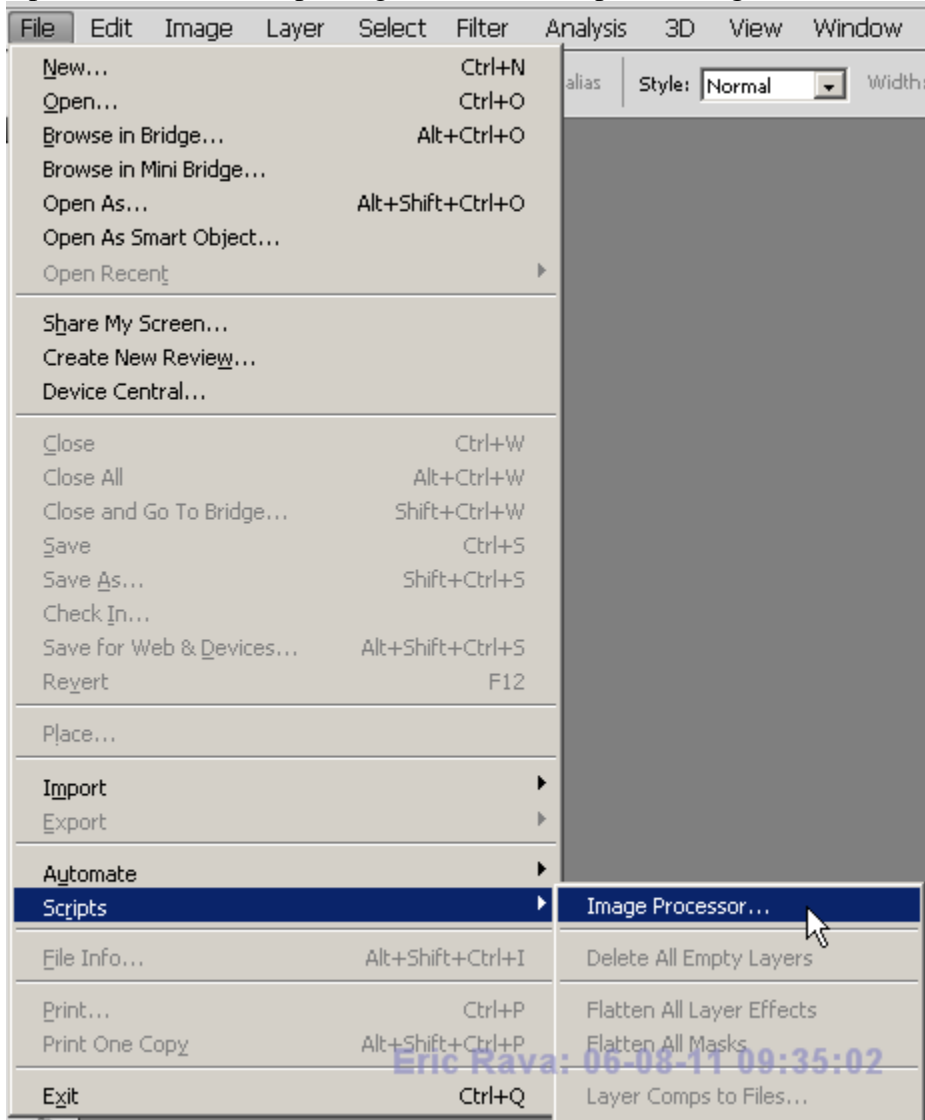
$$3872 / 13 \text{ (make sure you divide by the same number)} = 298 \text{ (round)}$$

$$2592 / 13 = 199 \text{ (round)}$$

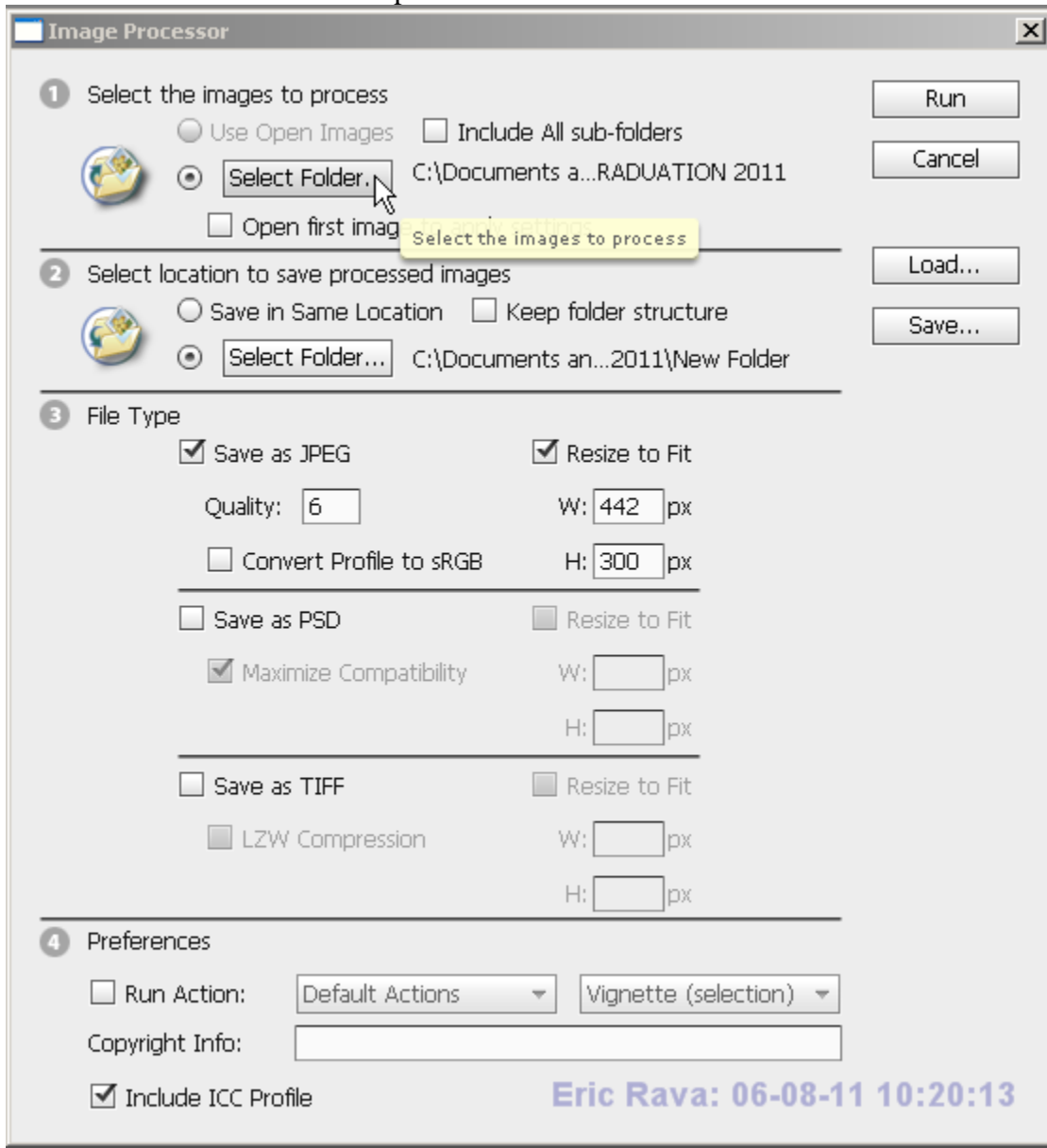


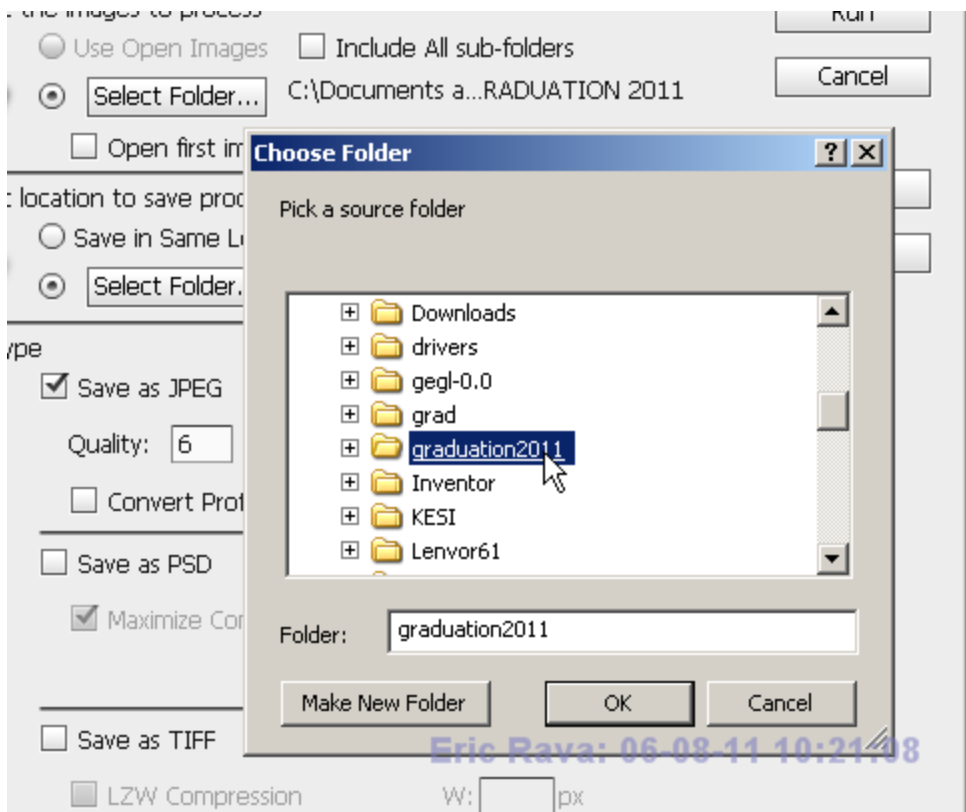
Open Adobe Photoshop and go to File → Scripts → Image Processor...

Open Adobe Photoshop and go to File → Scripts → Image Processor...

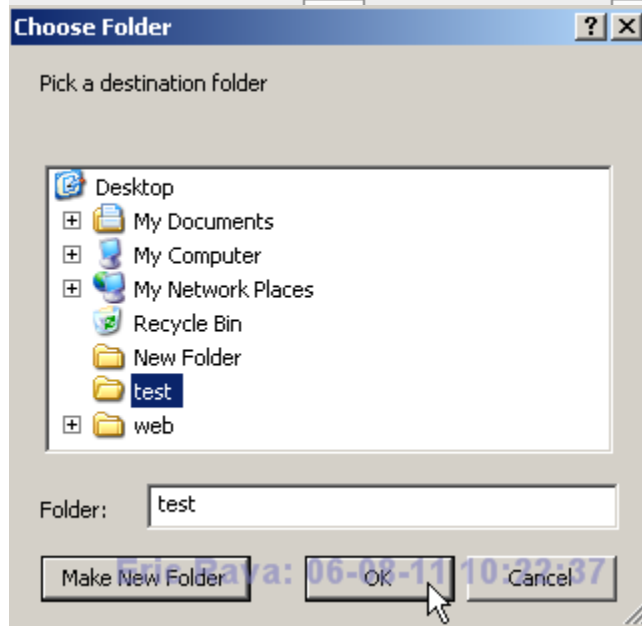
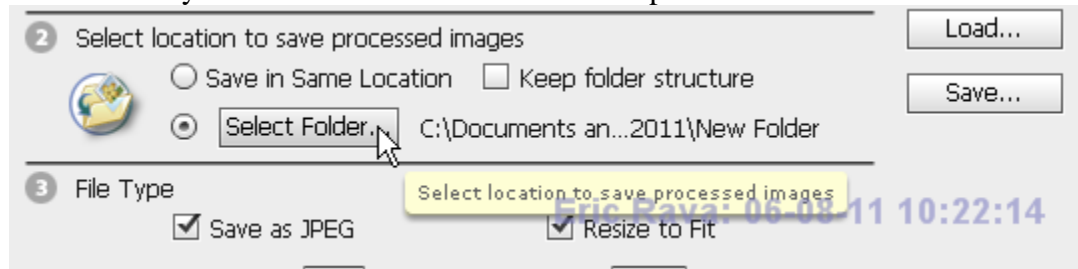


Select the folder that has all the pictures



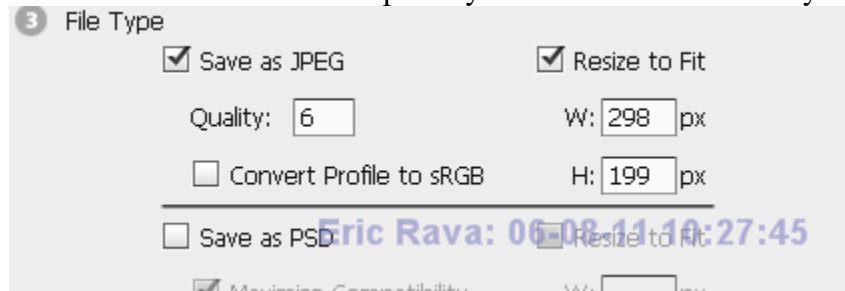


Select where you would like to save the modified pictures



Save as a JPEG with the Quality around 6. 1 (poor) 10 (perfect)

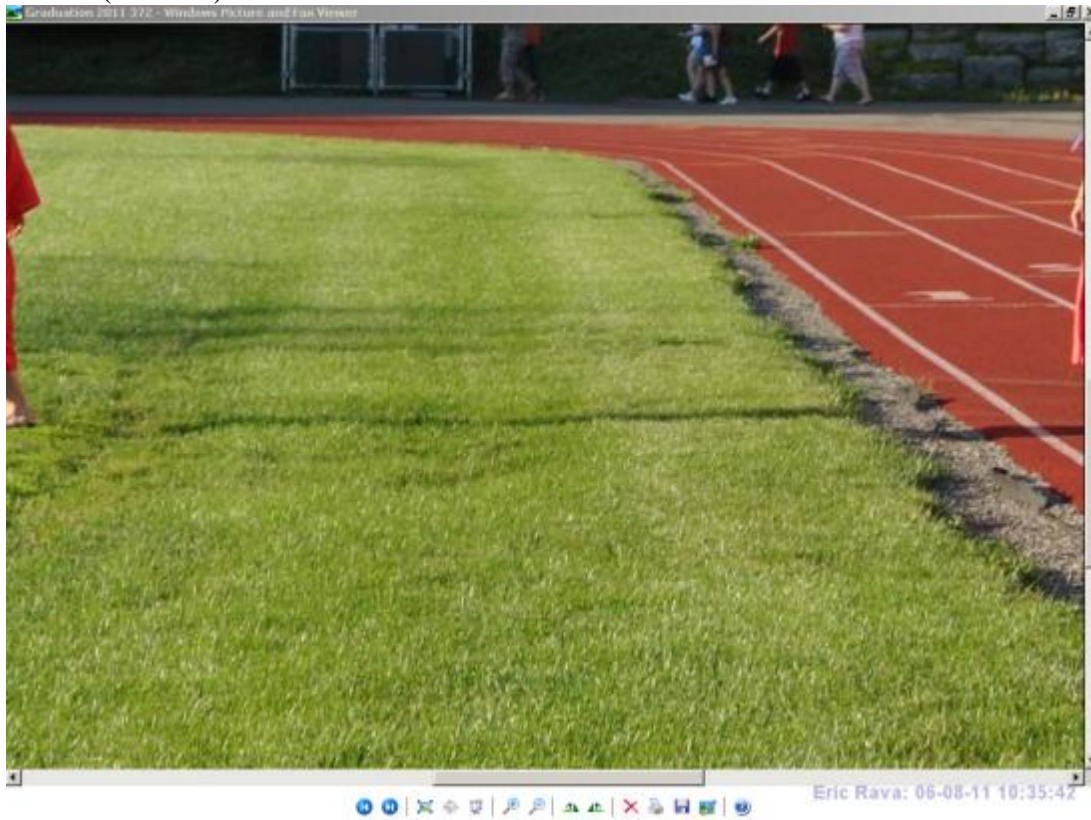
Check the Resize button and put in your new dimensions that you calculated.



Click Run (depending on how many pictures you have this may take a while)

Go to the folder that you saved your modified pictures to and you will see all of your pictures smaller and ready for the web (if the pictures look distorted please note that you probably mixed up the Height and Width or calculated wrong)

Before (full size):



After (full size):

