

SAYRE AREA SCHOOL DISTRICT TECHNOLOGY TIPS

SASD WIRELESS NETWORK ACCESS ON A CFF LENOVO LAPTOP

Purpose

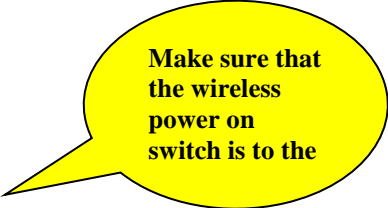
How to access the SASD Wireless Network on a CFF Lenovo Laptop

Go to a SASD Wireless Access Room

Go to a SASD High School Room with wireless access. *Please note that some of the adjacent rooms in the High School may have enough of a wireless connection to work.* The following rooms have full signal wireless access.

Name
HS118-Auditorium
HS230-McMahon
HS213-Shoemaker
HS211-Frantz
HS014-Thorton
HS151-Jennings
HS122-Sikora
HS124-Noldy
HS128-Selleck
HS113-May
HS159-Schwab
HS163-Salmon
HS157-Tracy
HS158-Ludwig
HS155-Krall
HS232-Maximiek
HS234-Felt
HS236-Pipher
HS229-Templeton
HS120-Cole
HS223-Hickey
HS156-Pettitt
HS153-Knolles
HS148-Cafeteria

Lenovo Wireless Switch Must Be On





1	IEEE 1394a port	2	Wireless On/Off Switch
3	headphone-out	4	microphone/SPDIF
5	Lid latch lock		

Logging Into the SASD Network via Wireless Access

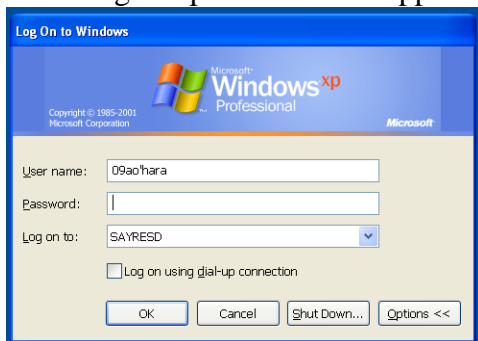
Please Note: In order to use the SASD wireless network → you must have a valid user account and you must use a SASD computer. Students and teachers may only access the Internet and their network resources once they have logged into the wireless network.

Wait until PC is fully booted



Log in

Hold the **CTRL** & **ALT** keys down and then press the **Delete** key on your keyboard – the following sample screen will appear:



Enter your username

For students – its your graduation year followed by your first initial plus your full last name – see the above example for Alice O'hara

Wait until you see the following screen

Welcome to the Sayre Area School District Network!

You have successfully logged on to the Sayre Area School District Network.

You may use any of the district's programs and you may change the URL above to go to a different web site.

New Computer Users

Go to <http://www.sayresd.org/technology/technologytips.asp> and then open up the documents in the "Getting Started Section"

Quick Access to Sayre's Web Site - just click here: <http://www.sayresd.org>

This Year's Web Team Consists of:

Alyssa Park 08apark@sayresd.org
Melissa Schrader 09mschrader@sayresd.org
Parm McConnell 08pmcconnell@sayresd.org
Heidi Croft 13hcroft@sayresd.org

If you have any information that you wish to place on the web site - please contact any of the above team members.

Power On - Please leave your computers on for Monday, Tuesday, Wednesday, Thursday (just log off - system updates will be performed after hours).

Power Off - Please power off your computers on Fridays only

You know you are all set when you see the above screen