

How to open up SASD in Dreamweaver

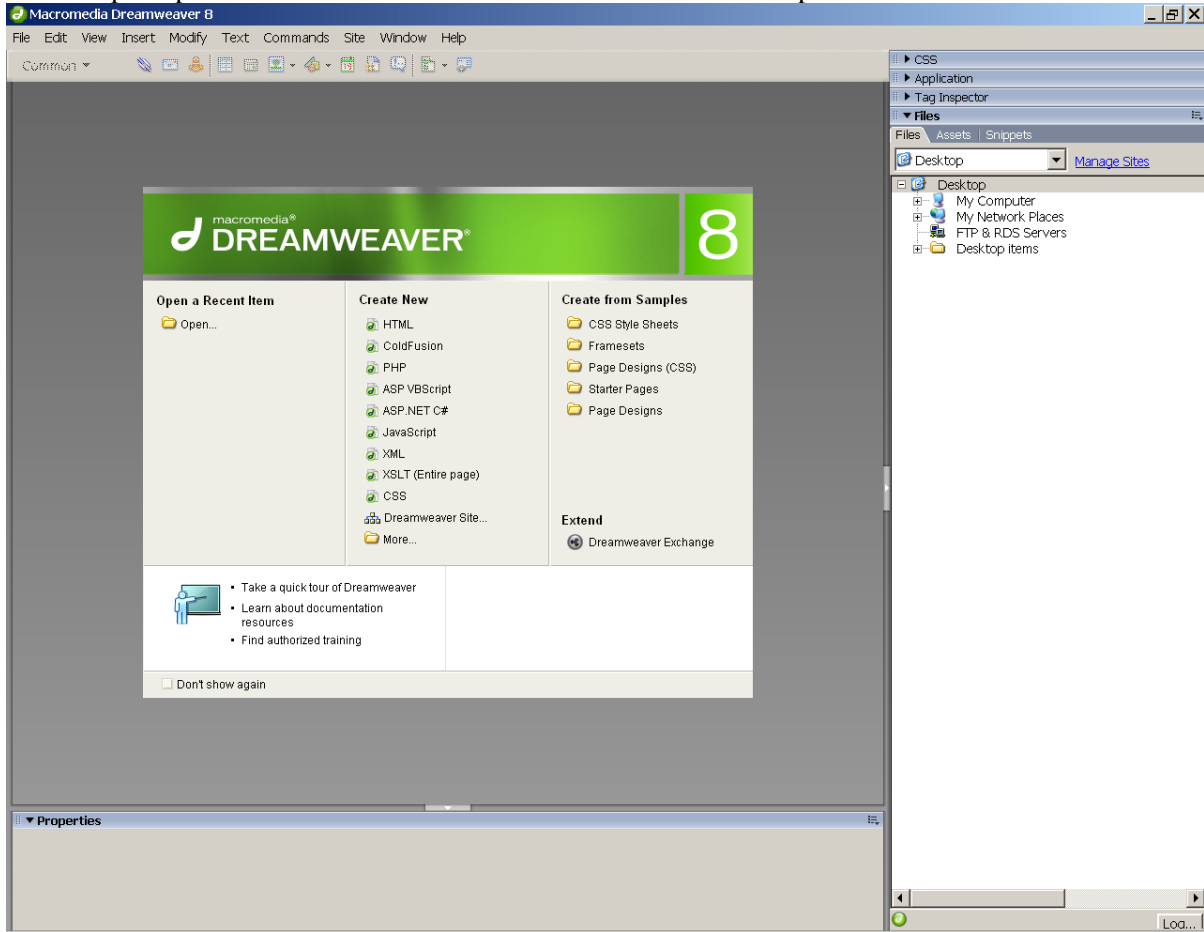
Author

William Vogel

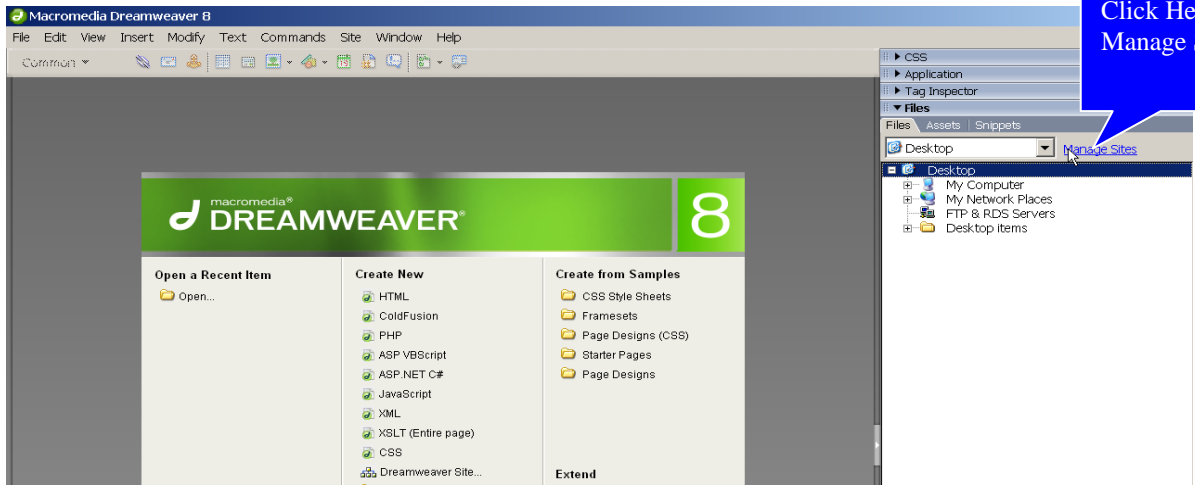
Purpose

This document will help you upload the SASD website to Dreamweaver so that it can be edited.

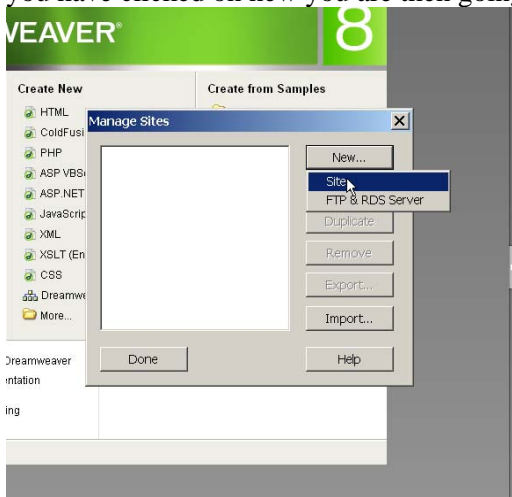
1. First open up Dreamweaver so that it's to the main welcome setup.



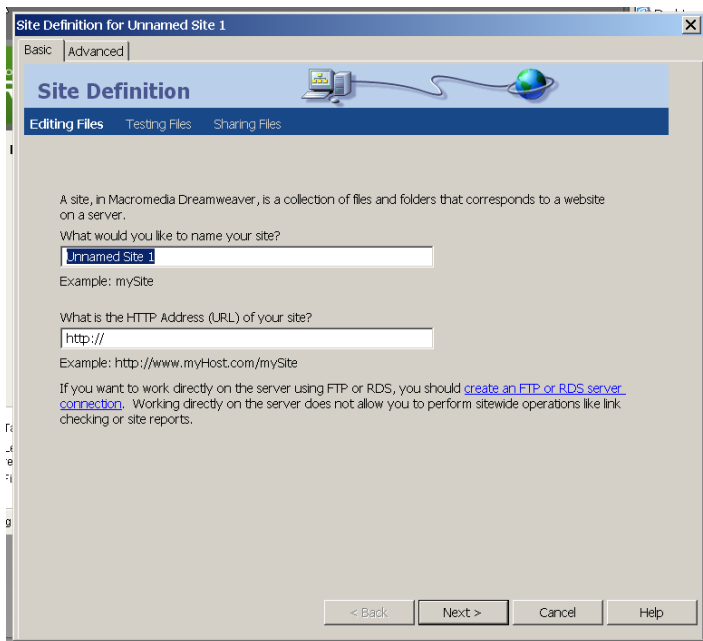
2. Next up next to where it says desktop you are going to click on manage sites.



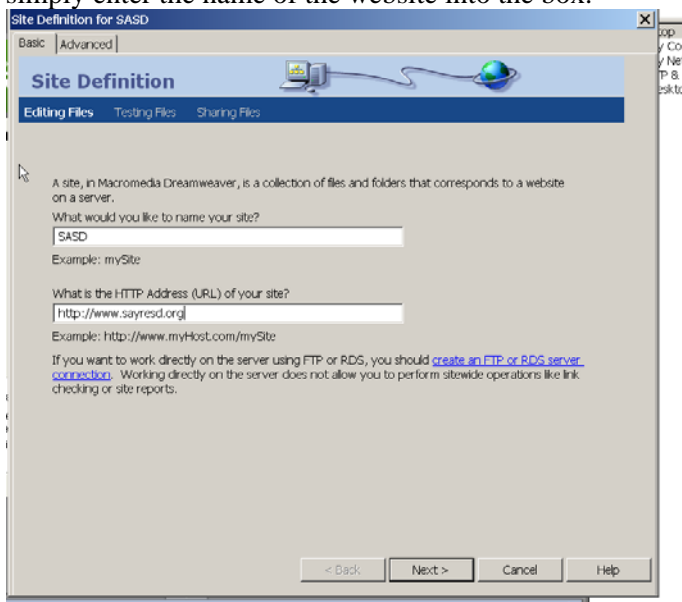
3. Once you have done this a screen will come up asking you whether you'd like to create a new one by clicking on new or by importing one. In this case we are going to choose to make a new one. Once you have clicked on new you are then going to choose Site.



4. At this stage your screen should bring up the Site Definition setup.

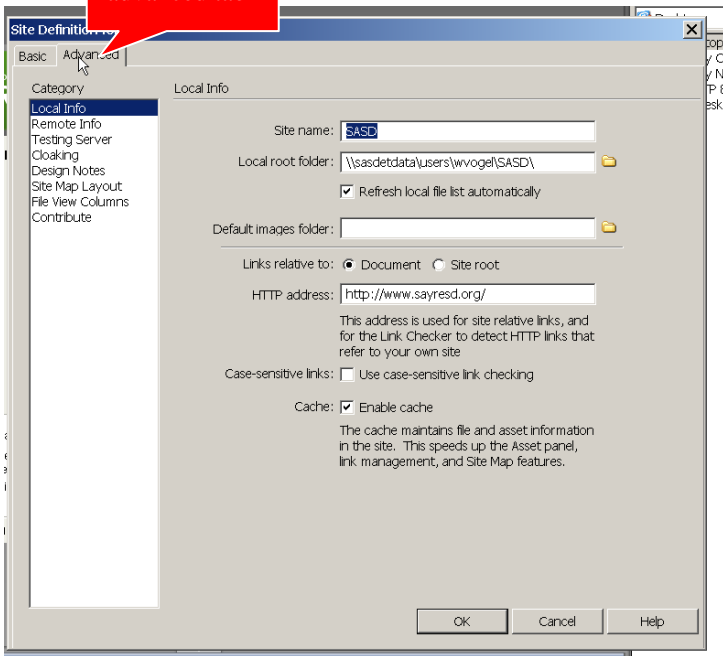


5. Once this is brought up where it asks you “What would you like to name your site?” We are going to call it **SASD**. Now where it says “What is the HTTP Address (URL) of your site?” we are going to simply enter the name of the website into the box.

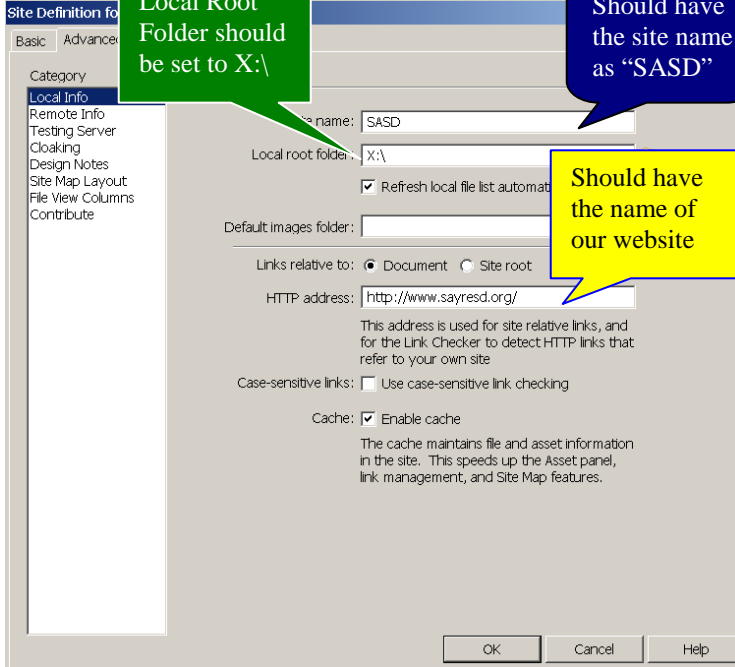


6 Then Click on the next button on the bottom of this section. Once you have done this you will go up and click on the advanced tab.

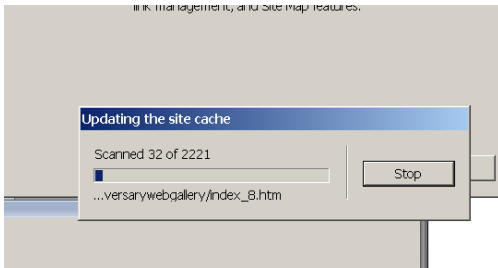
Click here on to the advanced tab



7. Once you click on the Advanced tab you will want to make sure the following information is the correct.

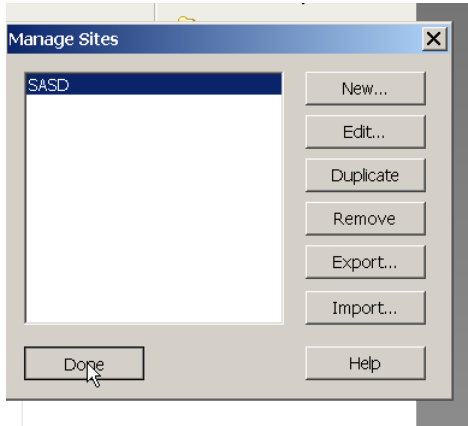


8. Once all this is done you then want to press OK. Which should start a screen that says Updating the Site Cache.



9. Once this is done you will be brought back to the original manage sites section where you will

click DONE.



10. When this is done you should be able to see the files of the website in the right hand side of the screen.

